



FINISHING BRANDS 2.8 GALLON PAINT TANKS



PART NUMBERS AND SCHEMATICS GUIDE

Company Profile

Allredi was formed in the early 2020, when two of the largest distributors in the blasting, coating, safety, and environmental industry, APE Companies and Marco Group International, joined forces. While the qualities both companies are known for have not changed, a lot about our business is new. New abilities. New agilities. New ways to help you win. This calls for a new name, Allredi.

This name exemplifies what we have become. It is completely oriented to the needs of our customers. To your needs. It says that when you call us for anything – products, service, expert advice, anything – you can consider it done. Or even better, Allredi done.

We are your right-now supplier. From skills to SKUs, we deliver the goods fast. So you can be more agile every minute, every day. This is who we are. This is what our new name means. Go ahead and expect excellence, because we're bringing it.

Our Mission and Vision

To be the industry's preferred partner in surface preparation solutions through unrivaled technical expertise, customer experience, product availability, and tailored service offerings.

The Allredi Difference

- **Industry Experience** – With Allredi on your team, you have access to expertise which can only come from decades of industry leadership. We have organized our engineering department, production specialists, customer operations, and safety support into a "Center of Competence." As an Allredi customer, you have access to hundreds of years of cumulative experience related to your operations.
- **Manufacturing Excellence** – Allredi is a U.S. based manufacturer of equipment for the Surface Preparation and Protective Coatings industries. Allredi's engineers benchmark the industry to ensure that we design and manufacture superior products that set the "Gold Standard" for performance, safety, and quality.
- **Legendary Customer Service** – Allredi's legendary customer service team is staffed by friendly, highly-trained individuals who are focused on providing the highest level of product support, order accuracy, and customer satisfaction.
- **Product Availability** – We stock over 10,000 SKU's and have over 45 shipping locations to serve North American and International markets for all major brands of blasting, coating, environmental, and safety equipment. Allredi is your right-now supplier, so you can keep your projects moving. From our foundation of strong relationships, we have built a nationwide network that puts vast inventory and ready service close to our customers. We provide advanced expertise, and we deliver the goods fast – so you can easily access the products and services you need to me more agile every minute, every day.
- **Technology Leadership** – Our website provides: Operator's Manuals, Part Numbers and Schematics Guides, SDS information, and key product features and specifications, providing access to information 24/7.

TABLE OF CONTENTS

Company Profile	2
Table of Contents	3
Finishing Brands 2.8 Gallon Paint Tanks	4-9
Part Numbers	4
Optional Accessories	5
Tank Part Numbers and Schematics	6-7
Regulator Part Numbers and Schematics	8-9
Maintenance Notes	10-11

PART NUMBERS AND SCHEMATICS GUIDE



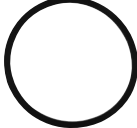
Part Numbers


FINISHING BRANDS 2.8 GALLON PAINT TANKS 0-80 PSI						
Part Numbers	Zinc Plated Lid & Shell	Stainless Steel Lid & Zinc Plated Shell	Single Regulator (0-100 psi Fluid Pressure)	Dual Regulator (0-100 psi Fluid & 0-60 psi Air Pressure)	Direct Drive Agitation	Internal Volume (Gallon)
20BK83C210	X		X			2.8
20BK83C211	X		X		X	2.8
20BK83C220	X			X		2.8
20BK83C221	X			X	X	2.8
20BK83Z210		X	X			2.8
20BK83Z211		X	X		X	2.8
20BK83Z220		X		X		2.8
20BK83Z221		X		X	X	2.8

FINISHING BRANDS 2.8 GALLON PAINT TANKS 0-80 PSI – CAPACITY, DIMENSIONS, AND SHIPPING WEIGHTS

Inside Diameter	9-1/2"
Inside Height at Center	9-1/2"
Overall Height	20-1/2"
Overall Width	13-3/8"
Estimated Shipping Weight (Without Agitators)	31 lbs.
Estimated Shipping Weight (With Agitators)	38 lbs.

OPTIONAL ACCESSORIES

	Part Numbers	HEAD GASKET
	20DPT331	One Each

	Part Numbers	DISPOSABLE TANK LINERS
	20BKPT78K10B	One Each
	20BKPT78K10	Package of 10
	20BKPT78K60	Package of 60

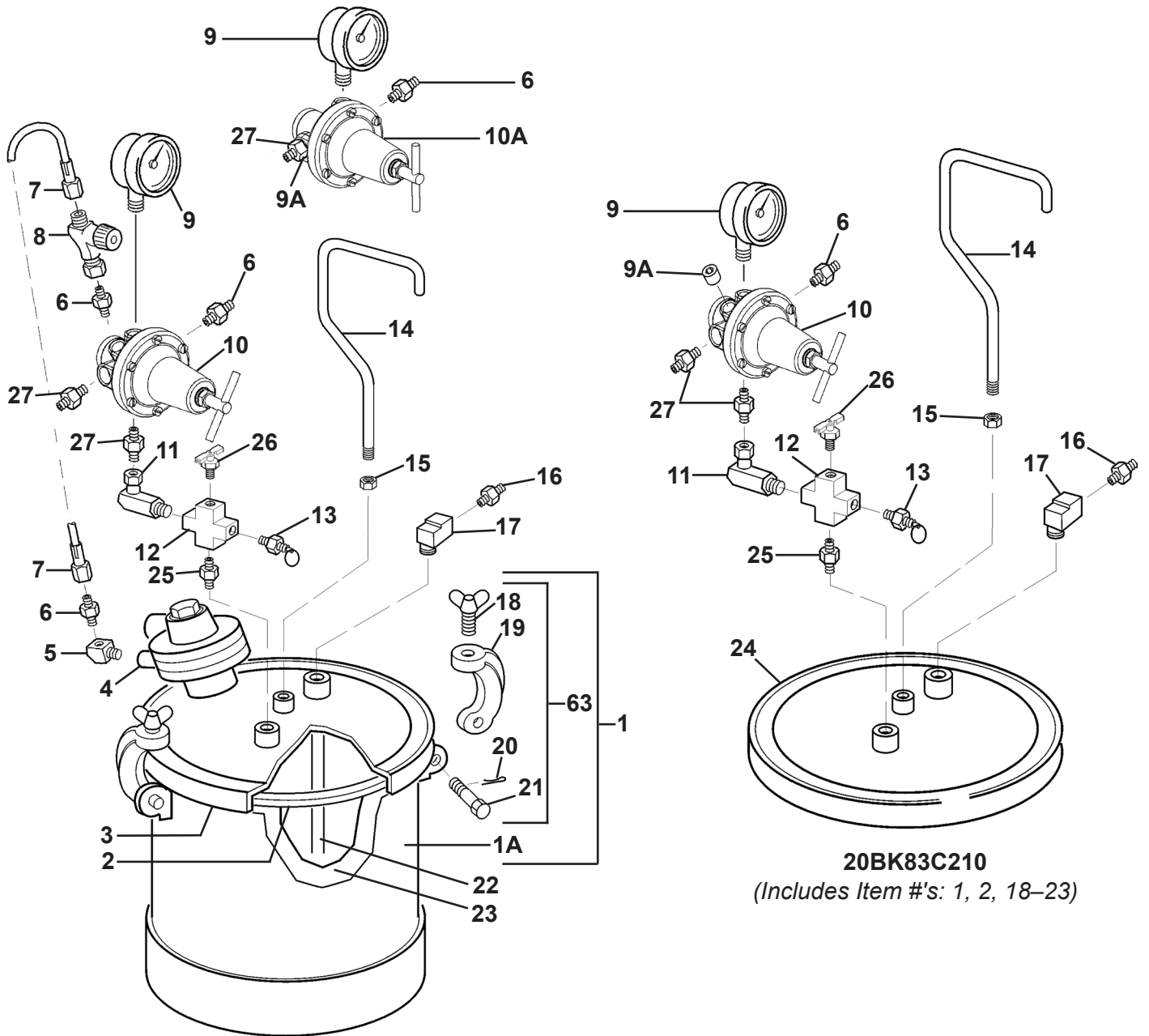
PART NUMBERS AND SCHEMATICS GUIDE

Finishing Brands 2.8 Gallon Paint Tank

Item #	Part #	Description
Fig. 1		
1	20BKPT423	Tank Assembly <i>(Includes Item #'s: 1A, 18, 19, 20, and 21)</i>
1A	20BKPT420	Tank Shell
2	20DPT331	Lid Gasket, Santoprene
3	20BKPT425	Lid, Zinc Plated <i>for use with 83C Series Pots</i>
—	20BKPT421	Lid, Stainless Steel <i>for use with 83Z Series Pots</i>
4	20BKPT418	Air Motor/Adapter Assembly <i>for use with Zinc Plated Lids</i>
—	20BKPT427	Air Motor/Adapter Assembly <i>for use with Stainless Steel Plated Lids</i>
5	20PFHA25UG0404	1/4" NPT (F) x 1/4" NPT (M) Street Elbow
6	20DH2008	1/4" NPT (M) x 1/4" NPS (M) Nipple <i>(Two Required for 20BK83C210 & 20BK83C220, Three Required for 20BK83C211 & 20BK83C221)</i>
7	20BKHA57011	Hose Assembly
8	20DHAV500	1/4" NPS (F) x 1/4" NPS (M) Air Adjusting Valve
9	20BK832727	Gauge <i>(One Required for 20BK83C210 & 20BK83C211, Two Required for 20BK83C220 & 20BK83C221)</i>
9A	1012052	1/4" NPT(M) Pipe Plug
10	20BKHAR511	Fluid Regulator
10A	20BKHAR507	Air Regulator <i>(For 20BK83C220 & 20BK83C221)</i>
11	20DSSP30ZN	1/4" NPS (F) x 1/4" NPT (M) 90° Swivel Adapter
12	20DX2280404	Cross 1/4" NPT (F)
13	20DTIA5080	80 psi Safety Valve
14	20BKPT32	Handle
15	10101938	Hex Nut 3/8-16
16	20BKAD11	3/8" NPT (M) x 3/8" NPT (M) Stainless Steel Nipple <i>For Zinc Plated Lids</i>
—	20DSSP459	3/8" NPT (M) x 3/8" NPT (M) Stainless Steel Nipple <i>For Stainless Steel Plated Lids</i>
17	20DSSP1939	3/8" NPT (F) x 3/8" NPT (M) Stainless Steel Street Elbow
18	—	Thumb Screw
19	—	Yoke Assembly
20	—	Cotter Pin 3/32 x 1"
21	—	Hinge Pin
22	20DPT31	Galvanized Fluid Tube
23	20BKPT78K10B	Tank Liner <i>(One Each)</i>
—	20BKPT78K10	Tank Liner <i>(Quantity of 10)</i>
—	20BKPT78K60	Tank Liner <i>(Quantity of 60)</i>
24	20BKPT426	Zinc Plated Lid
—	20BKPT422	Stainless Steel Plated Lid
25	20BKSSP462ZN	1/4" NPT (M) Hex Nipple
26	20DSS2707	Air Relief Valve
27	20BK834233	DM Nipple <i>(Two Required for 20BK83C210 & 20BK83C211, Three Required for 20BK83C220 & 20BK83C221)</i>
63	20BKKK5057	Clamp, Pin & Screw Kit <i>(Includes Item #'s: 18, 19, 20, and 21)</i>
—	206M363	Part Numbers and Schematics Guide – Finishing Brands 2.8 Gallon Paint Tanks
—	209V002	Operator's Manual – Finishing Brands 2.8 Gallon Paint Tank - Zinc Plated Lid
—	209V001	Operator's Manual – Finishing Brands 2.8 Gallon Paint Tank - Stainless Steel Plated Lid

PART NUMBERS AND SCHEMATICS GUIDE

Figure 1: Finishing Brands 2.8 Gallon Paint Tank



20BK83C220 & 20BK83C221

20BK83C210
(Includes Item #'s: 1, 2, 18-23)

PART NUMBERS AND SCHEMATICS GUIDE

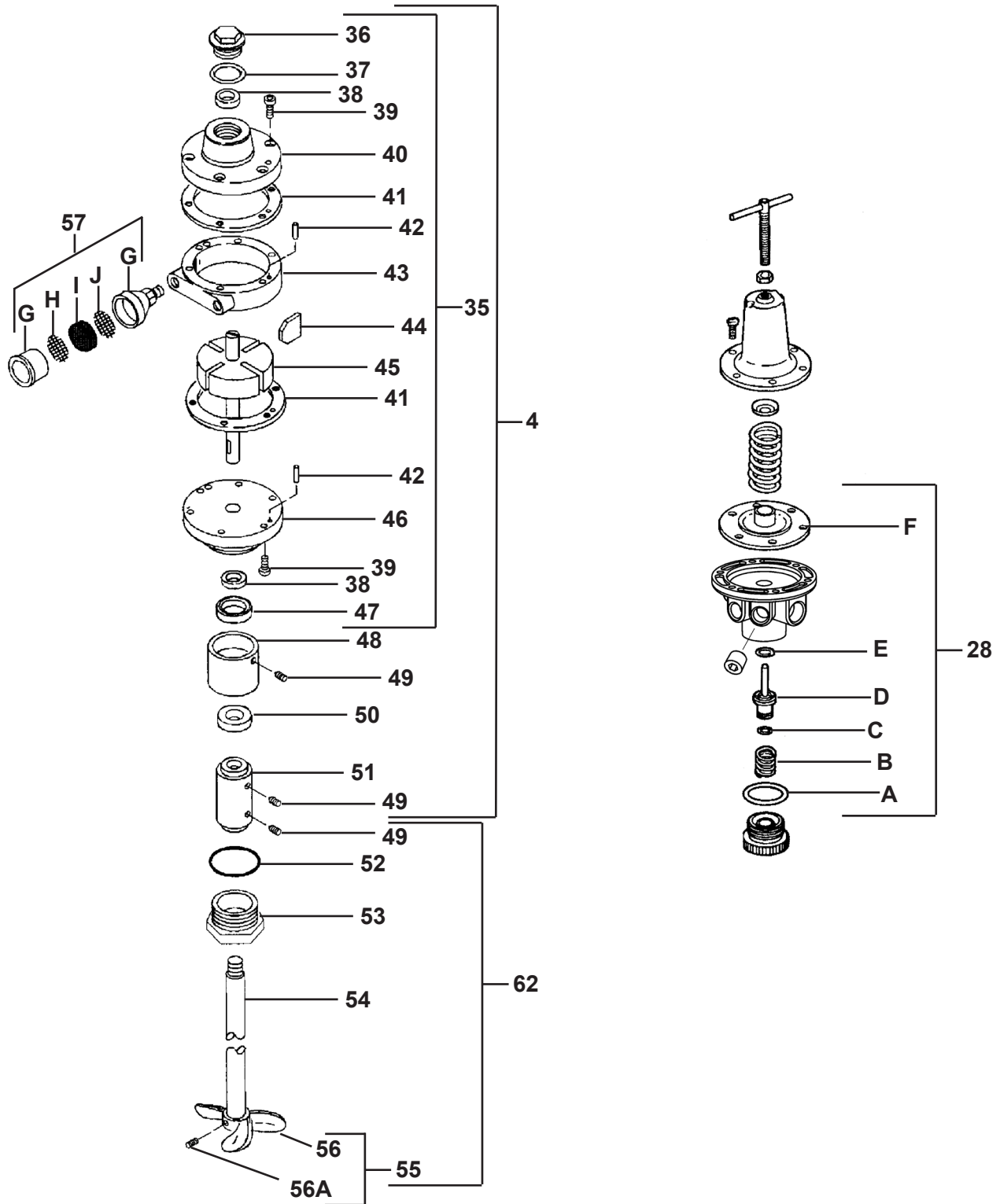
Finishing Brands 2.8 Gallon Paint Tank Regulators

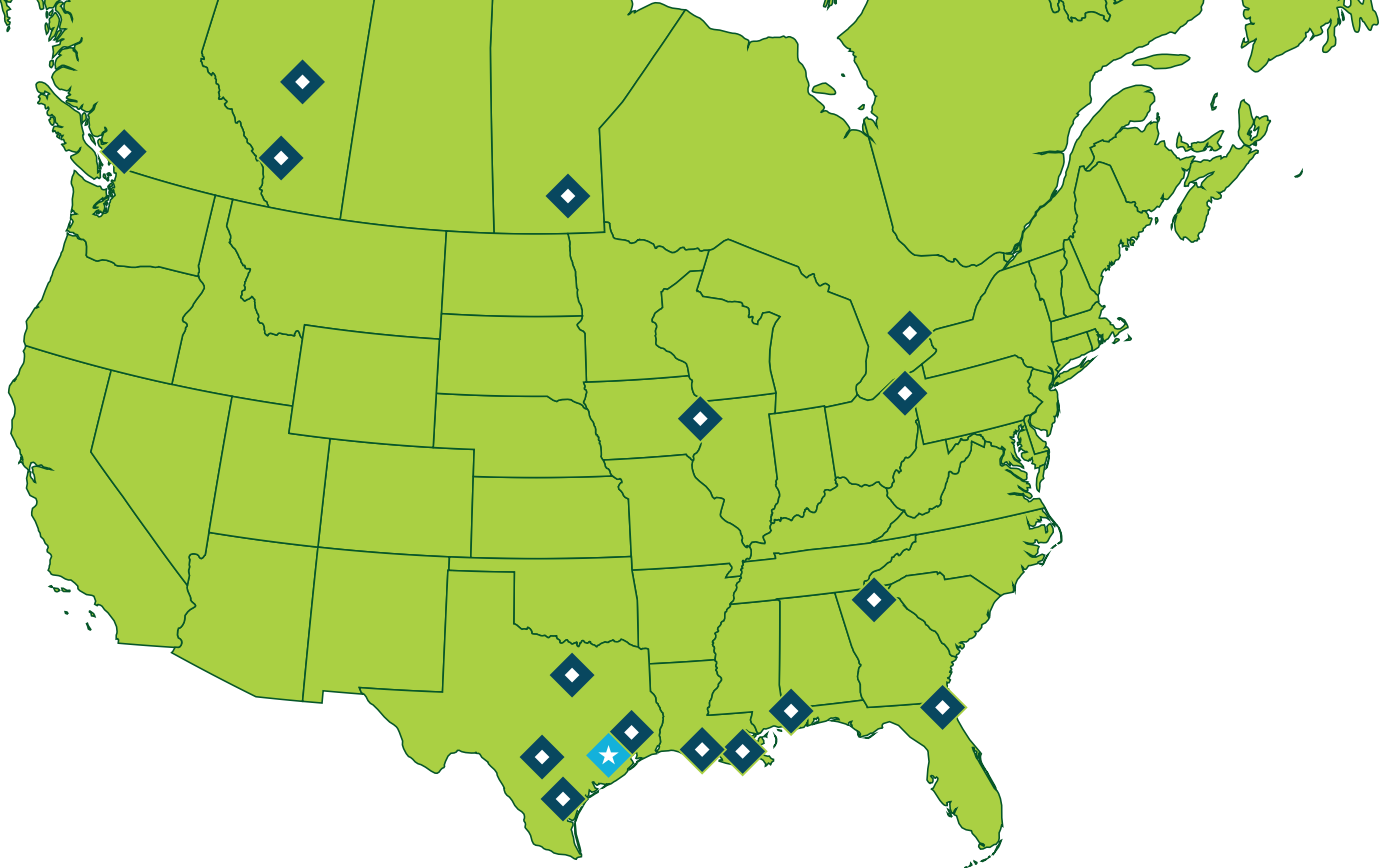
Item #	Part #	Description
Fig. 2		
4	20BKPT418	Air Motor/Adapter Assembly <i>(Includes Item #'s: 36–51)</i>
28	20DKK4977	Repair Kit <i>(Includes Items: A, B, C, D, E, and F)</i>
35	20DPT410	Air Motor Assembly <i>(Includes Item #'s: 36–47)</i> For use with Zinc Plated Lids
—	20BKQMS455	Air Motor Assembly <i>(Includes Item #'s: 36–47)</i> For use with Stainless Steel Plated Lids
36	20DQS190	End Cap
37	—	End Cap Gasket
38	20DPT58	Bearing
39	—	1/4-28 x 1/2" Screw
40	—	Front Plate
41	20BKPT591K10	End Plate Spacer
42	20DQS1891K10	Dowel Pin <i>(Quantity of 10)</i>
43	—	Body
44	—	Vane
45	—	Rotor Assembly
46	—	End Plate
47	20DPT3790	Shaft Seal
48	20DPT50	Air Motor Adapter
49	20100150	1/4-20 x 1/4" Screw
50	20DKK5041	Seal Assembly
51	20DQMG441	Shaft Coupling Kit <i>(Includes Item #49)</i> For use with Zinc Plated Lids
—	20DQMS453	Shaft Coupling Kit <i>(Includes Item #49)</i> For use with Stainless Steel Plated Lids
52	20DSSG8096K5	O-ring <i>(Quantity of Five)</i>
53	20BKPT70	Adapter Nut
54	20DQMG56	Shaft For use with Zinc Plated Lids
—	20DQMS73	Shaft For use with Stainless Steel Plated Lids
55	20DQMS448	Propeller Assembly <i>(Includes Item #'s: 56 and 56A)</i>
56	—	Propeller
56A	—	1/4-20 x 3/8" Stainless Steel Set Screw
57	20BK350401	Muffler Assembly <i>(Includes Items: G, H (Quantity of Two), I (Quantity of Four), and J)</i>
62	20BKPT428	Agitator Shaft Assembly For use with Zinc Plated Lids <i>(Includes Item #'s: 49, 52, 53, 54, and 55)</i>
—	20DPT419	Agitator Shaft Assembly For use with Stainless Steel Plated Lids <i>(Includes Item #'s: 49, 52, 53, 54, and 55)</i>
—	20DKK50011	Air Motor Repair Kit <i>(Includes Item #'s: 37, 41, 44, and 60)</i>
—	206M363	Part Numbers and Schematics Guide – Finishing Brands 2.8 Gallon Paint Tanks
—	209V002	Operator's Manual – Finishing Brands 2.8 Gallon Paint Tank - Zinc Plated Lid
—	209V001	Operator's Manual – Finishing Brands 2.8 Gallon Paint Tank - Stainless Steel Plated Lid

**Items A through J not available individually*

PART NUMBERS AND SCHEMATICS GUIDE

Figure 2: Finishing Brands 2.8 Gallon Paint Tank Regulators





ALLREDI THERE

Serving these industries: Bridge, Pipeline, Tank & Tower, Concrete Services, Rail, Shipyard & Marine, Pools & Fountains and Foundry

UNITED STATES

Pasadena, TX (*Headquarters*)
844.361.7038

Beaumont, TX
409.722.1284

Bristol, PA
215.826.8080

Corpus Christi, TX
361.887.2038

Davenport, IA
563.324.2519

Deer Park, TX
(*Service & Rental Location*)
281.930.0905

Duluth, GA
800.535.4564

Gonzales, LA
225.647.7575

Harvey, LA
504.367.8090

Houma, LA
985.580.4273

Jacksonville, FL
904.262.2120

Lafayette, LA
337.267.1440

Theodore, AL
251.338.7525

Youngstown, OH
330.448.6267

CANADA

Calgary, Alberta
403.279.1924

Coquitlam, BC
604.464.6979

Edmonton, Alberta
780.468.2588 (Manus)
780.425.5510 (Mod-U-Blast)

Hamilton, Ontario
905.527.6000 / 888.794.5665

Mississauga, Ontario
905.890.5837

Winnipeg, Manitoba
204.256.3324

800-252-7848 / WWW.ALLREDI-US.COM

Allredi™ and Marco® are registered trademarks of Allredi, LLC.
All other brand names or marks are used for identification purposes and are trademarks of their respective owners.

ALLREDI™

Literature #206M363_10/25/2022