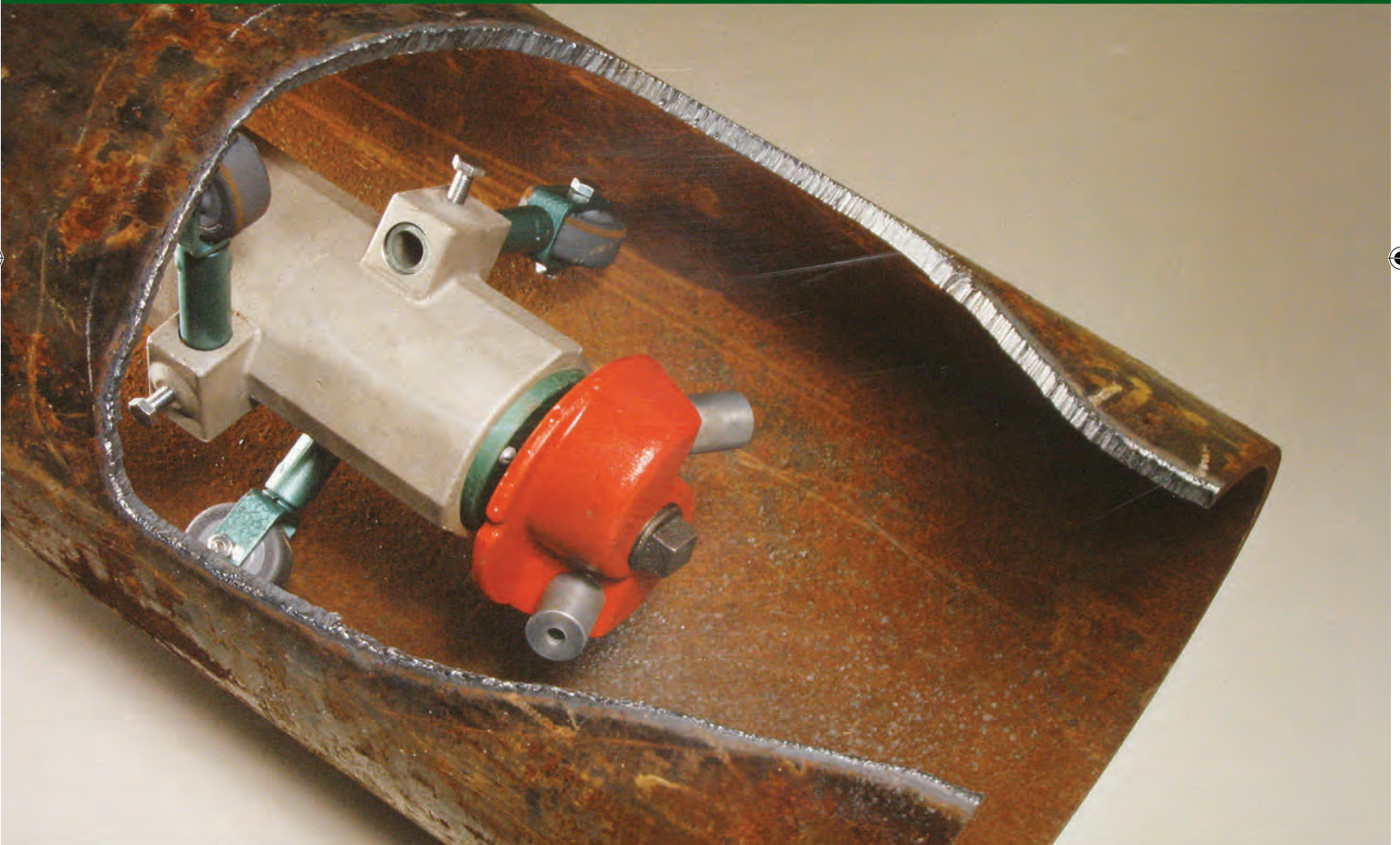


CLEMCO®

Pipe Tools

INTERNAL PIPE BLASTING

Precise, Efficient, Economical



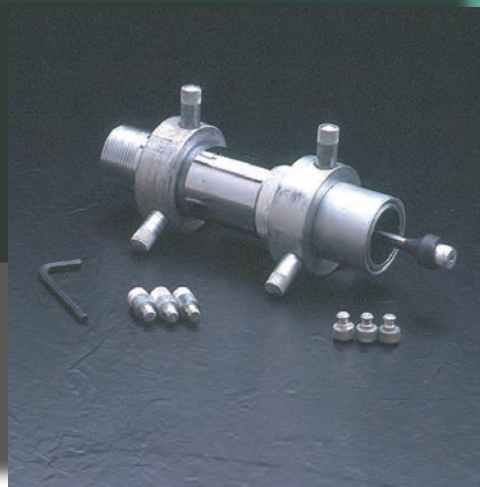
Clemco's reliable products, technical support and superb service has earned it a reputation for quality equipment and customer support spanning over six decades of service to industry

ISO 9001 CERTIFIED

INTERNAL PIPE BLASTING



Hollo-Blast Jr.
for pipes 3/4-inch to 2-inch ID
Four sets of centering collars accommodate pipes from 1-inch to 2-inch ID. Tool alone fits pipe of 3/4-inch ID



Hollo-Blast (with centering collar)
for pipes 2-inch to 5-inch ID
Hollo-Blast comes with a 1/2-inch short venturi nozzle and tungsten carbide deflection tip. A 5/8-inch nozzle is an option.



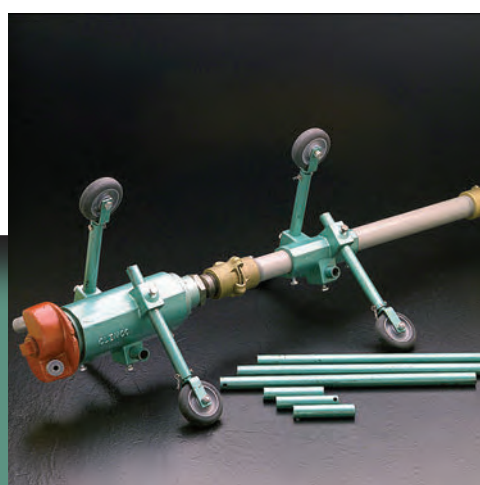
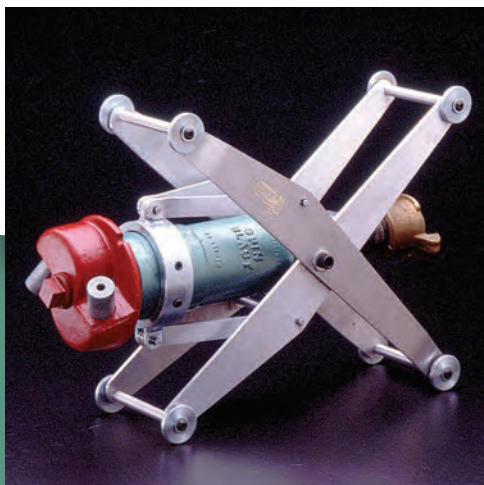
Hollo-Blast (with centering carriage)
for pipes 5-inch to 12-inch ID
A centering carriage fits the tool to the pipe ID (inside diameter).

Clemco Hollo-Blast Jr., Hollo-Blast and Spin-Blast for pipes 3/4-inch to 60-inch ID

Spin-Blast SB-836 with centering carriage for smaller ID pipes
The Spin-Blast cleans pipes at rates unobtainable by other means.

Spin-Blast SB-836
for pipes 8-inch to 36-inch ID
Spin-Blast comes in two model sizes: the SB-836 for pipes 8-inch to 36-inch ID with a nozzle head capable of holding two standard nozzles and three sets of leg extensions.

Spin-Blast 3660
for pipes 36-inch to 60-inch ID
The nozzles position on the head causes the head to rotate and propel abrasive to the pipe's interior surface



- **Clemco tools make pipe cleaning easier**
- **Suitable for pipe ID sizes from 3/4-inch to 60-inches**
- **Easy to set up**

Cleaning and Preventing Corrosion with Proper Surface Preparation

Clemco Pipe tools help get the job done faster, enhancing productivity and saving money in the process. Clemco tools are engineered for a wide range of pipe internal diameters and most abrasives. Each tool handles a specified pipe internal diameter range through the use of various centering devices

Easy to Set Up and Use

These pneumatic tools use compressed air, common abrasives, and standard blast machines. Coupled blast hose is attached to a customer-provided pipe lance, normally in a length that matches the pipe to be cleaned. The tool is placed at the far end of the pipe and drawn manually through the pipe at a speed determined to clean the pipe to the desired degree of cleanliness.



Pipe Pro XL™

For 16-inch to 60-inch ID Pipe

The Pipe Pro XL™ is a pneumatically-operated tool for cleaning pipe interior surfaces. It attaches to the blast hose in place of a standard nozzle. The Pipe Pro XL™ features an air driven motor, which controls the rotation of the blast head, where two identical nozzles are mounted. The 360° rotation of the blast head provides complete cleaning without rotating the pipe. Variable -speed head rotation means precise RPM adjustment so the degree of cleaning that the pipe surface requires can easily be achieved. The adjustable carriage with urethane wheels centers the tool within the pipe allowing smooth movement through the pipe.

- **All use a standard pressure blast machine**
- **No need to rotate pipe or tubing**
- **Fast, economical, efficient pipe cleaning**

INTERNAL PIPE BLASTING TOOLS

Ordering Information

Hollo-Blast Jr. (3/4" to 2" pipe ID)	Stock No.
Hollo-Blast Jr. w/centering collars and reducer.....	01098
Without reducer.....	01099
Centering collar set.....	01114

Hollo-Blast (2" to 12" pipe ID) with tungsten tip & sleeves	
Hollo-Blast, less carriage, with 1/2" nozzle.....	01076
Hollo-Blast, less carriage, with 5/8" nozzle.....	08446
with boron tip and sleeves	
Hollo-Blast, less carriage, with 1/2" nozzle.....	21190
Hollo-Blast, less carriage, with 5/8" nozzle.....	25725

Hollo-Blast Centering Carriages	
Hollo-Blast centering collar set (3" to 5").....	01124
Hollo-Blast centering collar set (5" to 12").....	01131

Spin-Blast SB-836 (8" to 36" pipe ID)	
Spin-Blast tool less carriage with	
1/4" x 1-3/4" nozzles (2).....	02601
Spin-Blast carriage (8" to 17").....	03641
Spin-Blast carriage (12" to 36").....	04971
Spare parts kit.....	02603

Spin-Blast SB-3660 (36" to 60" pipe ID)	Stock No.
Spin-Blast tool less carriage and nozzles.....	10547
(Order nozzles and carriage separately)	
Spin-Blast carriage.....	10560
Spare parts kit.....	10894

Pipe-Pro XL™ (16" to 60" pipe ID) pneumatic motor driven	
Pipe-Pro XL™ (16" to 31") less nozzles.....	27792
Pipe-Pro XL™ (16" to 60") less nozzles.....	28046
Pipe-Pro XL™ (32" to 60") conversion kit.....	28047

Leg extension kits (set of six)	
6".....	27793
12".....	27794
26".....	27795

Nozzle extensions (set of two)	
6".....	25118
12".....	24647

Tool	Pipe ID	Nozzle Orifice	No. of Nozzles	Air Consumption @ 100 psi		Stock Number
				New	Worn	
Hollo-Blast Jr.	3/4" - 2"	9/32"	1	80	140	
Hollo- Blast	2" - 12"	1/2" (standard)	1	200	260	
		5/8" (standard)	1	350	550	

Note: Air volume required to operate Spin-Blast models is greater than air normally consumed by the two nozzles; the additional air volume is needed for blast head rotation. Maintaining recommended air volume ensures proper function and maximum productivity.

Spin-Blast SB-836	8" - 12"	1/4" x 1-3/4" (std)	2	160	280	01408
	8" - 12"	5/16" x 1-3/4"	2	280	400	01409
	8" - 12"	3/8" x 1-3/4"	2	400	630	01411
	12" - 20"	5/16" x 3"	2	280	400	01410
	20" - 36"	3/8" x 4"	2	400	630	01412
Spin-Blast SB-3660	36" - 60"	1/4" long venturi	2	160	280	23514
		5/16" long venturi	2	280	400	23515
		3/8" long venturi	2	400	630	23516

Note: Air volume for Pipe Pro XL™ models is volume consumed by nozzles and independent air motor to operate blast head. Air consumption is for air consumed as nozzles wear. Replace nozzles when worn to the next 1/16"

Pipe Pro XL™	16" - 60"	1/4" short venturi	2	210	330	23508
		5/16" short venturi	2	330	450	23509
		3/8" short venturi	2	450	600	23516
		1/4" long venturi	2	210	330	23514
		5/16" long venturi	2	330	450	23515
		3/8" long venturi	2	400	630	23516



ISO 9001 certified. Clemco is committed to continuous improvement. Specifications are subject to change without notice.

© 2019 Clemco Industries Corp. • One Cable Car Drive • Washington, MO 63090

Phone (636) 239-4300 • Fax (800) 726-7559

Stock No. 25730

www.clemcoindustries.com

0411 Rev. C 02/ 2019