



BLASTMASTER® 250 CFM AFTERCOOLER WITH MOISTURE SEPARATOR



BUILT MARCO
TOUGH
MARCO MANUFACTURED

PART NUMBERS AND SCHEMATICS GUIDE

Company Profile

Since 1944, Marco has developed a strong tradition of providing innovative and reliable products and services to the surface preparation and protective coatings industries. We are the world's premier provider of Abrasives, Blasting Equipment, Coating Equipment, Engineered Systems, Rental Equipment, Safety Equipment, Service, and Repair.

Through innovative designs and a total commitment to quality, Marco manufactures products that increase production rates, create a safer workplace, and reduce maintenance costs. Marco's industry experience, manufacturing capabilities, legendary customer service, product availability, logistics services, and technology leadership is your assurance that we deliver high quality products and services, providing the best value to you, our customer.

The Marco Difference

- **Industry Experience** – With Marco on your team, you have access to expertise which can only come from decades of industry leadership. We have organized our engineering department, production specialists, customer operations, and safety support into a "Center of Competence." As a Marco customer, you have access to hundreds of years of cumulative experience related to your operations.
- **Manufacturing Excellence** – Marco is a U.S. based, ISO 9001:2008 certified manufacturer of equipment for the Surface Preparation and Protective Coatings industries. Marco's engineers benchmark the industry to ensure that we design and manufacture superior products that set the "Gold Standard" for performance, safety, and quality.
- **Legendary Customer Service** – Marco's legendary customer service team is staffed by friendly, highly-trained individuals who are focused on providing the highest level of product support, order accuracy, and customer satisfaction.
- **Product Availability** – We stock over 10,000 SKU's and have over 45 shipping locations to serve North American and International markets for all major brands of blasting and painting equipment. As the largest provider of surface preparation and protective coatings equipment in the world, our inventory levels and product availability are unmatched.
- **Logistics Services** – Marco's in-house logistics team is dedicated to moving your shipment anywhere in the world. We move over 14,000 truckloads every year, allowing you to save on freight costs by leveraging our buying power. Lower your process costs with a single invoice, which includes product and freight.
- **Technology Leadership** – Our website provides: Operator's Manuals, Part Numbers and Schematics Guides, MSDS information, and Features and Specifications Guides, providing access to information 24/7. Our Extranet application allows you to receive quotes and place orders online. Our Intranet maintains a complete record of your purchase history to assist with ongoing support of your existing equipment and future purchasing decisions.

Vision Statement

Marco is the world's premier provider of Abrasives, Blasting Equipment, Coating Equipment, Engineered Systems, Rental Equipment, Safety Equipment, Service, and Repair.

Mission Statement

Marco provides strong leadership and innovation to the surface preparation and protective coatings industries. We dedicate our efforts to the continuous improvement of our products, services, processes, people, and most importantly, the quality of our customer's experience.

Quality Statement

Marco is committed to providing superior quality in the design, manufacturing, distribution, rental, service, and repair of our products. Our ISO 9001:2008 certification extends throughout all operations in all locations. Continuous improvement of our processes and supply chain Integration comprise the core of our business strategy for delivering exceptional quality and value in all Marco products and services.

Management Philosophy

We are a company dedicated to the success of every customer and associate. We discuss, debate, challenge, measure, and test our ideas. We will be boundless and limitless in our passion to improve. Through sound leadership and dedicated associates, we will ensure a long term, profitable future for Marco, our associates, customers, and suppliers.

TABLE OF CONTENTS

Company Profile	2
Table of Contents	3
Part Numbers	4
Specifications	5
Part Numbers and Schematics	6-14
Blastmaster® 250 CFM Cart Mounted Aftercooler With Moisture Separator—Pneumatic	6-7
Blastmaster® 250 CFM Cart Mounted Aftercooler With Moisture Separator—Electric	8-9
Aftercooler Assembly—Pneumatic	10
Aftercooler Assembly—Electric	11
Transfer Hose Assembly	12
Air Regulator/Lubricator	13
1-1/4" Junior Extractor Moisture Separator Assembly ...	14
Optional Accessories	15-16
Airflow Shutoff Kits – Lug Fittings	15
Airflow Shutoff Kits – Hammerlock Fittings	15
Pipe Plugs	16
Lubrication	16
Maintenance Notes	17-19

PART NUMBERS

BLASTMASTER® 250 CFM CART MOUNTED AFTERCOOLER WITH MOISTURE SEPARATOR

Part Numbers	Inlet			Outlet			Power Source	Filter, Regulator, and Lubricator	Electric Starter Box
	Inlet Quantity	Inlet Size	Fittings	Outlet Quantity	Outlet Size	Fittings			
10101340	1	1-1/4"	Included	5	(1) 2", (4) 1"	Not Included	Pneumatic	Included	Not Included
10101736	1	1-1/4"	Included	5	(1) 2", (4) 1"	Not Included	115-Volt AC	Not Included	Included
10108811	1	1-1/4"	Included	5	(1) 2", (4) 1"	Not Included	230-Volt AC	Not Included	Included

* Inlet fittings include 1-1/4" 4-Lug Female Coupling.



Blastmaster® 250 CFM Aftercooler with Moisture Separator – Pneumatic



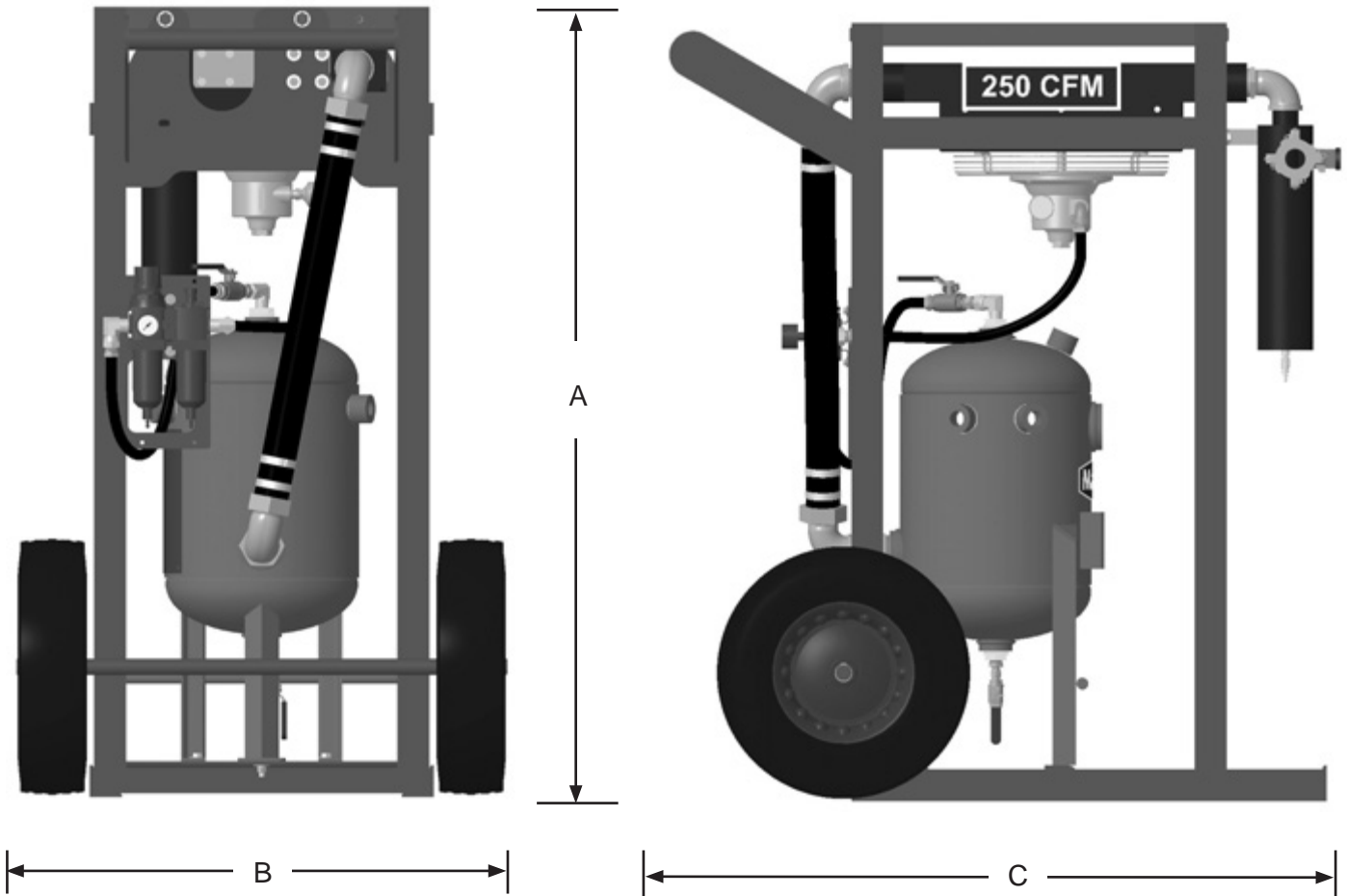
Blastmaster® 250 CFM Aftercooler with Moisture Separator – Electric

SPECIFICATIONS

Lubrication: SAE 10 oil or Air Tool Anti-freeze Lubricant

Empty Weight: 385 Pounds

Overall Dimensions: A: 49 1/4"
B: 30 1/2"
C: 42 1/2"



Pneumatic model shown, Electric model is has same dimensions.

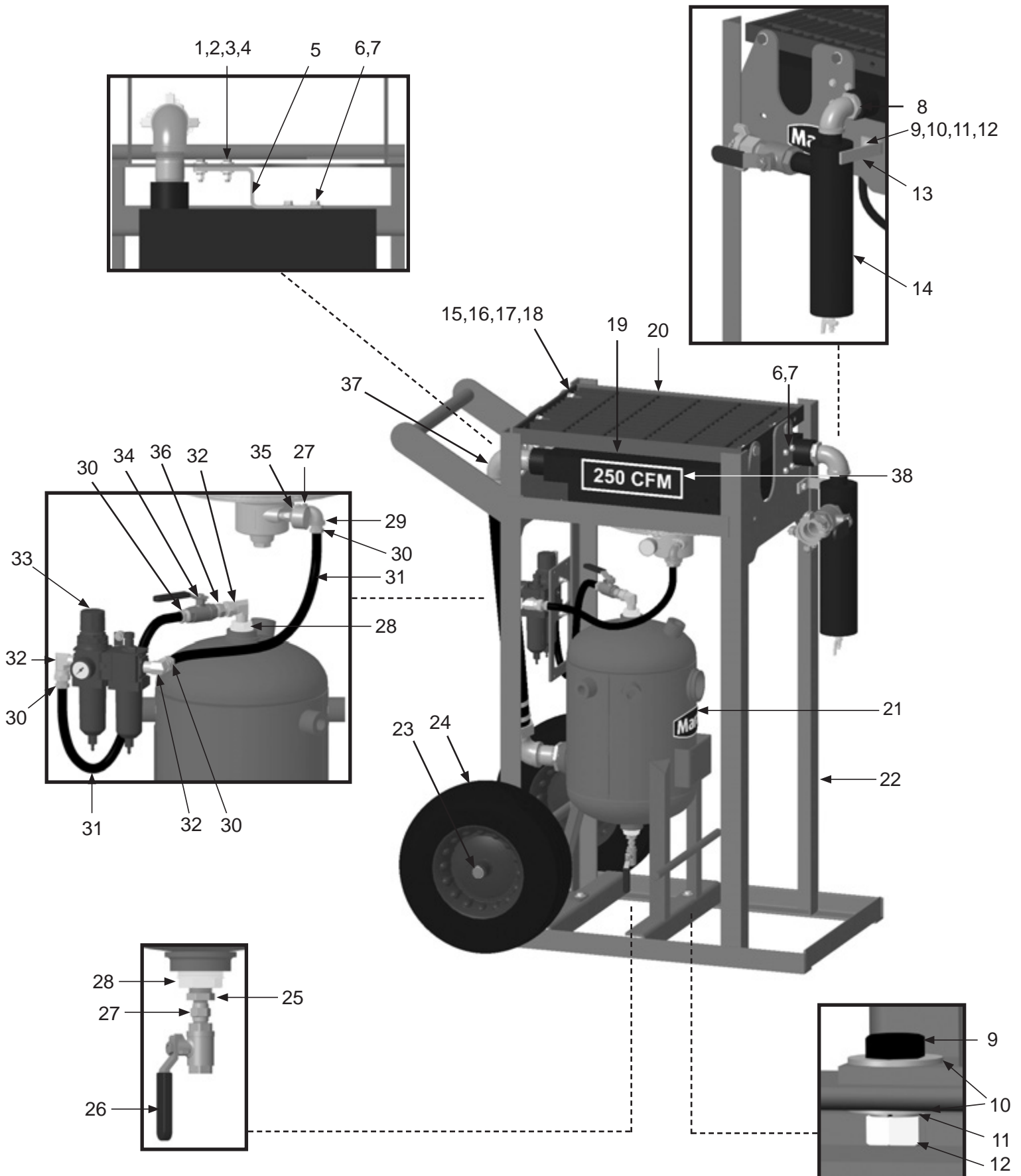
PART NUMBERS AND SCHEMATICS

Blastmaster® 250 CFM Cart Mounted Aftercooler With Moisture Separator –Pneumatic

Item #	Part #	Description
Fig. 1		
—	10101340	Blastmaster® 250 CFM Aftercooler with Moisture Separator – Pneumatic
1	1014019	5/16-18 x 1-1/4" Hex Bolt <i>(Four Required)</i>
2	10L805003	5/16" Flat Washer <i>(Eight Required)</i>
3	10L805014	5/16" Lock Washer <i>(Four Required)</i>
4	1035046	5/16-18 Nut <i>(Four Required)</i>
5	10108979	Adapter Bracket
6	10106878	M8 x 1.25 x 20MM Bolt <i>(Eight Required)</i>
7	1014017	1/4" Flat Washer <i>(12 Required)</i>
8	1011501	1-1/2" to 1-1/4" NPT Bushing
9	10101059	3/8-6 x 1-1/4" Galvanized Bolt <i>(Four Required)</i>
10	10101942	3/8" Galvanized Flat Washer <i>(Eight Required)</i>
11	10L805015	3/8" Lock Washer <i>(Four Required)</i>
12	10101938	3/8-16 Hex Nut <i>(Four Required)</i>
13	10108980	Moisture Separator Stop Bracket
14	—	1-1/4" Junior Extractor Moisture Separator Assembly <i>(See Fig. 7)</i>
15	10101943	1/2-13 x 1-3/4" Hex Bolt <i>(Four Required)</i>
16	10100674	1/2" Flat Washer <i>(Eight Required)</i>
17	10100675	1/2" Split Lock Washer <i>(Four Required)</i>
18	10101941	1/2-13 Hex Nut <i>(Four Required)</i>
19	10AKGCC2002	250 CFM Aftercooler - Pneumatic—Complete <i>(See Fig. 3)</i>
20	10101271	Aftercooler Protective Grate
21	10101318	800 CFM 6-Outlet Aftercooler Tank
22	10108972	Frame
23	1006205	Wheel Clip <i>(Four Required)</i>
24	1006064	Wheel <i>(Two Required)</i>
25	1011818	1/2" to 1/4" NPT Bushing
26	1080050	1/4" NPT Full Port Ball Valve
27	1017019	1/4" NPT Hex Nipple <i>(Two Required)</i>
28	1011820	1-1/4" to 1/2" NPT Bushing <i>(Two Required)</i>
29	10101185	1/2" x 1/4" NPT 90° Elbow
30	10PAF050	1/2" Push-on Air Hose Fitting <i>(Four Required)</i>
31	10AH012	1/2" I.D. Air Hose <i>(Per Foot)</i>
32	10SAP1290	1/2" NPT 90° Swivel <i>(Three Required)</i>
33	—	Air Filter/Regulator/Lubricator with Pressure Gauge <i>(See Fig. 6)</i>
34	10L363	1/2" NPT Full Port Ball Valve
35	10101784	Muffler
36	20100677	1/2" NPT Hex Nipple
37	—	Transfer Hose Assembly <i>(See Fig. 5)</i>
38	1094539	250 CFM Decal <i>(Two Required)</i>
—	1091017	Hazard Identification Tag
—	106M091	Part Numbers and Schematics Guide – Blastmaster® 250 CFM Aftercooler with Moisture Separator
—	1090091	Operator's Manual – Blastmaster® 250 CFM Aftercooler with Moisture Separator

PART NUMBERS AND SCHEMATICS

Figure 1: Blastmaster® 250 CFM Cart Mounted Aftercooler With Moisture Separator – Pneumatic



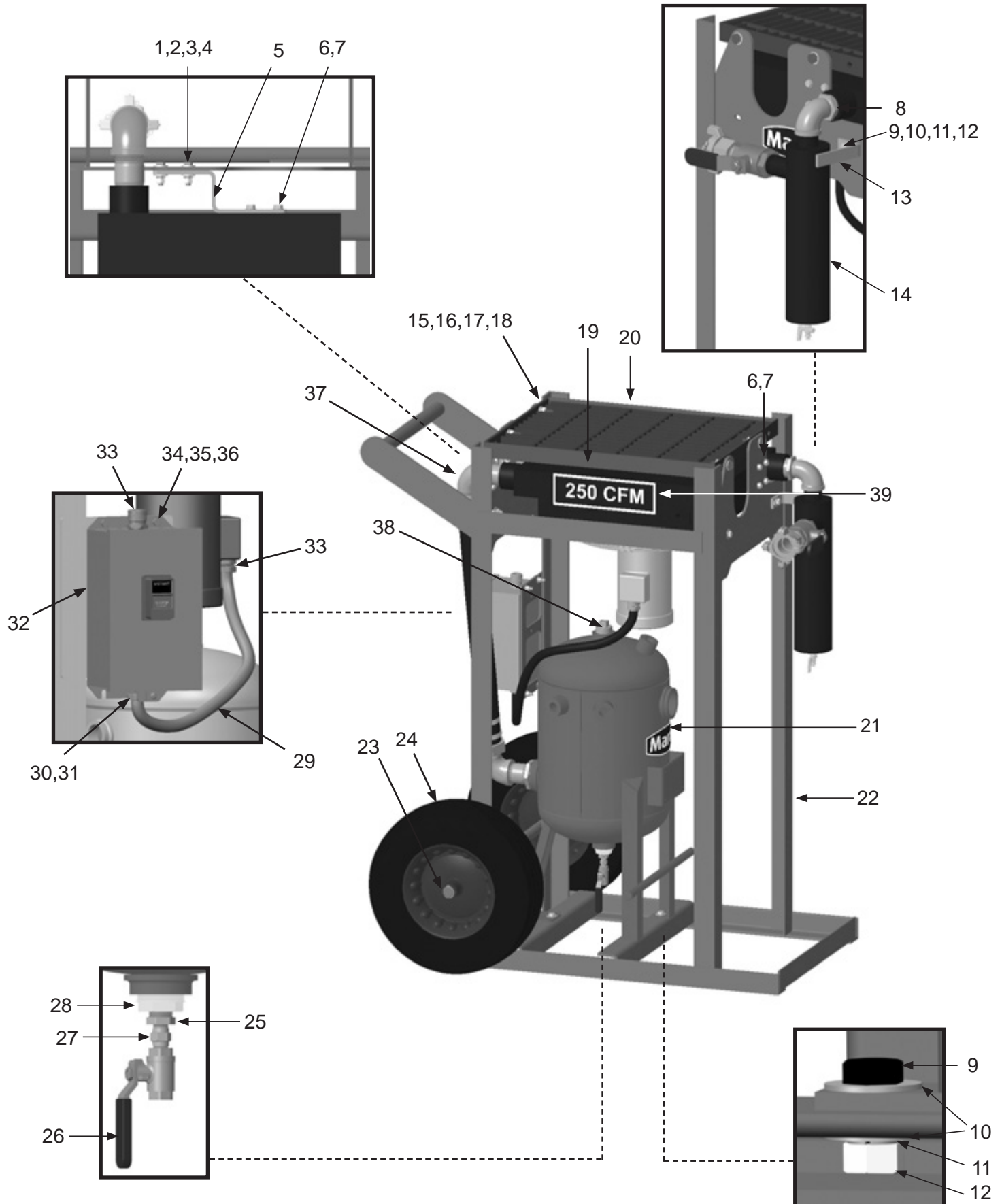
PART NUMBERS AND SCHEMATICS

Blastmaster® 250 CFM Cart Mounted Aftercooler With Moisture Separator – Electric

Item #	Part #	Description
Fig. 2		
—	10101736	Blastmaster® 250 CFM Aftercooler with Moisture Separator – 115-Volt Electric
—	10108811	Blastmaster® 250 CFM Aftercooler with Moisture Separator – 230-Volt Electric
1	1014019	5/16-18 x 1-1/4" Hex Bolt <i>(Four Required)</i>
2	10L805003	5/16" Flat Washer <i>(Eight Required)</i>
3	10L805014	5/16" Lock Washer <i>(Four Required)</i>
4	1035046	5/16-18 Nut <i>(Four Required)</i>
5	10108979	Adapter Bracket
6	10106878	M8 x 1.25 x 20MM Bolt <i>(Eight Required)</i>
7	1014017	1/4" Flat Washer <i>(16 Required)</i>
8	1011501	1-1/2" to 1-1/4" NPT Bushing
9	10101059	3/8-6 x 1-1/4" Galvanized Bolt <i>(Four Required)</i>
10	10101942	3/8" Galvanized Flat Washer <i>(Eight Required)</i>
11	10L805015	3/8" Lock Washer <i>(Four Required)</i>
12	10101938	3/8-16 Hex Nut <i>(Four Required)</i>
13	10108980	Moisture Separator Stop Bracket
14	—	1-1/4" Junior Extractor Moisture Separator Assembly <i>(See Fig. 7)</i>
15	10101943	1/2-13 x 1-3/4" Hex Bolt <i>(Four Required)</i>
16	10100674	1/2" Flat Washer <i>(Eight Required)</i>
17	10100675	1/2" Split Lock Washer <i>(Four Required)</i>
18	10101941	1/2-13 Hex Nut <i>(Four Required)</i>
19	10AKGCC2001	250 CFM Aftercooler - 115-Volt Electric—Complete <i>(See Fig. 3)</i>
20	10101271	Aftercooler Protective Grate
21	10101318	800 CFM 6-Outlet Aftercooler Tank
22	10108972	Frame
23	1006205	Wheel Clip <i>(Four Required)</i>
24	1006064	Wheel <i>(Two Required)</i>
25	1011818	1/2" to 1/4" NPT Bushing
26	1080050	1/4" NPT Full Port Ball Valve
27	1017019	1/4" NPT Hex Nipple
28	1011820	1-1/4" to 1/2" NPT Bushing
29	20RSEL050UL	1/2" UL/UA Seal-Tite Conduit <i>(Per Foot)</i>
30	20101299	3/4" NPT Cord Grip
31	10108844	3/4" x 1/2" Reducing Washer <i>(Two Required)</i>
32	10101760	Motor Starter —Single Phase
33	20RST50	1/2" Straight Conduit Connector <i>(Two Required)</i>
34	1012154	1/4-20 x 1" Hex Bolt Zinc <i>(Four Required)</i>
35	1014017	1/4" Flat Washer Zinc <i>(Eight Required)</i>
36	10101939	1/4-20 Hex Lock Nut <i>(Four Required)</i>
37	—	Transfer Hose Assembly <i>(See Fig. 5)</i>
38	1011902	1-1/4" NPT Plug
39	1094539	250 CFM Decal <i>(Two Required)</i>
—	10108795	Thermal Unit - Full Load Current 6.36 - 7.08 Amps <i>(For use with 10101736)</i>
—	10108793	Thermal Unit - Full Load Current 3.38 - 3.94 Amps <i>(For use with 10108811)</i>
—	1091017	Hazard Identification Tag
—	106M091	Part Numbers and Schematics Guide – Blastmaster® 250 CFM Aftercooler with Moisture Separator
—	1090091	Operator's Manual – Blastmaster® 250 CFM Aftercooler with Moisture Separator

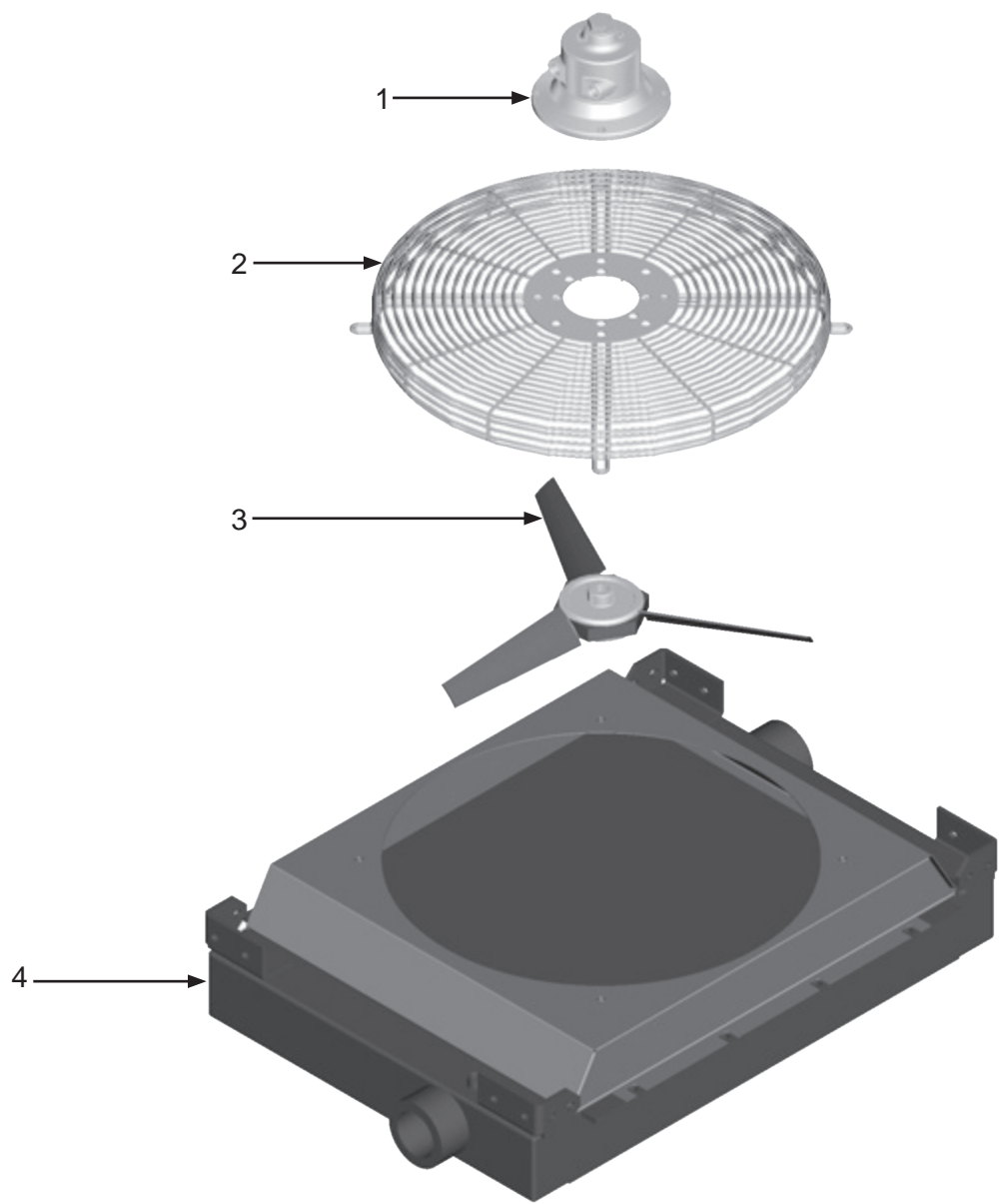
PART NUMBERS AND SCHEMATICS

Figure 2: Blastmaster® 250 CFM Cart Mounted Aftercooler With Moisture Separator – Electric



PART NUMBERS AND SCHEMATICS

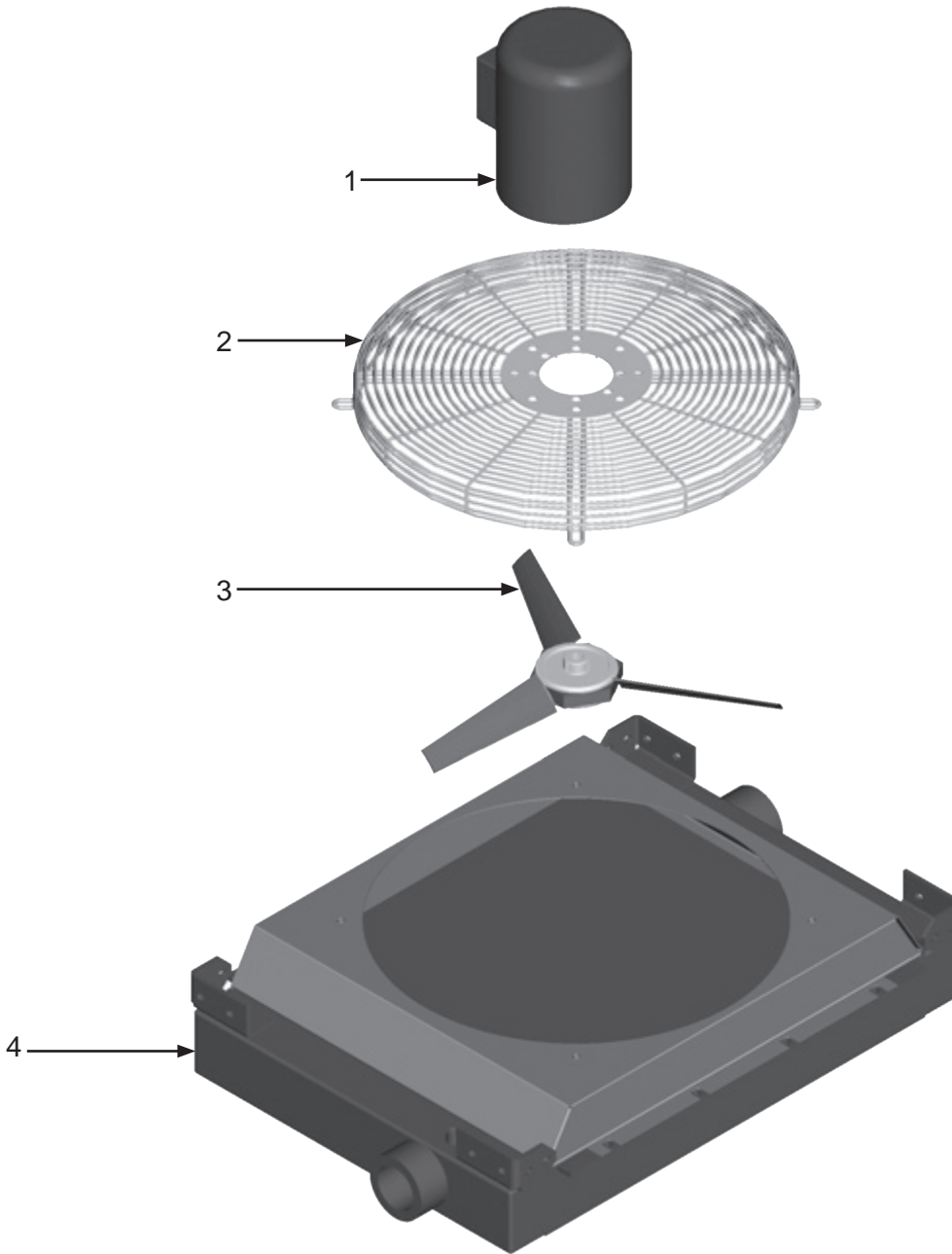
Figure 3: Aftercooler Assembly – Pneumatic



Item #	Part #	Description
Fig. 3		
	10AKGCC2002	250 CFM Aftercooler – Pneumatic – Complete
1	10101780	Air Motor
2	10101783	Fan Guard
3	10101782	Fan Blade Assembly
4	10101779	Aftercooler Core
—	10101784	Muffler for Air Motor
—	10101781	Air Motor Service Kit <i>Includes: Shaft Seal, Drive End Bearing, Dead End Bearing, Vanes (Quantity of Four), Push Pins (Quantity of Four), Vane Springs (Quantity of Four), Shim, End Cap Gasket, Muffler Cartridge, and Muffler Felt</i>

PART NUMBERS AND SCHEMATICS

Figure 4: Aftercooler Assembly – Electric



Item #	Part #	Description
--------	--------	-------------

Fig. 4

	10AKGCC2001	250 CFM Aftercooler – Electric – Complete
--	--------------------	--

1	10101785	Electric Motor – (115 Volt to 208-230 Volt) – Single Phase
---	----------	--

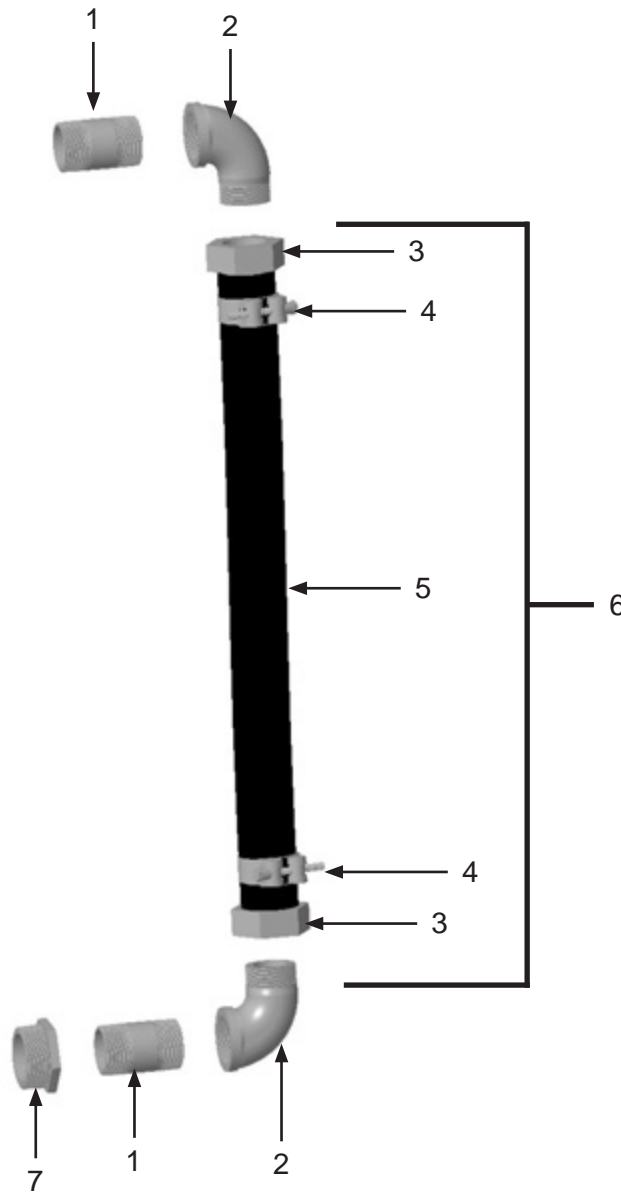
2	10101783	Fan Guard
---	----------	-----------

3	10101782	Fan Blade Assembly
---	----------	--------------------

4	10101779	Aftercooler - Core Only
---	----------	-------------------------

PART NUMBERS AND SCHEMATICS

Figure 5: Transfer Hose Assembly



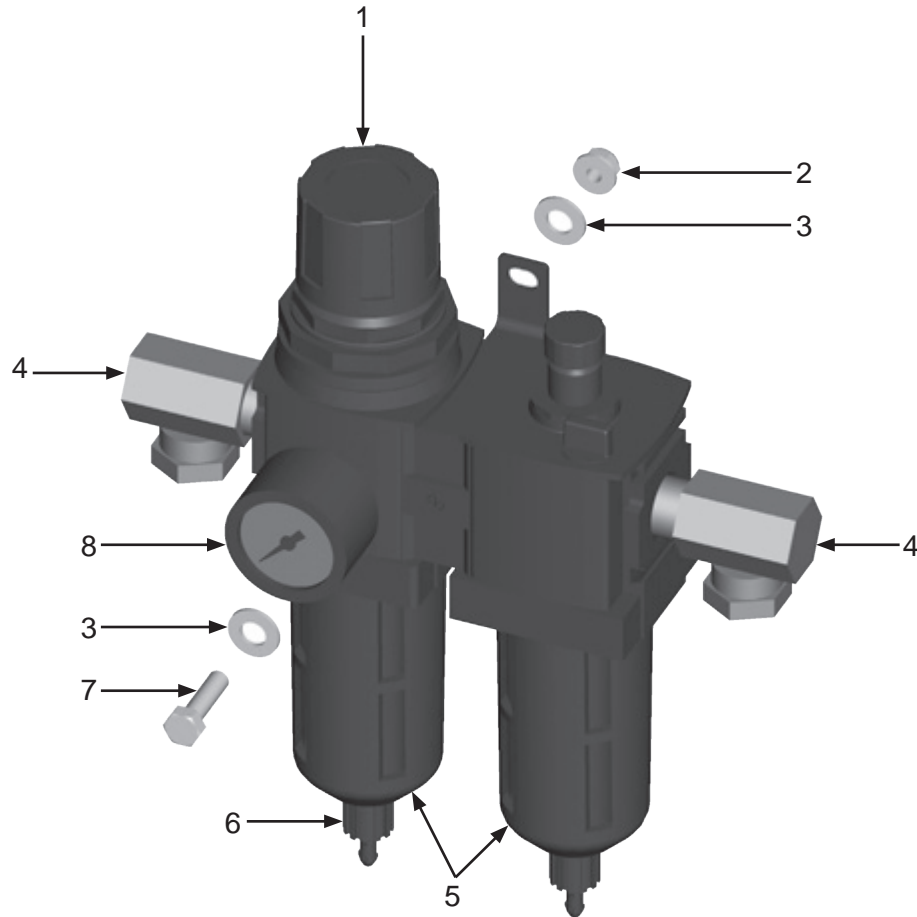
Item #	Part #	Description
--------	--------	-------------

Fig. 5

1	1011203	1-1/2" x 3" NPT Nipple <i>(Two Required)</i>
2	1011839	1-1/2" NPT 90° Street Elbow <i>(Two Required)</i>
3	10SFE4	1-1/2" Female Swivel Air Hose End <i>(Two Required)</i>
4	10103738	1-1/2" T-Bolt Hose Clamp <i>(Two Required)</i>
5	10AH112B	1-1/2" I.D. Air Hose
6	1006312	1-1/2" Pusher Line Kit <i>Includes Item #: 3, 4 and 5 (Quantity of Three Feet)</i>
7	1001868	2" x 1-1/2" Hex Bushing

PART NUMBERS AND SCHEMATICS

Figure 6: Air Regulator/Lubricator



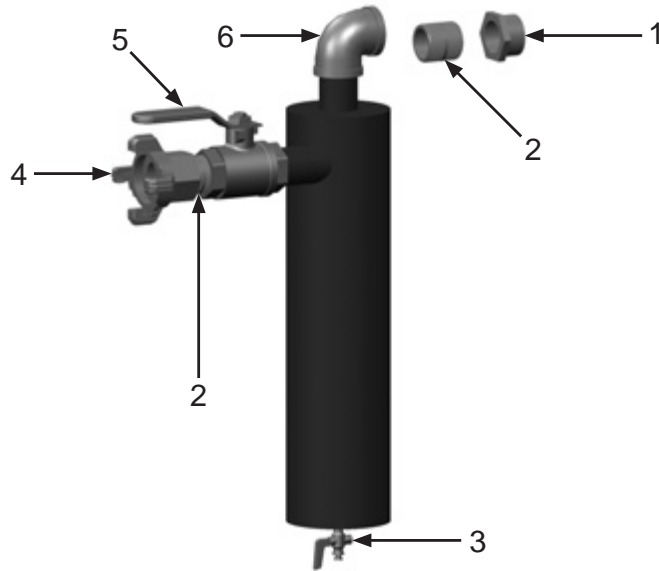
Item #	Part #	Description
--------	--------	-------------

Fig. 6

1	10101232	Filter/Regulator/Lubricator with Pressure Gauge
2	10101939	1/4" Nylon Insert Lock Nut (<i>Two Required</i>)
3	1014017	1/4" Flat Washer (<i>Four Required</i>)
4	10SAP1290	1/2" 90° Swivel (<i>Two Required</i>)
5	10101235	Polycarbonate Bowl (<i>Two Required</i>)
6	10101234	Manual Drain
7	1012154	1/4-20 X 1" Bolt (<i>Two Required</i>)
8	1028606	Pressure Gauge – 0-160 PSI 1/4" – Back Mount
–	10101233	Filter Element
–	1070517	Pneumatic Air Tool Oil–32 oz. bottle





PART NUMBERS AND SCHEMATICS






Figure 7: 1-1/4" Junior Extractor Moisture Separator Assembly








Item #	Part #	Description
Fig. 7		
—	10101314	Blastmaster® 1-1/4" Junior Extractor Moisture Separator
1	1011501	1-1/2" x 1-1/4" Bushing
2	1011201	1-1/4" NPT Close Nipple (<i>Two Required</i>)
3	1012101	1/4" NPT Brass Petcock
4	10ME3	4-lug Air Hose Fitting - 1-1/4" NPT (F)
5	1011602	1-1/4" NPT Full Port Ball Valve
6	1006204	1-1/4" NPT 90° Elbow
—	106M349	Part Numbers and Schematics Guide – Blastmaster® Extractor Moisture Separators

OPTIONAL ACCESSORIES

		AIRFLOW SHUTOFF KITS – LUG FITTINGS			
	Part Numbers	Pipe String I.D.	Close Nipple	Full Port Ball Valve	Coupling
	10103731	1"	1012151	1011601	10ME2
	10103732	1-1/4"	1011201 (Quantity of Two)	1011602	10ME3
	10103733	1-1/2"	1014015 (Quantity of Two)	1011603	10ME4
	10103734	2"	1001806 (Quantity of Two)	1011604	10ME5

		AIRFLOW SHUTOFF KITS – HAMMERLOCK FITTINGS			
	Part Numbers	Pipe String I.D.	Close Nipple	Full Port Ball Valve	Coupling Spud
	10103830	1"	10102151 (Quantity of Two)	1011601	10DXGB13
	10103831	1-1/4"	1011201 (Quantity of Two)	1011602	10DXGB18
	10103832	1-1/2"	1014015 (Quantity of Two)	1011603	10DXGB23
	10103833	2"	1001806 (Quantity of Two)	1011604	10DXGB28
	10103934	3"	10101040 (Quantity of Two)	1011608	10GB38

OPTIONAL ACCESSORIES

	Part Numbers	GALVANIZED SQUARE HEAD PIPE PLUGS
		Size
	1011901	1"
	1011902	1-1/4"
	1011101	1-1/2"
	1011823	2"
	10101034	3"

Part Numbers	LUBRICATION
1070517	Pneumatic Air Tool Oil - 32 oz. bottle

MAINTENANCE NOTES

[illegible]

MAINTENANCE NOTES

[illegible]

MAINTENANCE NOTES

[illegible]

CONTACT CENTER

- 3425 East Locust Street
Davenport, IA 52803

ph: 800.BLAST.IT (800.252.7848)

ph: 563.324.2519

fax: 563.324.6258

REGIONAL BRANCH OFFICES

- **Iowa**
Davenport
- **Louisiana**
Gonzales
Lafayette
- **Ohio**
Youngstown
- **Texas**
Beaumont
Corpus Christi
Deer Park



ABRASIVES

BLASTING

COATING

DUST COLLECTORS

ENGINEERED SYSTEMS

RENTAL

SAFETY

SERVICE & REPAIR

VACUUMS

40+ NATIONWIDE SHIPPING LOCATIONS



★ Marco Regional Branch Offices
and Shipping Locations

● Direct Shipping Locations

CONTACT MARCO

800.BLAST.IT
(800.252.7848)
563.324.2519
FAX: 563.324.6258

WWW.MARCO.US
SALES@MARCO.US