



# BLASTMASTER® 160 **CU. FT.** ABRASIVE BLASTING POTS



**BUILT** MARCO  
TOUGH  
MARCO MANUFACTURED

## PART NUMBERS AND SCHEMATICS GUIDE

## Company Profile

Since 1944, Marco has developed a strong tradition of providing innovative and reliable products and services to the surface preparation and protective coatings industries. We are the world's premier provider of Abrasives, Blasting, Coating, Dust Collectors, Engineered Systems, Rental, Safety, Service, Repair, & Modernization, and Vacuums.

Through innovative designs and a total commitment to quality, Marco manufactures products that increase production rates, create a safer workplace, and reduce maintenance costs. Marco's industry experience, manufacturing capabilities, legendary customer service, product availability, logistics services, and technology leadership is your assurance that we deliver high quality products and services, providing the best value to you, our customer.

## The Marco Difference

- **Industry Experience** – With Marco on your team, you have access to expertise which can only come from decades of industry leadership. We have organized our engineering department, production specialists, customer operations, and safety support into a "Center of Competence." As a Marco customer, you have access to hundreds of years of cumulative experience related to your operations.
- **Manufacturing Excellence** – Marco is a manufacturer of equipment for the Surface Preparation and Protective Coatings industries. Marco's engineers benchmark the industry to ensure that we design and manufacture superior products that set the "Gold Standard" for performance, safety, and quality.
- **Legendary Customer Service** – Marco's legendary customer service team is staffed by friendly, highly-trained individuals who are focused on providing the highest level of product support, order accuracy, and customer satisfaction.
- **Product Availability** – We stock over 10,000 SKU's and have more than 45 shipping locations to serve North American and International markets for all major brands of blasting and coating equipment. As the largest provider of surface preparation and protective coatings equipment in the world, our inventory levels and product availability are unmatched.
- **Logistics Services** – Marco's in-house logistics team is dedicated to moving your shipment anywhere in the world. We move more than 14,000 truckloads every year, allowing you to save on freight costs by leveraging our buying power. Lower your process costs with a single invoice, which includes product and freight.
- **Technology Leadership** – Our website provides: Operator's Manuals, Part Numbers and Schematics Guides, SDS information, and Features & Specifications Guides, providing access to information 24/7. Our Extranet application allows you to receive quotes and place orders online. Our Intranet maintains a complete record of your purchase history to assist with ongoing support of your existing equipment and future purchasing decisions.

## Vision Statement

Marco is the world's premier provider of Abrasives, Blasting, Coating, Dust Collectors, Engineered Systems, Rental, Safety, Service, Repair, & Modernization, and Vacuums.

## Mission Statement

Marco provides strong leadership and innovation to the surface preparation and protective coatings industries. We dedicate our efforts to the continuous improvement of our products, services, processes, people, and most importantly, the quality of our customer's experience.

## Quality Statement

Marco is committed to providing superior quality in the design, manufacturing, distribution, rental, service, and repair of our products. Continuous improvement of our processes and supply chain Integration comprise the core of our business strategy for delivering exceptional quality and value in all Marco products and services.

## Management Philosophy

We are a company dedicated to the success of every customer and associate. We discuss, debate, challenge, measure, and test our ideas. We will be boundless and limitless in our passion to improve. Through sound leadership and dedicated associates, we will ensure a long term, profitable future for Marco, our associates, customers, and suppliers.

# TABLE OF CONTENTS

|  |    |   |    |
|--|----|---|----|
| <b>Company Profile</b> . . . . .   | 1  | Yard Trailer . . . . .                                      | 45 |
| <b>Part Numbers</b> . . . . .  | 3  | Fork-Pocket Skid Weldment Off Shore . . . . .               | 47 |
| <b>Part Numbers and Schematics</b> . . . . .   | 9  | Fork-Pocket Skid . . . . .                                  | 48 |
| Moisture Separator Assembly . . . . .  | 9  | Blastmaster® Large Exhaust Muffler . . . . .                | 49 |
| External Fittings and Components, Side View . . .  | 11 | Hinged Ladder Extension (Optional) . . . . .                | 51 |
| Internal Fittings . . . . .  | 13 | Blastmaster® Bulk Bag Racks (Optional) . . . . .            | 52 |
| External Fittings and Components, Rear View . . .  | 14 | Blastmaster® Bulk Bag Rack Locking Pin (Optional) . . . . . | 52 |
| Pipe String Assembly . . . . .   | 15 | Abrasive Screen and Funnel (Optional) . . . . .             | 53 |
| Moisture Separator Mounting Assembly . . . . .   | 16 | <b>Literature References</b> . . . . .                      | 54 |
| Blastmaster® Maxum III Abrasive Metering Valve . . . . .                                   | 17 |   |    |
| Blastmaster® Maxum III Abrasive Metering Valve<br>— Urethane Sleeve . . . . .              | 19 |   |    |
| Blastmaster® Maxum III Abrasive Metering Valve<br>— Tungsten Carbide Sleeve — 2" . . . . . | 21 |   |    |
| Blastmaster® Maxum III Abrasive Metering Valve<br>— Urethane Sleeve — 2" . . . . .         | 23 |   |    |
| Blastmaster® 130P Remote Control System . . . . .  | 25 |   |    |
| 1-1/2" NPT High-flow GateKeeper Air Valve . . . . .  | 27 |   |    |
| 12-Volt DC Blastmaster® 130E Remote Control<br>System . . . . .                            | 29 |   |    |
| 120-Volt AC Blastmaster® 130E Remote Control<br>System . . . . .                           | 31 |   |    |
| Blastmaster® 120-Volt AC to 12-Volt AC Power<br>Converters . . . . .                       | 33 |   |    |
| 12-Volt DC 190 Electric Control Assembly . . . . .   | 35 |   |    |
| 12-Volt DC 190 Electric Solenoid . . . . .   | 36 |   |    |
| 12-Volt AC 190 Electric Control Assembly . . . . .   | 37 |   |    |
| 12-Volt AC 190 Electric Solenoid . . . . .   | 38 |   |    |
| Power Distribution Boxes . . . . .   | 39 |   |    |
| 190 Pneumatic Solenoid . . . . .   | 40 |   |    |
| Blastmaster® Camlock Closure Lockout Device . . . . .                                      | 41 |   |    |
| Highway Trailer . . . . .  | 43 |   |    |

## PART NUMBERS

### BLASTMASTER® 160 CU. FT. ABRASIVE BLASTING POTS WITH HIGHWAY TRAILER

|                     | Mounting Option | Number of Outlets | Power Source | Remote Control Switch | Metering Valve Sleeve |          |
|---------------------|-----------------|-------------------|--------------|-----------------------|-----------------------|----------|
|                     | Highway Trailer |                   |              |                       | Tungsten Carbide      | Urethane |
| <b>Part Numbers</b> | 10100913        | 2                 | Pneumatic    | 152                   | X                     |          |
|                     | 10100908        | 2                 | Pneumatic    | 152                   |                       | X        |
|                     | 10106447        | 2                 | 12-Volt DC   | —                     | X                     |          |
|                     | 10100943        | 2                 | 12-Volt DC   | 151                   | X                     |          |
|                     | 10100938        | 2                 | 12-Volt DC   | 151                   |                       | X        |
|                     | 10100953        | 2                 | 120-Volt AC  | 151                   | X                     |          |
|                     | 10100948        | 2                 | 120-Volt AC  | 151                   |                       | X        |
|                     | 10100923        | 3                 | Pneumatic    | 152                   | X                     |          |
|                     | 10100918        | 3                 | Pneumatic    | 152                   |                       | X        |
|                     | 10100963        | 3                 | 12-Volt DC   | 151                   | X                     |          |
|                     | 10100958        | 3                 | 12-Volt DC   | 151                   |                       | X        |
|                     | 10100973        | 3                 | 120-Volt AC  | 151                   | X                     |          |
|                     | 10100968        | 3                 | 120-Volt AC  | 151                   |                       | X        |
|                     | 10100933        | 4                 | Pneumatic    | 152                   | X                     |          |
|                     | 10100928        | 4                 | Pneumatic    | 152                   |                       | X        |
|                     | 10106450        | 4                 | 12-Volt DC   | —                     | X                     |          |
|                     | 10100983        | 4                 | 12-Volt DC   | 151                   | X                     |          |
|                     | 10100978        | 4                 | 12-Volt DC   | 151                   |                       | X        |
|                     | 10100993        | 4                 | 120-Volt AC  | 151                   | X                     |          |
| 10100988            | 4               | 120-Volt AC       | 151          |                       | X                     |          |



The highway trailer includes electric brakes, fenders, and a DOT approved light package.



## PART NUMBERS

### BLASTMASTER® 160 CU. FT. ABRASIVE BLASTING POTS WITH YARD TRAILER

|                     | Mounting Option | Number of Outlets | Power Source | Remote Control Switch | Metering Valve Sleeve |          |
|---------------------|-----------------|-------------------|--------------|-----------------------|-----------------------|----------|
|                     | Yard Trailer    |                   |              |                       | Tungsten Carbide      | Urethane |
| <b>Part Numbers</b> | 10100912        | 2                 | Pneumatic    | 152                   | X                     |          |
|                     | 10100907        | 2                 | Pneumatic    | 152                   |                       | X        |
|                     | 10106448        | 2                 | 12-Volt DC   | —                     | X                     |          |
|                     | 10100942        | 2                 | 12-Volt DC   | 151                   | X                     |          |
|                     | 10100937        | 2                 | 12-Volt DC   | 151                   |                       | X        |
|                     | 10100952        | 2                 | 120-Volt AC  | 151                   | X                     |          |
|                     | 10100947        | 2                 | 120-Volt AC  | 151                   |                       | X        |
|                     | 10100922        | 3                 | Pneumatic    | 152                   | X                     |          |
|                     | 10100917        | 3                 | Pneumatic    | 152                   |                       | X        |
|                     | 10100962        | 3                 | 12-Volt DC   | 151                   | X                     |          |
|                     | 10100957        | 3                 | 12-Volt DC   | 151                   |                       | X        |
|                     | 10100972        | 3                 | 120-Volt AC  | 151                   | X                     |          |
|                     | 10100967        | 3                 | 120-Volt AC  | 151                   |                       | X        |
|                     | 10100932        | 4                 | Pneumatic    | 152                   | X                     |          |
|                     | 10100927        | 4                 | Pneumatic    | 152                   |                       | X        |
|                     | 10106451        | 4                 | 12-Volt DC   | —                     | X                     |          |
|                     | 10100982        | 4                 | 12-Volt DC   | 151                   | X                     |          |
|                     | 10100977        | 4                 | 12-Volt DC   | 151                   |                       | X        |
| 10100992            | 4               | 120-Volt AC       | 151          | X                     |                       |          |
| 10100987            | 4               | 120-Volt AC       | 151          |                       | X                     |          |



The yard trailer is ideal for applications where mobility around the work site is required.

## PART NUMBERS

### BLASTMASTER® 160 CU. FT. ABRASIVE BLASTING POTS WITH OFFSHORE SKID

| Mounting Option | Number of Outlets | Power Source | Remote Control Switch | Metering Valve Sleeve |          |
|-----------------|-------------------|--------------|-----------------------|-----------------------|----------|
|                 |                   |              |                       | Tungsten Carbide      | Urethane |
| Offshore Skid   |                   |              |                       |                       |          |
| 10103277        | 2                 | Pneumatic    | 152                   | X                     |          |
| 10103276        | 2                 | Pneumatic    | 152                   |                       | X        |
| 10106449        | 2                 | 12-Volt DC   | —                     | X                     |          |
| 10103282        | 2                 | 12-Volt DC   | 151                   | X                     |          |
| 10103281        | 2                 | 12-Volt DC   | 151                   |                       | X        |
| 10103287        | 2                 | 120-Volt AC  | 151                   | X                     |          |
| 10103286        | 2                 | 120-Volt AC  | 151                   |                       | X        |
| 10103279        | 3                 | Pneumatic    | 152                   | X                     |          |
| 10103278        | 3                 | Pneumatic    | 152                   |                       | X        |
| 10103284        | 3                 | 12-Volt DC   | 151                   | X                     |          |
| 10103283        | 3                 | 12-Volt DC   | 151                   |                       | X        |
| 10103289        | 3                 | 120-Volt AC  | 151                   | X                     |          |
| 10103288        | 3                 | 120-Volt AC  | 151                   |                       | X        |
| 10102562        | 4                 | Pneumatic    | 152                   | X                     |          |
| 10103280        | 4                 | Pneumatic    | 152                   |                       | X        |
| 10106452        | 4                 | 12-Volt DC   | —                     | X                     |          |
| 10102561        | 4                 | 12-Volt DC   | 151                   | X                     |          |
| 10103285        | 4                 | 12-Volt DC   | 151                   |                       | X        |
| 10103291        | 4                 | 120-Volt AC  | 151                   | X                     |          |
| 10103290        | 4                 | 120-Volt AC  | 151                   |                       | X        |

Part Numbers



Fork-pocket skid with impact guard and 10" x 4" fork-pocket tubes that sit 2" off the ground, and lifting lugs for 1" shackles.

## PART NUMBERS

### BLASTMASTER® 160 CU. FT. ABRASIVE BLASTING POTS WITH FORK-POCKET SKID

|                     | Mounting Option  | Number of Outlets | Power Source | Remote Control Switch | Metering Valve Sleeve |          |
|---------------------|------------------|-------------------|--------------|-----------------------|-----------------------|----------|
|                     | Fork-Pocket Skid |                   |              |                       | Tungsten Carbide      | Urethane |
| <b>Part Numbers</b> | 10100911         | 2                 | Pneumatic    | 152                   | X                     |          |
|                     | 10100906         | 2                 | Pneumatic    | 152                   |                       | X        |
|                     | 10100941         | 2                 | 12-Volt DC   | 151                   | X                     |          |
|                     | 10100936         | 2                 | 12-Volt DC   | 151                   |                       | X        |
|                     | 10100951         | 2                 | 120-Volt AC  | 151                   | X                     |          |
|                     | 10100946         | 2                 | 120-Volt AC  | 151                   |                       | X        |
|                     | 10100921         | 3                 | Pneumatic    | 152                   | X                     |          |
|                     | 10100916         | 3                 | Pneumatic    | 152                   |                       | X        |
|                     | 10100961         | 3                 | 12-Volt DC   | 151                   | X                     |          |
|                     | 10100956         | 3                 | 12-Volt DC   | 151                   |                       | X        |
|                     | 10100971         | 3                 | 120-Volt AC  | 151                   | X                     |          |
|                     | 10100966         | 3                 | 120-Volt AC  | 151                   |                       | X        |
|                     | 10100931         | 4                 | Pneumatic    | 152                   | X                     |          |
|                     | 10100926         | 4                 | Pneumatic    | 152                   |                       | X        |
|                     | 10100981         | 4                 | 12-Volt DC   | 151                   | X                     |          |
|                     | 10100976         | 4                 | 12-Volt DC   | 151                   |                       | X        |
|                     | 10100991         | 4                 | 120-Volt AC  | 151                   | X                     |          |
|                     | 10100986         | 4                 | 120-Volt AC  | 151                   |                       | X        |



The fork-pocket skid allows for ease of movement around a work site while using a mechanical lifting device.

## PART NUMBERS

### BLASTMASTER® 160 CU. FT. ABRASIVE BLASTING POTS WITH STATIONARY LEGS

| Mounting Option | Number of Outlets | Power Source | Remote Control Switch | Metering Valve Sleeve |          |
|-----------------|-------------------|--------------|-----------------------|-----------------------|----------|
|                 |                   |              |                       | Tungsten Carbide      | Urethane |
| Stationary      |                   |              |                       |                       |          |
| 10100909        | 2                 | Pneumatic    | 152                   | X                     |          |
| 10100904        | 2                 | Pneumatic    | 152                   |                       | X        |
| 10100939        | 2                 | 12-Volt DC   | 151                   | X                     |          |
| 10100934        | 2                 | 12-Volt DC   | 151                   |                       | X        |
| 10100949        | 2                 | 120-Volt AC  | 151                   | X                     |          |
| 10100944        | 2                 | 120-Volt AC  | 151                   |                       | X        |
| 10100919        | 3                 | Pneumatic    | 152                   | X                     |          |
| 10100914        | 3                 | Pneumatic    | 152                   |                       | X        |
| 10100959        | 3                 | 12-Volt DC   | 151                   | X                     |          |
| 10100954        | 3                 | 12-Volt DC   | 151                   |                       | X        |
| 10100969        | 3                 | 120-Volt AC  | 151                   | X                     |          |
| 10100964        | 3                 | 120-Volt AC  | 151                   |                       | X        |
| 10100929        | 4                 | Pneumatic    | 152                   | X                     |          |
| 10100924        | 4                 | Pneumatic    | 152                   |                       | X        |
| 10100979        | 4                 | 12-Volt DC   | 151                   | X                     |          |
| 10100974        | 4                 | 12-Volt DC   | 151                   |                       | X        |
| 10100989        | 4                 | 120-Volt AC  | 151                   | X                     |          |
| 10100984        | 4                 | 120-Volt AC  | 151                   |                       | X        |

Part Numbers



The 20" stationary legs are ideal when the abrasive blasting pot will be in the same location for an extended period of time.

## PART NUMBERS

### BLASTMASTER® 160 CU. FT. ABRASIVE BLASTING POTS WITH KWIKSTOP DEPRESSURIZATION SYSTEM

|                     | Mounting Options |              |               |                  | Number of Outlets | Power Source | Remote Control Switch | Metering Valve Sleeve | KwikStop Depressurization System |
|---------------------|------------------|--------------|---------------|------------------|-------------------|--------------|-----------------------|-----------------------|----------------------------------|
|                     | Highway Trailer  | Yard Trailer | Offshore Skid | Fork-Pocket Skid |                   |              |                       | Tungsten Carbide      |                                  |
| <b>Part Numbers</b> | 10106554         | 10106563     | 10106572      | 10106581         | 2                 | Pneumatic    | 152                   | X                     | X                                |
|                     | 10106548         | 10106557     | 10106566      | 10106575         | 2                 | 12-Volt DC   | 151                   | X                     | X                                |
|                     | 10106651         | 10106560     | 10106569      | 10106578         | 2                 | 120-Volt AC  | 151                   | X                     | X                                |
|                     | 10106555         | 10106564     | 10106573      | 10106582         | 3                 | Pneumatic    | 152                   | X                     | X                                |
|                     | 10106549         | 10106558     | 10106567      | 10106576         | 3                 | 12-Volt DC   | 151                   | X                     | X                                |
|                     | 10106552         | 10106561     | 10106570      | 10106579         | 3                 | 120-Volt AC  | 151                   | X                     | X                                |
|                     | 10106556         | 10106565     | 10106574      | 10106583         | 4                 | Pneumatic    | 152                   | X                     | X                                |
|                     | 10106650         | 10106559     | 10106568      | 10106577         | 4                 | 12-Volt DC   | 151                   | X                     | X                                |
|                     | 10106553         | 10106562     | 10106571      | 10106580         | 4                 | 120-Volt AC  | 151                   | X                     | X                                |



The Blastmaster® KwikStop Depressurization System quickly reduces the pressure from the blast hose when remote control switch is released. The abrasive-laden compressed air is exhausted into an expansion chamber where the abrasive is trapped and the air is vented to the atmosphere. This decreases the time required to remove pressure from the blast hose allowing the operator to reposition more quickly.



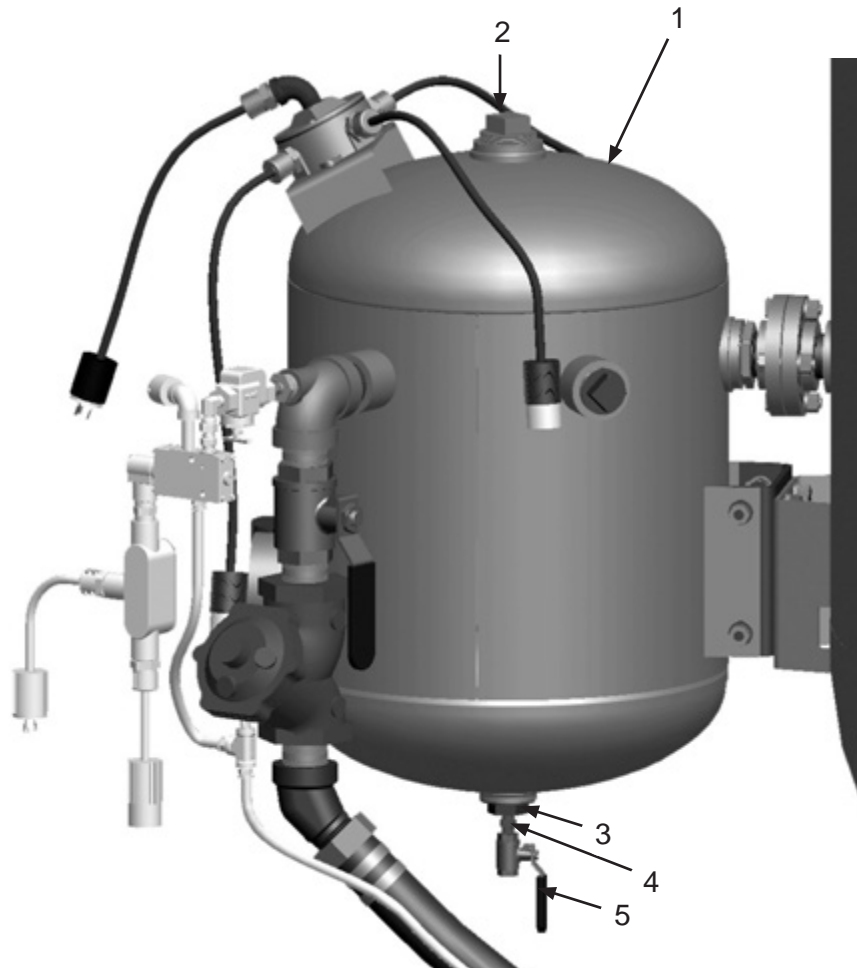
# PART NUMBERS AND SCHEMATICS

## Moisture Separator Assembly

| Item #        | Part #         | Description  |
|---------------|----------------|--|
| <b>Fig. 1</b> |                |  |
| 1             | 1081616        | 1600 CFM Moisture Separator for 160 Cu. Ft. and 120 Cu. Ft. Abrasive Blasting Pots |
| 2             | 1011823        | 2" Pipe Plug   |
| 3             | 1011822        | 1-1/2" (M) NPT x 1/4" (F) NPT Bushing  |
| 4             | 20PFHA24SA0404 | 1/4" Hex Nipple  |
| 5             | 1080050        | 1/4" NPT Full Port Brass Ball Valve  |

## PART NUMBERS AND SCHEMATICS

Figure 1: Moisture Separator Assembly



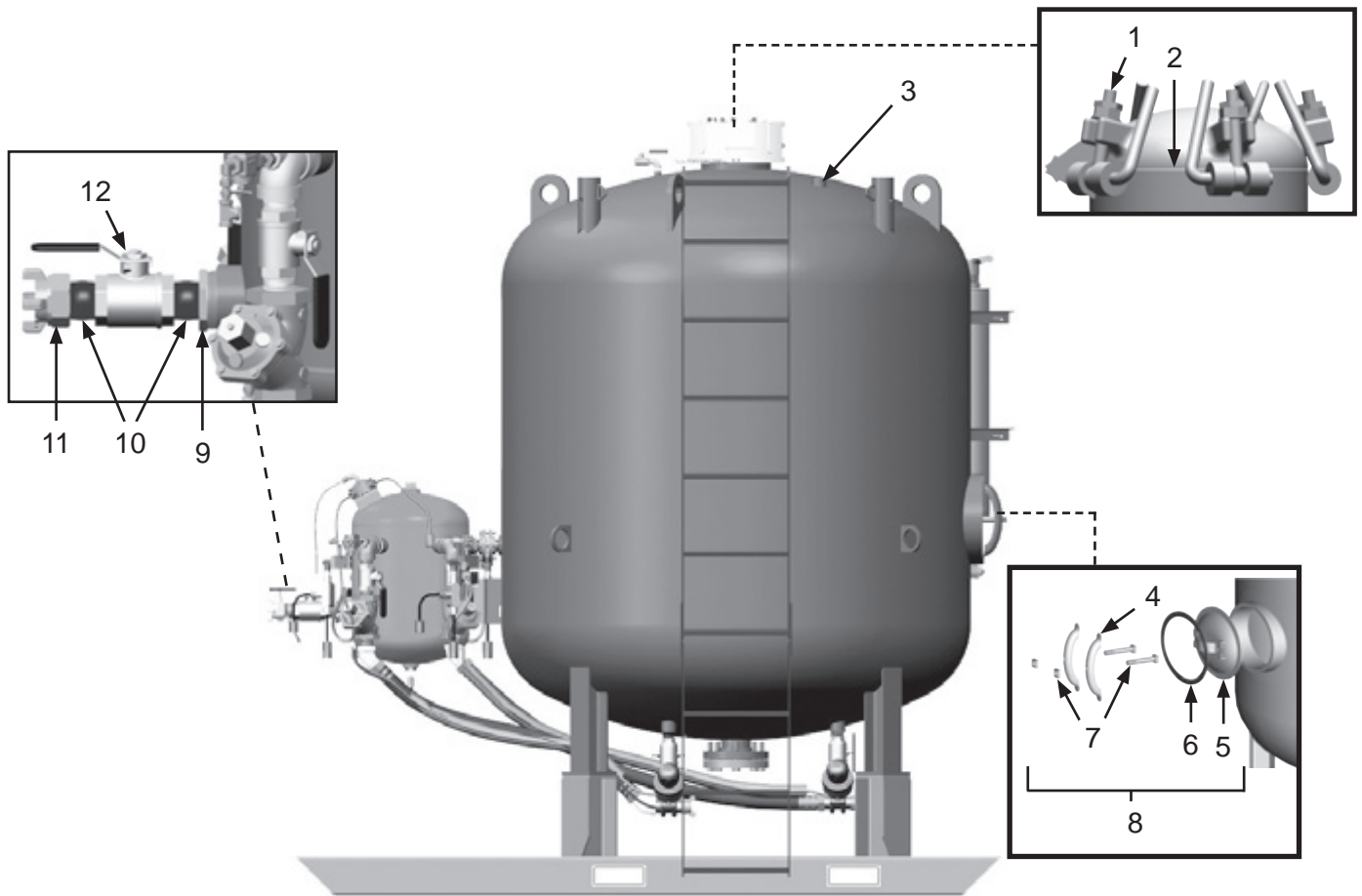
## PART NUMBERS AND SCHEMATICS

### External Fittings and Components, Side View

| Item #        | Part #   | Description   |
|---------------|----------|---|
| <b>Fig. 2</b> |          |   |
| 1             | 10100698 | Camlock Assembly ( <i>Five Required</i> )                                 |
| 2             | 10100697 | 10" Hatch O-Ring  |
| 3             | 1011902  | 1-1/4" NPT Pipe Plug ( <i>Two Required</i> )                              |
| 4             | 10000365 | Manway Crab ( <i>Two Required</i> )                                       |
| 5             | 10000364 | 12" x 16" Manway Cover  |
| 6             | 10100703 | 12" x 16" Manway Assembly Gasket  |
| 7             | 1011848  | Manway Nut and Bolt ( <i>Two Required</i> )                               |
| 8             | 10100702 | 12" x 16" Manway Assembly<br>( <i>Includes Item #'s: 4, 5, 6, and 7</i> ) |
| 9             | 10101183 | 3" MNPT x 2" FNPT Bushing   |
| 10            | 1001806  | 2" NPT Close Nipple ( <i>Two Required</i> )                               |
| 11            | 10ME5    | 2" 4-Lug Female NPT Coupling  |
| 12            | 1011604  | 2" NPT Full Port Brass Ball Valve   |

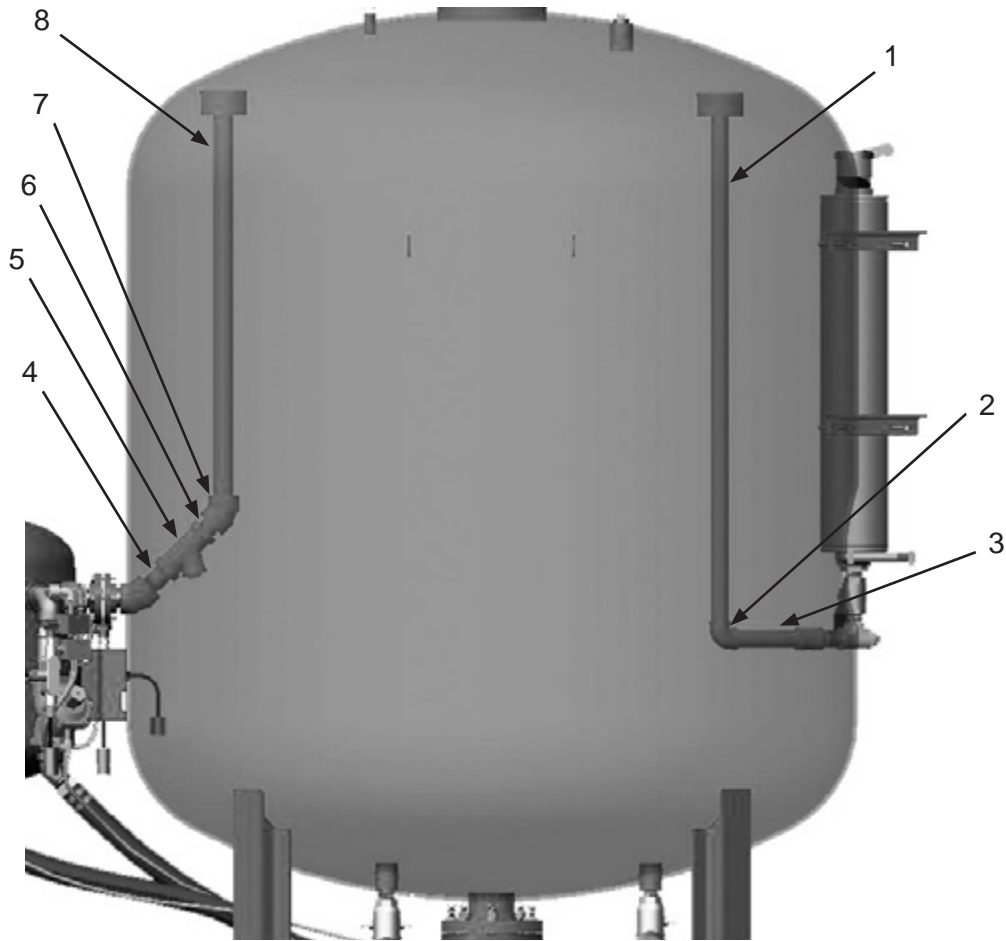
## PART NUMBERS AND SCHEMATICS

Figure 2: External Fittings and Components, Side View



## PART NUMBERS AND SCHEMATICS

Figure 3: Internal Fittings



| Item # | Part # | Description |
|--------|--------|-------------|
|--------|--------|-------------|

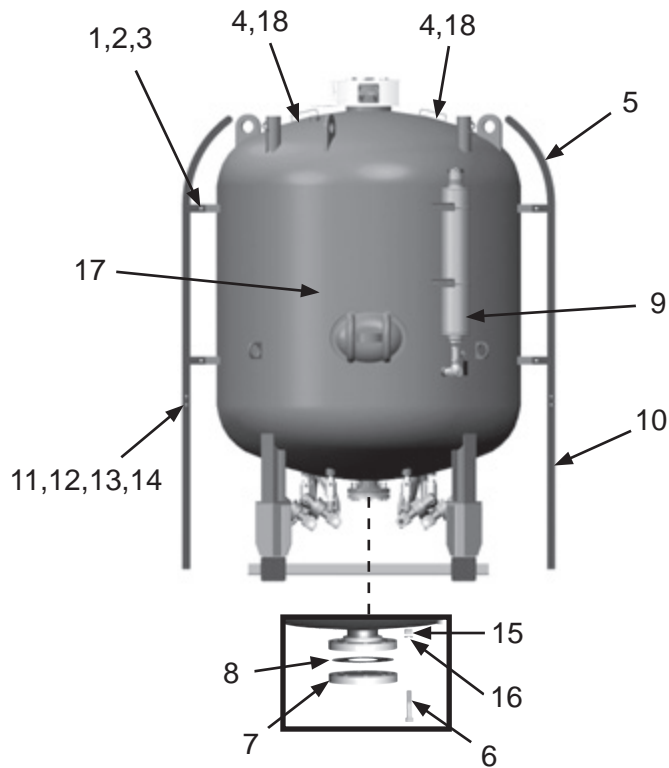
Fig. 3

|   |          |                                  |
|---|----------|----------------------------------|
| 1 | 10105384 | Outlet Tube with Deflector       |
| 2 | 1006204  | 1-1/4" NPT 90° Elbow             |
| 3 | 1006207  | 1-1/4" NPT X 8" Nipple           |
| 4 | 1011203  | 1-1/2" x 3" Nipple - Galvanized  |
| 5 | 1011841  | 1-1/2" Y-Strainer                |
| 6 | 1014015  | 1-1/2" Close Nipple - Galvanized |
| 7 | 10000328 | 1-1/2" 45° Coupling              |
| 8 | 10100682 | Inlet Tube with Deflector        |



## PART NUMBERS AND SCHEMATICS

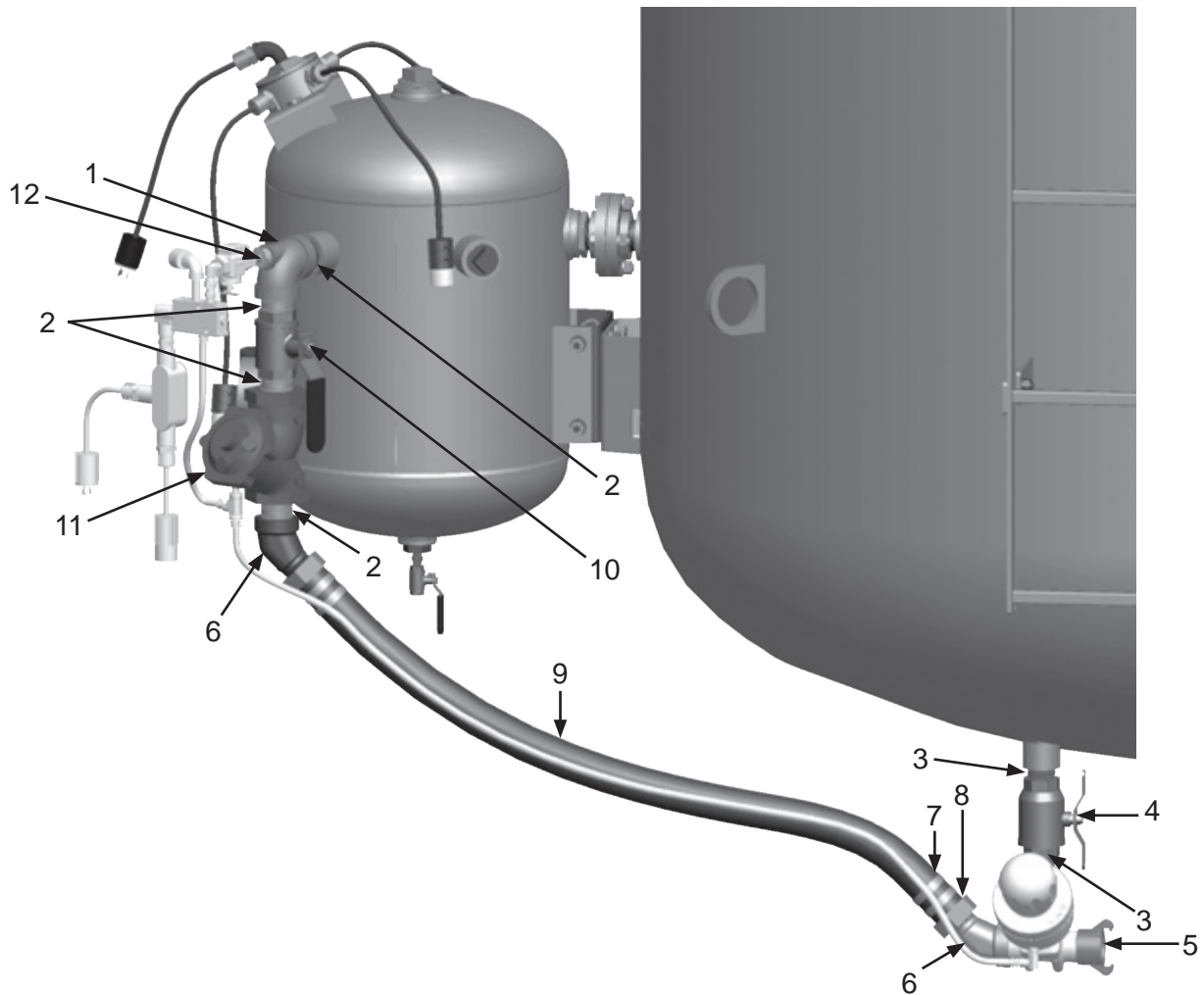
Figure 4: External Fittings and Components, Rear View



| Item #        | Part #   | Description   |
|---------------|----------|---|
| <b>Fig. 4</b> |          |   |
| 1             | 10100597 | 1/2-13 x 1-1/4" UNC Hex Bolt (Four Required per Ladder) |
| 2             | 10100598 | 1/2-13 Hex Nut (Four Required per Ladder)               |
| 3             | 10100599 | 1/2" Washer (Eight Required per Ladder)                 |
| 4             | 1091052  | Hazard Identification Sticker (Two Required)            |
| 5             | 10000343 | Ladder Kit (Two Required per Abrasive Blasting Pot)     |
| 6             | 10100594 | 3/4-10 x 4" Hex Bolt (Eight Required)                   |
| 7             | 10000498 | 4" Blind Flange   |
| 8             | 10000501 | 4" Flange Gasket  |
| 9             | 10103575 | Absorptive Silencer U5-3 (See Figure 28)                |
| 10            | 10000512 | Ladder Extension (Two Required)                         |
| —             | 10103915 | Ladder Extension with Tape (Two Required)               |
| 11            | 10101938 | 3/8-16 Hex Nut (Eight Required)                         |
| 12            | 10101936 | 3/8" Lock Washer (Eight Required)                       |
| 13            | 10101942 | 3/8" Flat Washer (Eight Required)                       |
| 14            | 10101059 | 3/8-16 x 1-1/4" A307 Bolt (Eight Required)              |
| 15            | 10100595 | 3/4-10 Hex Nut (Eight Required)                         |
| 16            | 10100596 | 3/4" Lock Washer (Eight Required)                       |
| 17            | 1091054  | Hazard Identification Sticker                           |
| 18            | 1091144  | Bulk Pot Hatch Sticker (Two Required)                   |

## PART NUMBERS AND SCHEMATICS

Figure 5: Pipe String Assembly



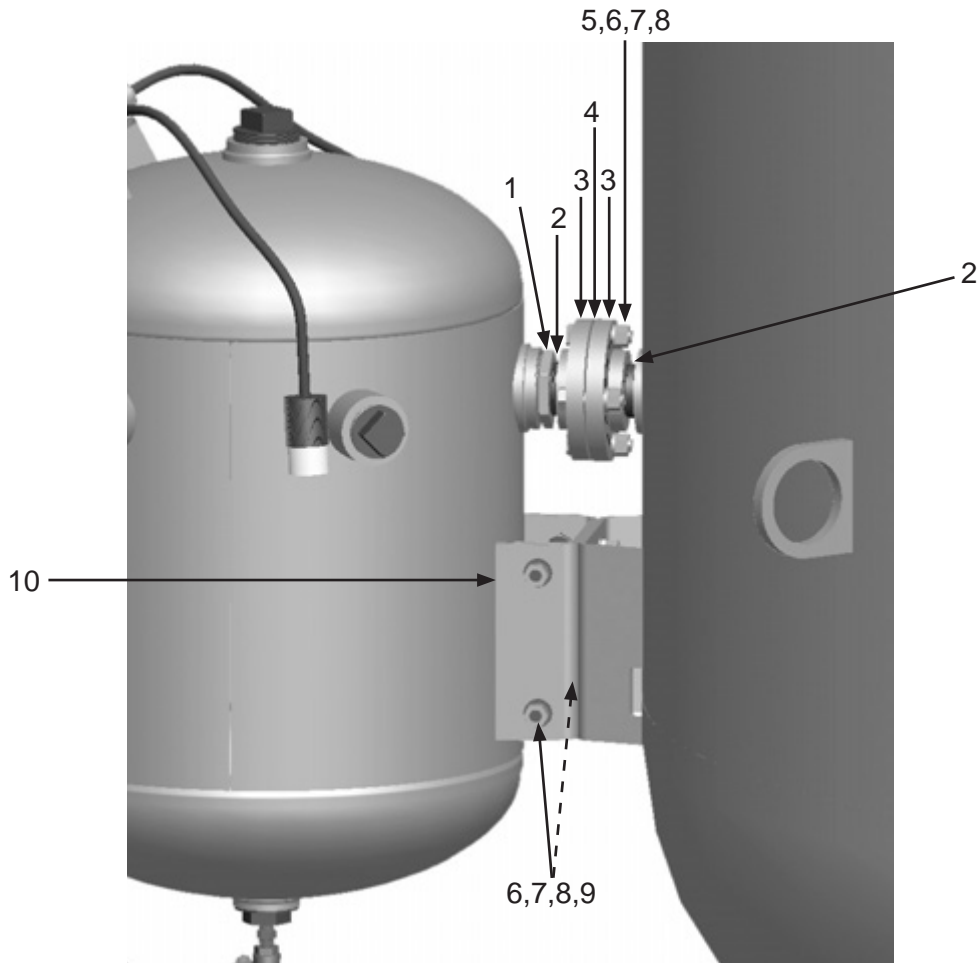
| Item # | Part # | Description |
|--------|--------|-------------|
|--------|--------|-------------|

**Fig. 5**

|    |          |  |
|----|----------|--|
| 1  | 1011829  | 1-1/2" x 3/4" x 1-1/2" Reducing Tee                      |
| 2  | 1014015  | 1-1/2" Close Nipple (Three Required)                     |
| 3  | 1011201  | 1-1/4" NPT Close Nipple                                  |
| 4  | 1011606A | 1-1/4" Union End Brass Ball Valve                        |
| 5  | 10SB2S   | 1-1/2" NPT Brass Tank Coupling                           |
| 6  | 1011805  | 1-1/2" NPT 45° Street Elbow (Two Required)               |
| 7  | 10AHCL3  | Band Clamp (Four Required)                               |
| 8  | 10SFE4   | 1-1/2" NPT Swivel Female Air Hose Fitting (Two Required) |
| 9  | 10AH112B | 1-1/2" I.D. Air Hose – Per Foot                          |
| 10 | 1011603  | 1-1/2" NPT Full Port Brass Ball Valve                    |
| 11 | 1013600  | High-Flow Gatekeeper Air Valve – 1-1/2"                  |
| 12 | 10100524 | 3/4" x 1/4" Galvanized Bushing                           |

## PART NUMBERS AND SCHEMATICS

Figure 6: Moisture Separator Mounting Assembly



| Item #        | Part #   | Description   |
|---------------|----------|---|
| <b>Fig. 6</b> |          |   |
| 1             | 1001868  | 2" x 1-1/2" Bushing                                   |
| 2             | 1011849  | 1-1/2" Close Nipple ( <i>Two Required</i> )           |
| 3             | 1011784  | 1-1/2" Flange ( <i>Two Required</i> )                 |
| 4             | 1011785  | 1-1/2" Flange Gasket                                  |
| 5             | 1011786  | 1/2" UNC x 2-1/4" Hex Bolt ( <i>Four Required</i> )   |
| 6             | 10100675 | 1/2" Lock Washer ( <i>Eight Required</i> )            |
| 7             | 10100674 | 1/2" Flat Washer ( <i>Eight Required</i> )            |
| 8             | 10101941 | 1/2-13 Hex Nut ( <i>Eight Required</i> )              |
| 9             | 10100597 | 1/2-13 x 1-1/4" UNC Hex Bolt ( <i>Four Required</i> ) |
| 10            | 10101171 | Bulk Pot Moisture Separator Mounting Bracket          |

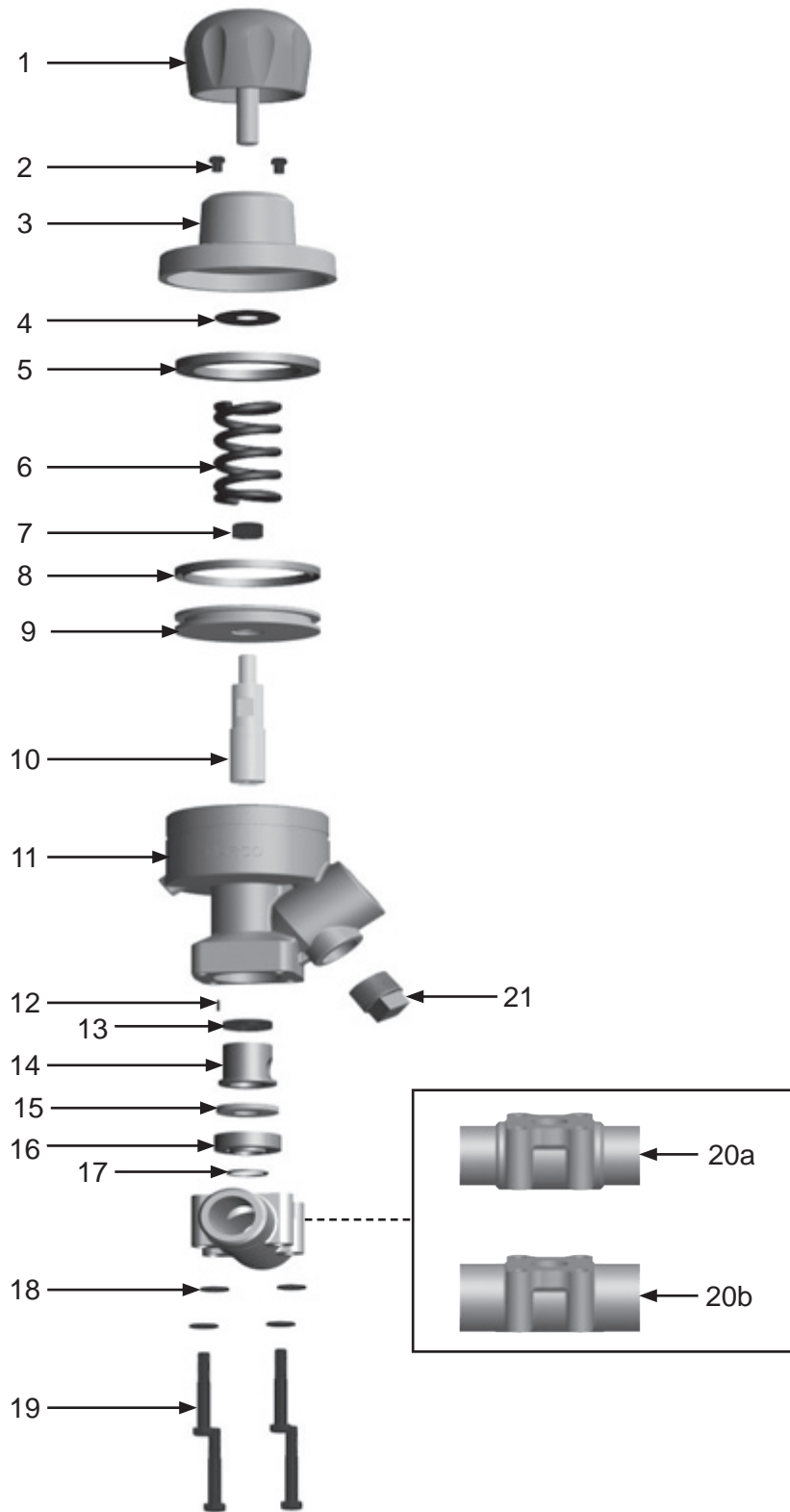
## PART NUMBERS AND SCHEMATICS

### Blastmaster® Maxum III Abrasive Metering Valve

| Item #        | Part #   | Description   |
|---------------|----------|---|
| <b>Fig. 7</b> |          |   |
| —             | 10101949 | 1-1/4" Blastmaster® Maxum III Abrasive Metering Valve – Tungsten Carbide Sleeve – Complete                  |
| —             | 10105907 | 1-1/4" Blastmaster® Maxum III Abrasive Metering Valve – Multi-port Sleeve – Complete                        |
| —             | 10101950 | 1-1/2" Blastmaster® Maxum III Abrasive Metering Valve – Tungsten Carbide Sleeve – Complete                  |
| —             | 10105908 | 1-1/2" Blastmaster® Maxum III Abrasive Metering Valve – Multi-port Sleeve – Complete                        |
| 1             | 10101969 | Knob  |
| 2             | 1012905  | 1/8" Breather Muffler <i>(Two Required)</i>   |
| 3             | 1014211  | Cap   |
| 4             | 10106831 | Vibration Disc  |
| 5             | 1014212  | Bump Ring   |
| 6             | 1014213  | Spring  |
| 7             | 1014022  | 1/2–13 Nut  |
| 8             | 1014215  | Piston Seal   |
| 9             | 1014216  | Piston  |
| 10            | 1014217  | Tungsten Carbide Plunger  |
| 11            | 10101772 | Body  |
| 12            | 1014240  | 3/32" x 3/8" Groove Pin   |
| 13            | 10103977 | Heavy-Duty Plunger Seal   |
| 14            | 1014238  | Tungsten Carbide Sleeve   |
| —             | 10102123 | Carbon Steel Sleeve- Multi-Port - <i>Optional (Orifice sizes: 0.178", 0.218", 0.278" and 0.343")</i>        |
| 15            | 1014237  | Seat for Tungsten Carbide Sleeve  |
| 16            | 1014236  | Insert for Tungsten Carbide Sleeve  |
| 17            | 1014235  | O-ring for Tungsten Carbide Sleeve  |
| 18            | 1014241  | 3/8" Washer <i>(Four Required)</i>  |
| 19            | 10101933 | 3/8–16 x 2-1/2" Bolt <i>(Four Required)</i>   |
| 20a           | 10000229 | 1-1/4" Base, Through Hardened <i>(For use with 10101949)</i>  |
| 20b           | 10000230 | 1-1/2" Base, Through Hardened <i>(For use with 10101950)</i>  |
| 21            | 1011901  | 1" Square Pipe Plug   |
| —             | 1014243  | Repair Kit with Tungsten Carbide Sleeve<br><i>(Includes Item #'s: 8, 10, 13, 14, 15, 16, and 17)</i>        |
| —             | 10105909 | Repair Kit with Carbon Steel Multi-port Sleeve<br><i>(Includes Item #'s: 8, 10, 13, 14, 15, 16, and 17)</i> |
| —             | 1014221  | Soft Seal Kit<br><i>(Includes Item #'s: 8, 13, 15 and 17)</i>   |
| —             | 1091045  | Hazard Identification Tag   |

# PART NUMBERS AND SCHEMATICS

Figure 7: Blastmaster® Maxum III Abrasive Metering Valve





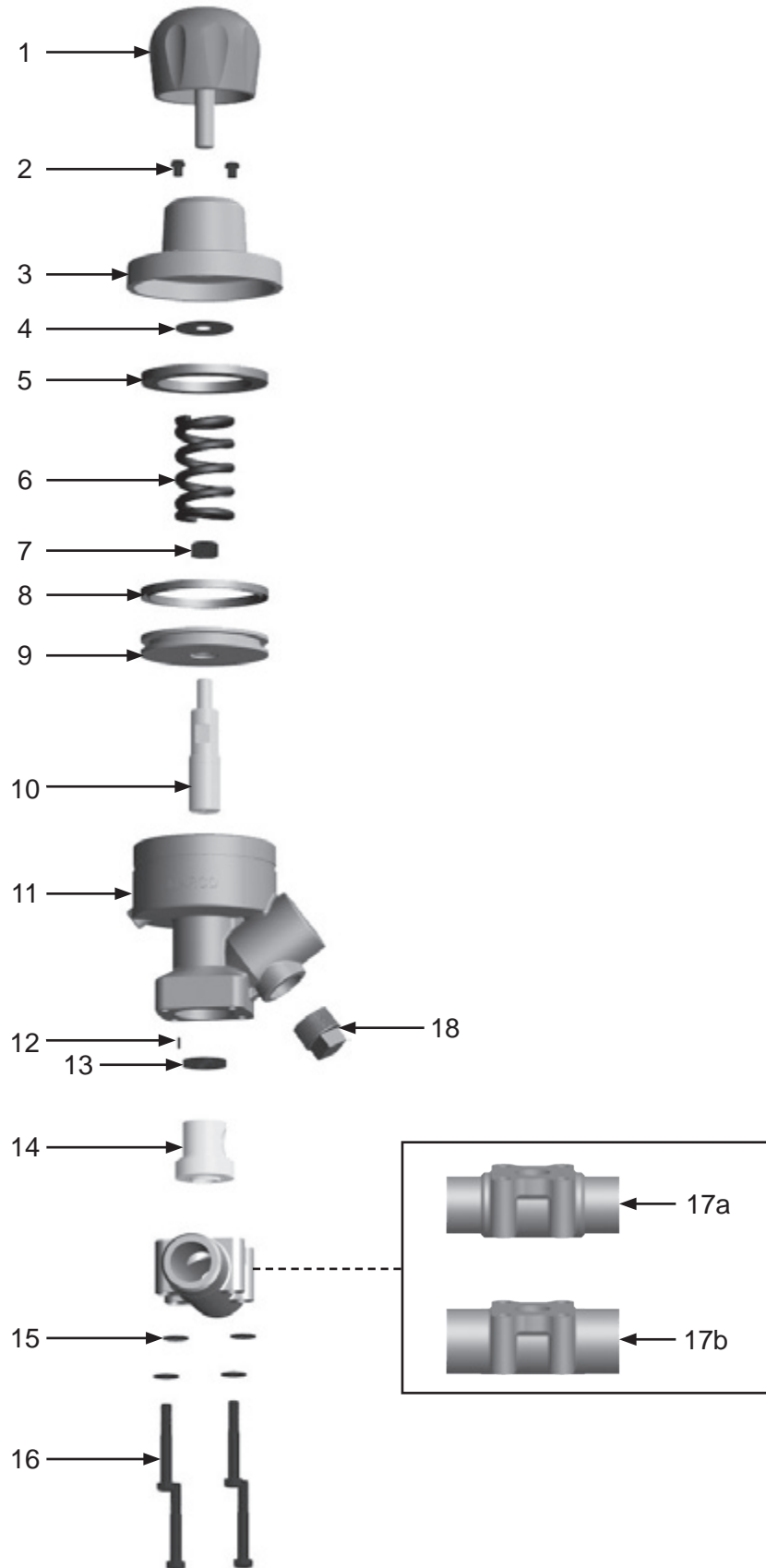
## PART NUMBERS AND SCHEMATICS

### Blastmaster® Maxum III Abrasive Metering Valve – Urethane Sleeve

| Item #        | Part #          | Description   |
|---------------|-----------------|---|
| <b>Fig. 8</b> |                 |   |
| —             | <b>10101945</b> | <b>1-1/4" Blastmaster® Maxum III Abrasive Metering Valve – Urethane Sleeve – Complete</b> |
| —             | <b>10101946</b> | <b>1-1/2" Blastmaster® Maxum III Abrasive Metering Valve – Urethane Sleeve – Complete</b> |
| 1             | 10101969        | Knob  |
| 2             | 1012905         | 1/8" Breather Muffler <i>(Two Required)</i>   |
| 3             | 1014211         | Cap   |
| 4             | 10106831        | Vibration Disc  |
| 5             | 1014212         | Bump Ring   |
| 6             | 1014213         | Spring  |
| 7             | 1014022         | 1/2–13 Nut  |
| 8             | 1014215         | Piston Seal   |
| 9             | 1014216         | Piston  |
| 10            | 1014217         | Tungsten Carbide Plunger  |
| 11            | 10101772        | Body  |
| 12            | 1014240         | 3/32" x 3/8" Groove Pin   |
| 13            | 10103977        | Heavy-Duty Plunger Seal   |
| 14            | 1014229         | Urethane Sleeve   |
| 15            | 1014241         | 3/8" Washer <i>(Four Required)</i>  |
| 16            | 10101933        | 3/8–16 x 2-1/2" Bolt <i>(Four Required)</i>   |
| 17a           | 10000229        | 1-1/4" Base, Through Hardened <i>(For use with 10101945)</i>                              |
| 17b           | 10000230        | 1-1/2" Base, Through Hardened <i>(For use with 10101946)</i>                              |
| 18            | 1011901         | 1" Square Pipe Plug   |
| —             | 1014244         | Repair Kit with Urethane Sleeve<br><i>(Includes Item #'s: 8, 10, 13 and 14)</i>           |
| —             | 1014222         | Soft Seal Kit<br><i>(Includes Item #'s: 8, 13, and 14)</i>                                |
| —             | 1091045         | Hazard Identification Tag   |

## PART NUMBERS AND SCHEMATICS

Figure 8: Blastmaster® Maxum III Abrasive Metering Valve – Urethane Sleeve



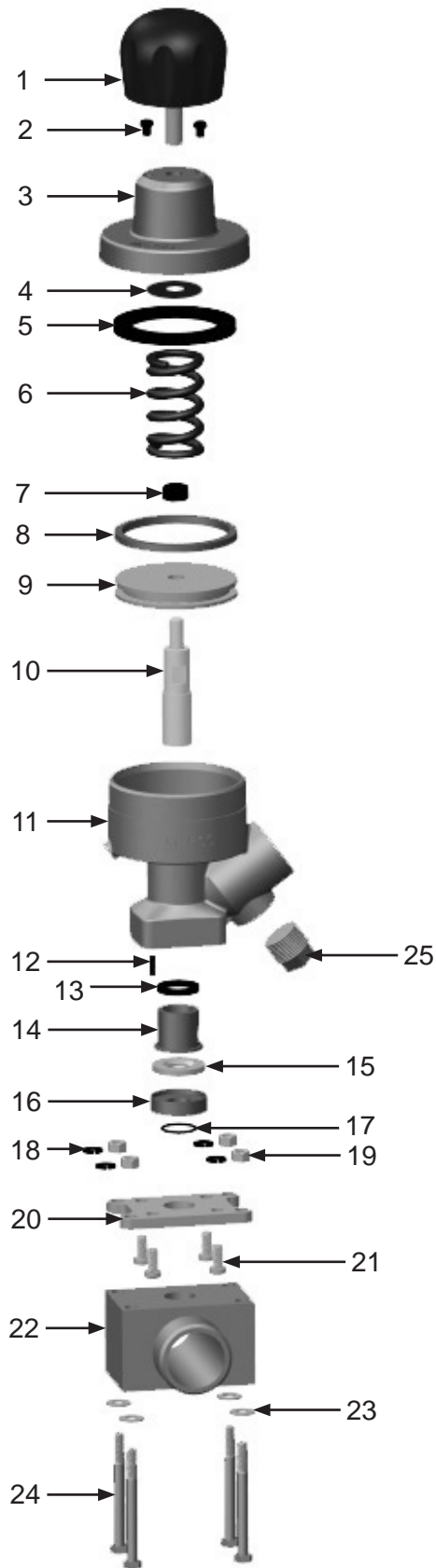
## PART NUMBERS AND SCHEMATICS

### Blastmaster® Maxum III Abrasive Metering Valve — Tungsten Carbide Sleeve — 2”

| Item #        | Part #          | Description  |
|---------------|-----------------|--|
| <b>Fig. 9</b> |                 |  |
| —             | <b>10105872</b> | <b>2” Blastmaster® Maxum III Abrasive Metering Valve – Tungsten Carbide Sleeve – Complete</b>        |
| 1             | 10101969        | Knob   |
| 2             | 1012905         | 1/8" Breather Muffler <i>(Two Required)</i>  |
| 3             | 1014211         | Cap  |
| 4             | 10106831        | Vibration Disc   |
| 5             | 1014212         | Bump Ring  |
| 6             | 1014213         | Spring   |
| 7             | 1014022         | 1/2–13 Nut   |
| 8             | 1014215         | Piston Seal  |
| 9             | 1014216         | Piston   |
| 10            | 1014217         | Tungsten Carbide Plunger   |
| 11            | 10101772        | Body   |
| 12            | 1014240         | 3/32" x 3/8" Groove Pin  |
| 13            | 10103977        | Heavy-Duty Plunger Seal  |
| 14            | 1014238         | Tungsten Carbide Sleeve  |
| 15            | 1014237         | Seat for Tungsten Carbide Sleeve   |
| 16            | 1014236         | Insert for Tungsten Carbide Sleeve   |
| 17            | 1014235         | O-ring for Tungsten Carbide Sleeve   |
| 18            | 10101936        | 3/8" Washer <i>(Four Required)</i>   |
| 19            | 10101938        | 3/8–16 Hex Nut <i>(Four Required)</i>  |
| 20            | 10105568        | Adapter Plate  |
| 21            | 10105570        | 3/8-16 X 3/4" Socket Head Cap Screw <i>(Four Required)</i>   |
| 22            | 10105567        | 2" Base, Through Hardened <i>(For use with 10105573)</i>   |
| 23            | 1014241         | 3/8" Washer <i>(Four Required)</i>   |
| 24            | 10105569        | 3/8–16 x 3-3/4" Bolt <i>(Four Required)</i>  |
| 25            | 1011901         | 1" Square Pipe Plug  |
| —             | 1014243         | Repair Kit with Tungsten Carbide Sleeve<br><i>(Includes Item #'s: 8, 10, 13, 14, 15, 16, and 17)</i> |
| —             | 1014221         | Soft Seal Kit<br><i>(Includes Item #'s: 8, 13, 15 and 17)</i>  |
| —             | 1091045         | Hazard Identification Tag  |

## PART NUMBERS AND SCHEMATICS

Figure 9: Blastmaster® Maxum III Abrasive Metering Valve — Tungsten Carbide Sleeve — 2”



## PART NUMBERS AND SCHEMATICS

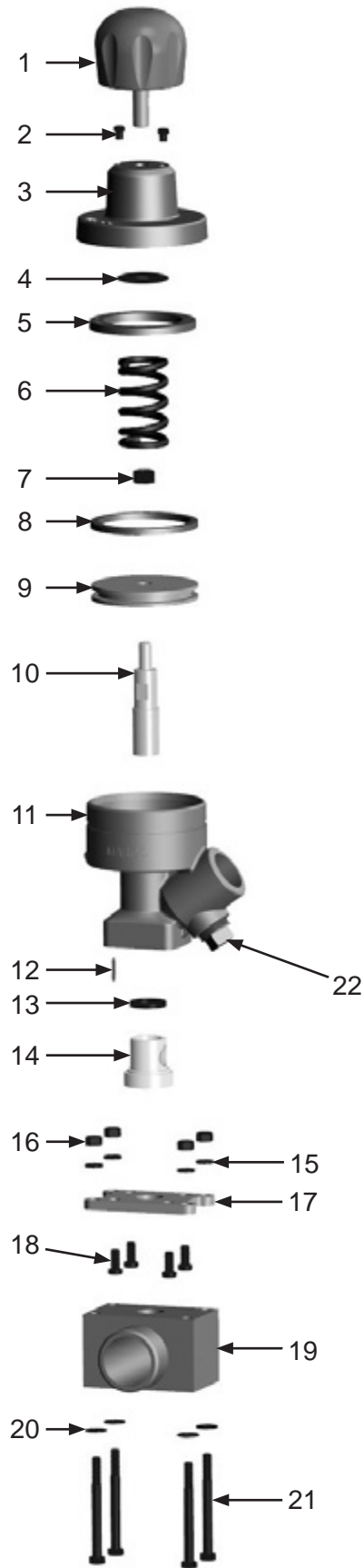
### Blastmaster® Maxum III Abrasive Metering Valve — Urethane Sleeve — 2”

| Item #         | Part #          | Description   |
|----------------|-----------------|---|
| <b>Fig. 10</b> |                 |   |
| —              | <b>10105573</b> | <b>2” Blastmaster® Maxum III Abrasive Metering Valve – Urethane Sleeve – Complete</b> |
| 1              | 10101969        | Knob  |
| 2              | 1012905         | 1/8" Breather Muffler <i>(Two Required)</i>   |
| 3              | 1014211         | Cap   |
| 4              | 10106831        | Vibration Disc  |
| 5              | 1014212         | Bump Ring   |
| 6              | 1014213         | Spring  |
| 7              | 1014022         | 1/2–13 Nut  |
| 8              | 1014215         | Piston Seal   |
| 9              | 1014216         | Piston  |
| 10             | 1014217         | Tungsten Carbide Plunger  |
| 11             | 10101772        | Body  |
| 12             | 1014240         | 3/32" x 3/8" Groove Pin   |
| 13             | 10103977        | Heavy-Duty Plunger Seal   |
| 14             | 1014229         | Urethane Sleeve   |
| 15             | 10101936        | 3/8" Washer <i>(Four Required)</i>  |
| 16             | 10101938        | 3/8–16 Hex Nut <i>(Four Required)</i>   |
| 17             | 10105568        | Adapter Plate   |
| 18             | 10105570        | 3/8-16 X 3/4" Socket Head Cap Screw <i>(Four Required)</i>                            |
| 19             | 10105567        | 2” Base, Through Hardened <i>(For use with 10105573)</i>                              |
| 20             | 1014241         | 3/8” Washer <i>(Four Required)</i>  |
| 21             | 10105569        | 3/8–16 x 3-3/4" Bolt <i>(Four Required)</i>   |
| 22             | 1011901         | 1" Square Pipe Plug   |
| —              | 1014244         | Repair Kit with Urethane Sleeve<br><i>(Includes Item #'s: 8, 10, 13 and 14)</i>       |
| —              | 1014222         | Soft Seal Kit<br><i>(Includes Item #'s: 8, 13, and 14)</i>                            |
| —              | 1091045         | Hazard Identification Tag   |



## PART NUMBERS AND SCHEMATICS

Figure 10: Blastmaster® Maxum III Abrasive Metering Valve — Urethane Sleeve — 2”



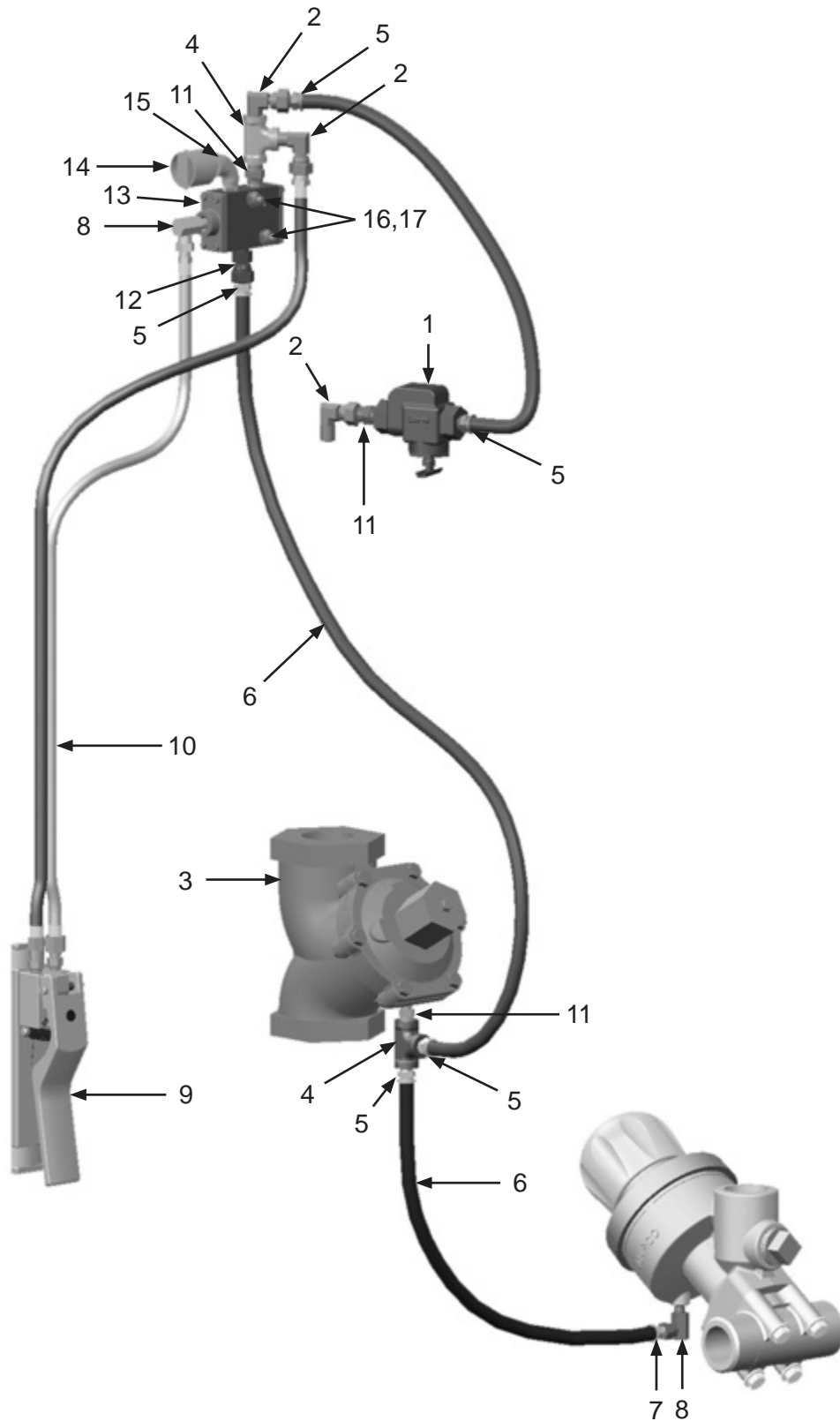
## PART NUMBERS AND SCHEMATICS

### Blastmaster® 130P Remote Control System

| Item #         | Part #          | Description  |
|----------------|-----------------|--|
| <b>Fig. 11</b> |                 |  |
| —              | <b>10103834</b> | <b>Blastmaster® 130P Remote Control System — Complete</b>                  |
| 1              | 10WS            | Watts Strainer   |
| 2              | 1012326         | 1/4" Swivel 90° Fitting <i>(Three Required)</i>                            |
| 3              | 1013600         | 1-1/2" NPT High-flow GateKeeper Air Valve <i>(See Figure 3)</i>            |
| 4              | 1011844         | 1/4" NPT Pipe Tee <i>(Two Required)</i>                                    |
| 5              | 10PAF025        | 1/4" Push-On Hose Fitting <i>(Five Required)</i>                           |
| 6              | 10AH025         | 1/4" Push-On Air Hose <i>(Per Foot)</i>                                    |
| 7              | 10PAF0125       | 1/8" Push-On Air Hose Fitting  |
| 8              | 1014239         | 1/8" 90° Swivel Fitting <i>(Two Required)</i>                              |
| 9              | 1015200         | Blastmaster® 152P Remote Control Switch                                    |
| 10             | 1016000         | 55 ft. of Pneumatic Control Line with 1/4" & 1/8" Male and Female Fittings |
| 11             | 1017019         | 1/4" x 1/4" Hex Nipple <i>(Three Required)</i>                             |
| 12             | 10SME025        | 1/4" Straight Swivel   |
| 13             | 1019000         | 190 Pneumatic Solenoid <i>(See Figure 5)</i>                               |
| 14             | 10DE025         | 1/4" NPT Dust Eliminator   |
| 15             | 1011824         | 1/4" Street Elbow  |
| 16             | 1019044         | 1/4"-20 x 1-3/4" Zinc Bolt <i>(Two Required)</i>                           |
| 17             | 1012323         | 1/4"-20 Zinc Lock Nut with Nylon <i>(Two Required)</i>                     |
| —              | 1091045         | Hazard Identification Tag  |

# PART NUMBERS AND SCHEMATICS

Figure 11: Blastmaster® 130P Remote Control System



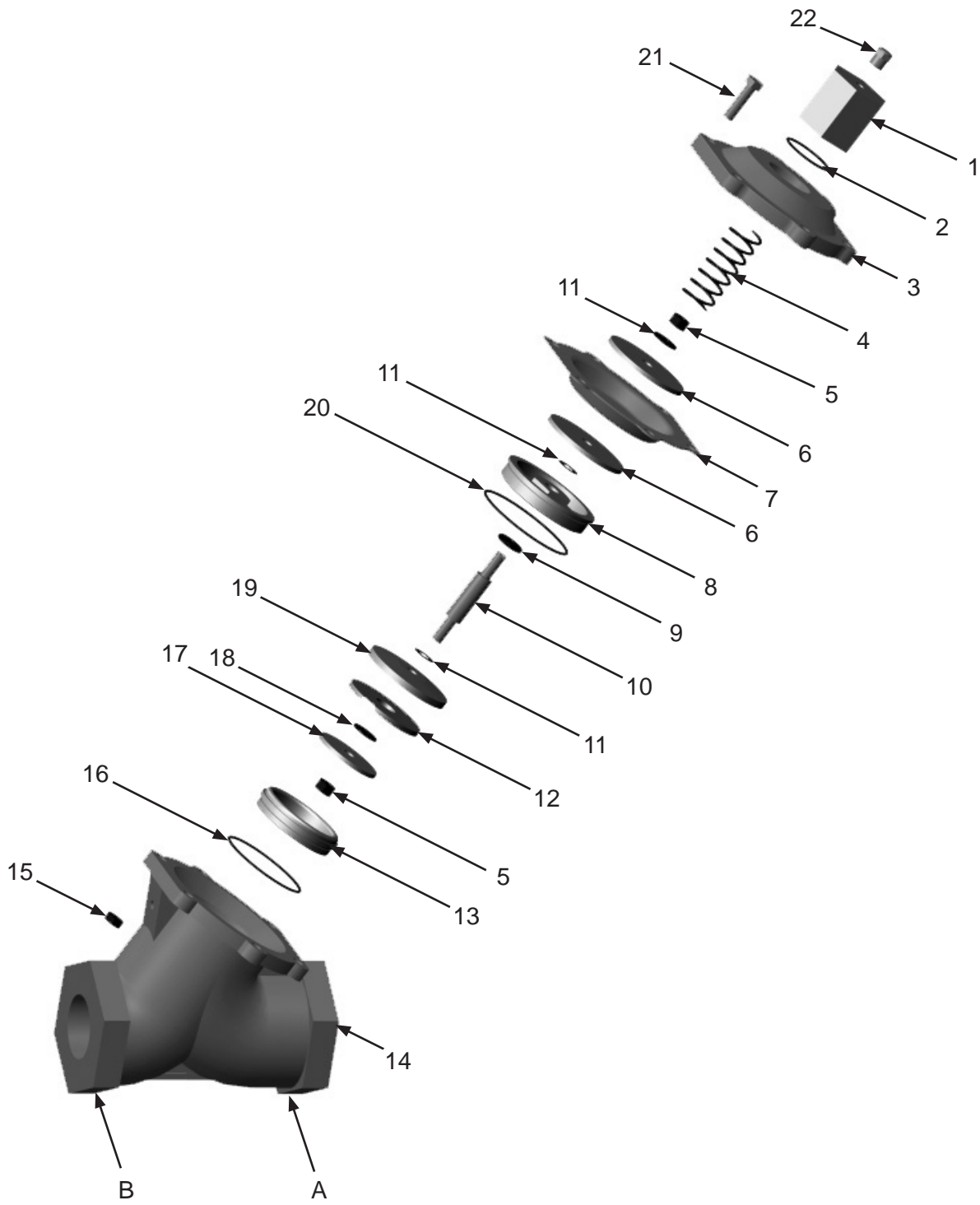
## PART NUMBERS AND SCHEMATICS

### 1-1/2" NPT High-flow GateKeeper Air Valve

| Item #         | Part #         | Description  |
|----------------|----------------|--|
| <b>Fig. 12</b> |                |  |
| —              | <b>1013600</b> | <b>1-1/2" NPT High-flow GateKeeper Air Valve</b>   |
| 1              | 1013322        | Spring Retainer  |
| 2              | 1013326        | O-ring   |
| 3              | 1013312        | Cap  |
| 4              | 1013323        | Spring   |
| 5              | 1013313        | Lock Nut   |
| 6              | 1013315        | Diaphragm Plate <i>(two required)</i>  |
| 7              | 1013303        | Diaphragm  |
| 8              | 1013305        | Retainer Bushing   |
| 9              | 1013306        | O-ring   |
| 10             | 1013318        | Shaft  |
| 11             | 1013302        | Gasket <i>(two required)</i>   |
| 12             | 1013320        | Disc   |
| 13             | 1013311        | Lock Nut   |
| 13             | 1013309        | Seat   |
| 14             | 1013328        | Body   |
| 15             | 1013316        | Nut <i>(six required)</i>  |
| 16             | 1013308        | Seat O-Ring  |
| 17             | 1013310        | Disc Plate   |
| 18             | 1013327        | Brass Washer   |
| 19             | 1013307        | Disc Retainer  |
| 20             | 1013304        | O-ring   |
| 21             | 1013314        | Cap Screw <i>(six required)</i>  |
| 22             | 1012905        | 1/8" Breather Muffler  |
| A              | 1091050        | Sticker - Air Inlet  |
| B              | 1091051        | Sticker - Air Outlet   |
| —              | 1013301        | 1-1/2" NPT High-flow GateKeeper Air Valve Service Kit<br><i>(Includes Item #'s: 5, 7, 9, 11, 12, 17, and 20)</i> |

# PART NUMBERS AND SCHEMATICS

Figure 12: 1-1/2" NPT High-flow GateKeeper Air Valve



## PART NUMBERS AND SCHEMATICS

### 12-Volt DC Blastmaster® 130E Remote Control System

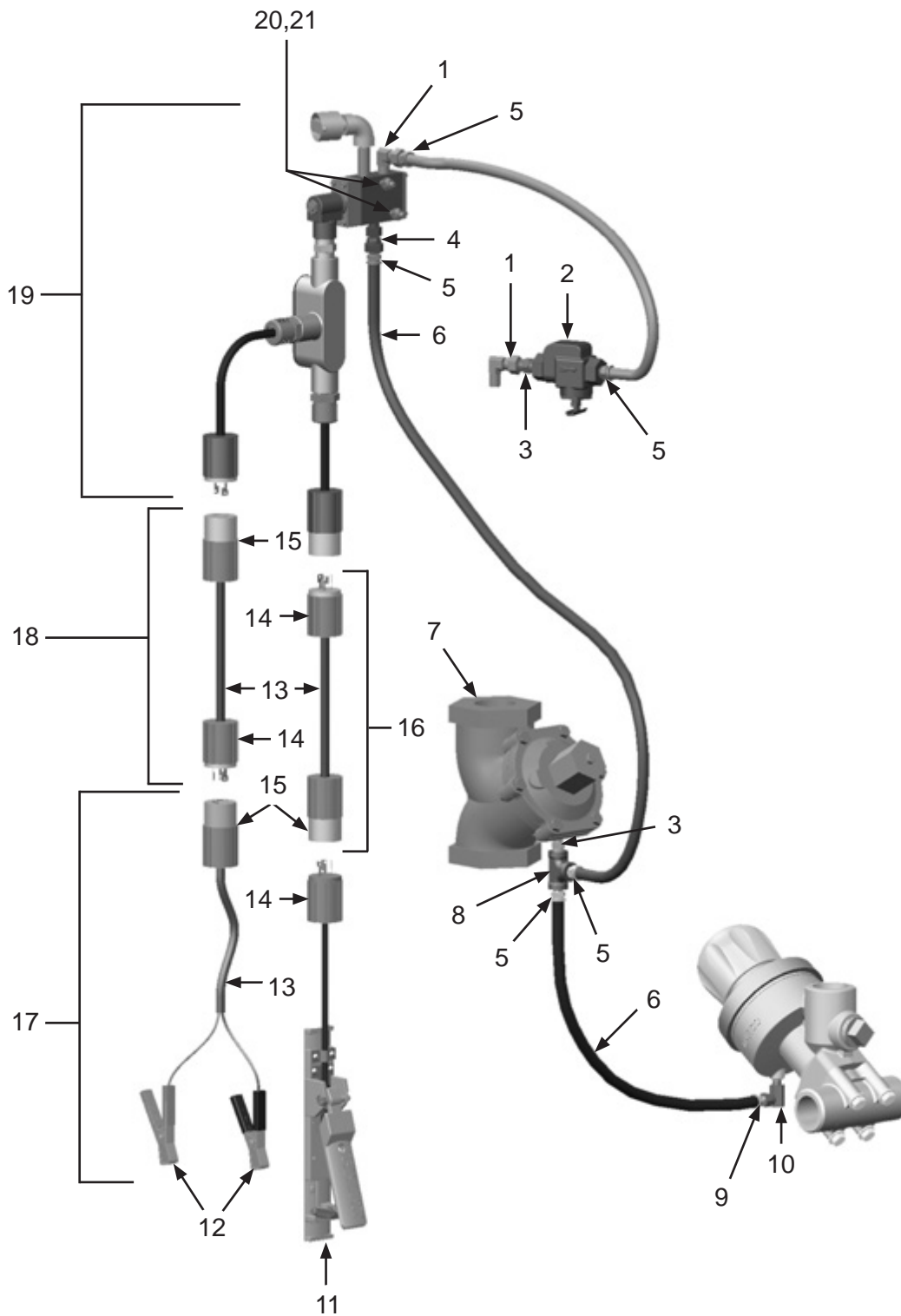
**Item # Part # Description**

**Fig. 13**

|    |                 |  |
|----|-----------------|--|
| —  | <b>10103835</b> | <b>12-Volt DC Blastmaster® 130E Remote Control System – Complete</b>   |
| 1  | 1012326         | 1/4" NPT Swivel 90° Fitting <i>(Two Required)</i>  |
| 2  | 10WS            | Watts Strainer   |
| 3  | 1017019         | 1/4" NPT Hex Nipple <i>(Two Required)</i>  |
| 4  | 10SME025        | 1/4" Straight Swivel   |
| 5  | 10PAF025        | 1/4" NPT x 1/4" Barb Push-On Hose Fitting <i>(Five Required)</i>   |
| 6  | 10AH025         | 1/4" Push-On Air Hose <i>(Per Foot)</i>  |
| 7  | 1013600         | 1-1/2" NPT High-flow GateKeeper Air Valve <i>(See Figure 12)</i>   |
| 8  | 1011844         | 1/4" NPT Pipe Tee  |
| 9  | 10PAF0125       | 1/8" NPT x 1/4" Barb Push-On Air Hose Fitting  |
| 10 | 1014239         | 1/8" 90° Swivel Fitting  |
| 11 | 1015100         | Blastmaster® 151E Remote Control Switch  |
| 12 | 1030718         | Battery Clamps – pair  |
| 13 | 1015540         | 16/2 Power Cord <i>(Per Foot)</i>  |
| 14 | 1015555         | 3-prong Twist-Lock Plug – Male   |
| 15 | 1015556         | 3-prong Twist-Lock Plug – Female   |
| 16 | 1015545         | 50' of 16/2 SJ Power Cord with 3-prong Twist-Lock Plugs<br><i>(Includes Item #'s: 15, 16, and 14 (Quantity of 50 Feet))</i>    |
| 17 | 1015544         | Battery Clamp Kit with 3-prong Twist-Lock Plug Installed<br><i>(Includes Item #'s: 13, 16, and 14 (Quantity of Two Feet))</i>  |
| 18 | 1015546         | 16/2 SJ Power Cord with 3-prong Twist-Lock Plugs Installed<br><i>(Includes Item #'s: 15, 16, and 14 (Quantity of 25 Feet))</i> |
| 19 | 1019051         | 12-Volt DC 190 Electric Control Assembly <i>(See Figure 3)</i>   |
| 20 | 1019044         | 1/4"-20 x 1-3/4" Zinc Bolt <i>(Two Required)</i>   |
| 21 | 1012323         | 1/4"-20 Zinc Lock Nut with Nylon <i>(Two Required)</i>   |
| —  | 1091045         | Hazard Identification Tag  |

# PART NUMBERS AND SCHEMATICS

Figure 13: 12-Volt DC Blastmaster® 130E Remote Control System



## PART NUMBERS AND SCHEMATICS

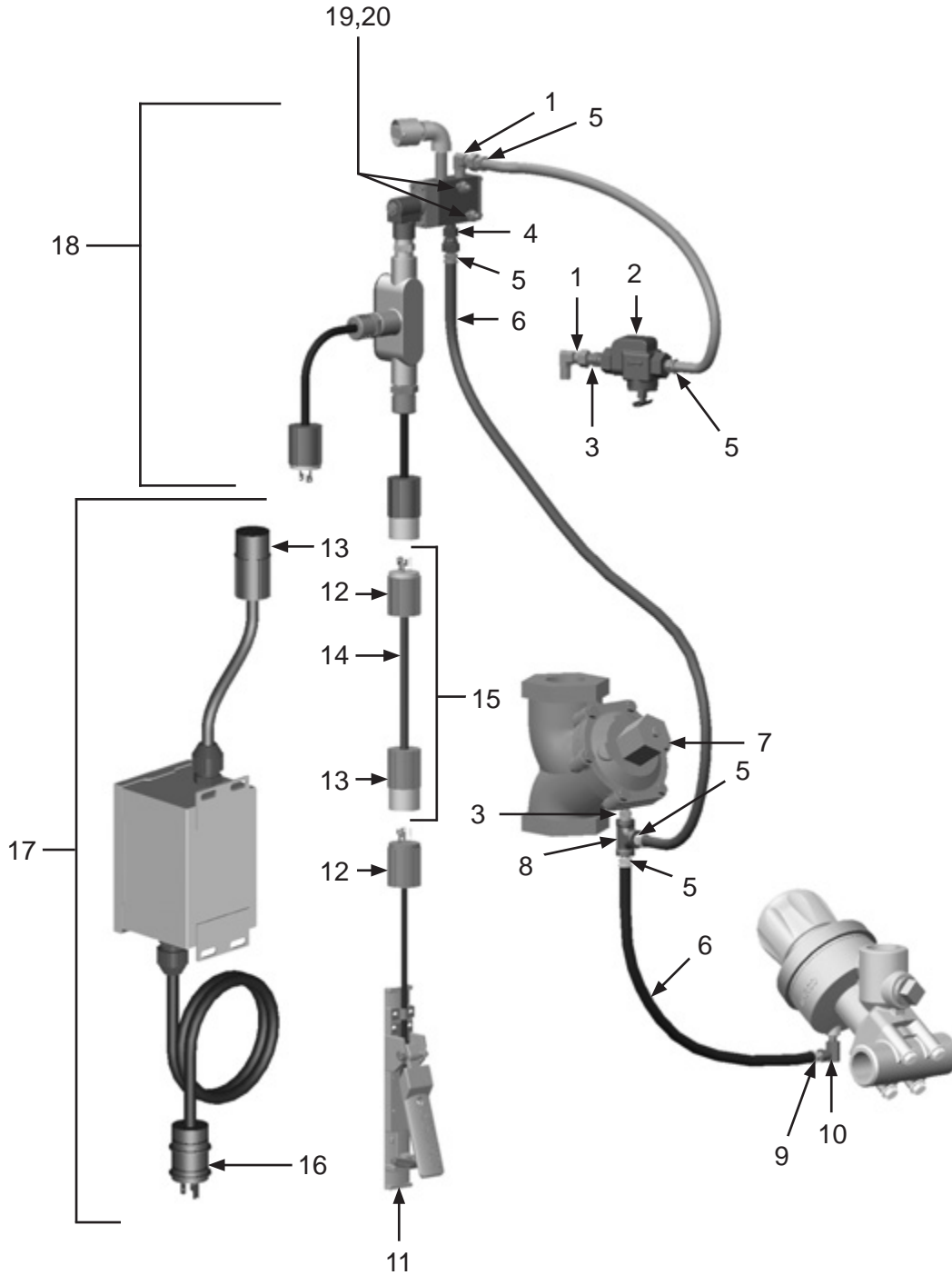
### 120-Volt AC Blastmaster® 130E Remote Control System

| Item #         | Part #          | Description  |
|----------------|-----------------|--|
| <b>Fig. 14</b> |                 |  |
| —              | <b>10103836</b> | <b>120-Volt AC Blastmaster® 130E Remote Control System – Complete</b>  |
| 1              | 1012326         | 1/4" NPT Swivel 90° Fitting <i>(Two Required)</i>  |
| 2              | 10WS            | Watts Strainer   |
| 3              | 1017019         | 1/4" NPT Hex Nipple <i>(Two Required)</i>  |
| 4              | 10SME025        | 1/4" Straight Swivel   |
| 5              | 10PAF025        | 1/4" NPT x 1/4" Barb Push-On Hose Fitting <i>(Five Required)</i>   |
| 6              | 10AH025         | 1/4" Push-On Air Hose <i>(Per Foot)</i>  |
| 7              | 1013600         | 1-1/2" NPT High-flow GateKeeper Air Valve <i>(See Figure 12)</i>   |
| 8              | 1011844         | 1/4" NPT Pipe Tee  |
| 9              | 10PAF0125       | 1/8" NPT x 1/4" Barb Push-On Air Hose Fitting  |
| 10             | 1014239         | 1/8" 90° Swivel Fitting  |
| 11             | 1015100         | Blastmaster® 151E Remote Control Switch  |
| 12             | 1015555         | 3-Prong Twist-Lock Plug – Male <i>(Two Required)</i>   |
| 13             | 1015556         | 3-Prong Twist-Lock Plug – Female   |
| 14             | 1015540         | 16/2 Power Cord <i>(Per Foot)</i>  |
| 15             | 1015545         | 50' of 16/2 SJ Power Cord with 3-prong Twist-Lock Plugs Installed<br><i>(Includes Item #'s: 12, 13, and 14 (Quantity of 50 Feet))</i>        |
| 16             | 1030026         | 120-Volt 3-prong Standard Male Plug  |
| 17             | 1030020         | 2 Amp 120-Volt AC to 12-Volt AC Power Converter for Single Outlet Configurations<br><i>(Includes Item #'s: 13 and 16) (See Figure 15a)</i>   |
| —              | 10100713        | 3 Amp 120-Volt AC to 12-Volt AC Power Converter for Multiple Outlet Configurations<br><i>(Includes Item #'s: 13 and 16) (See Figure 15b)</i> |
| 18             | 1019052         | 12-Volt DC 190 Electric Control Assembly <i>(See Figure 18)</i>  |
| 19             | 1019044         | 1/4"-20 x 1-3/4" Zinc Bolt <i>(Two Required)</i>   |
| 20             | 1012323         | 1/4"-20 Zinc Lock Nut with Nylon <i>(Two Required)</i>   |
| —              | 1091045         | Hazard Identification Tag  |



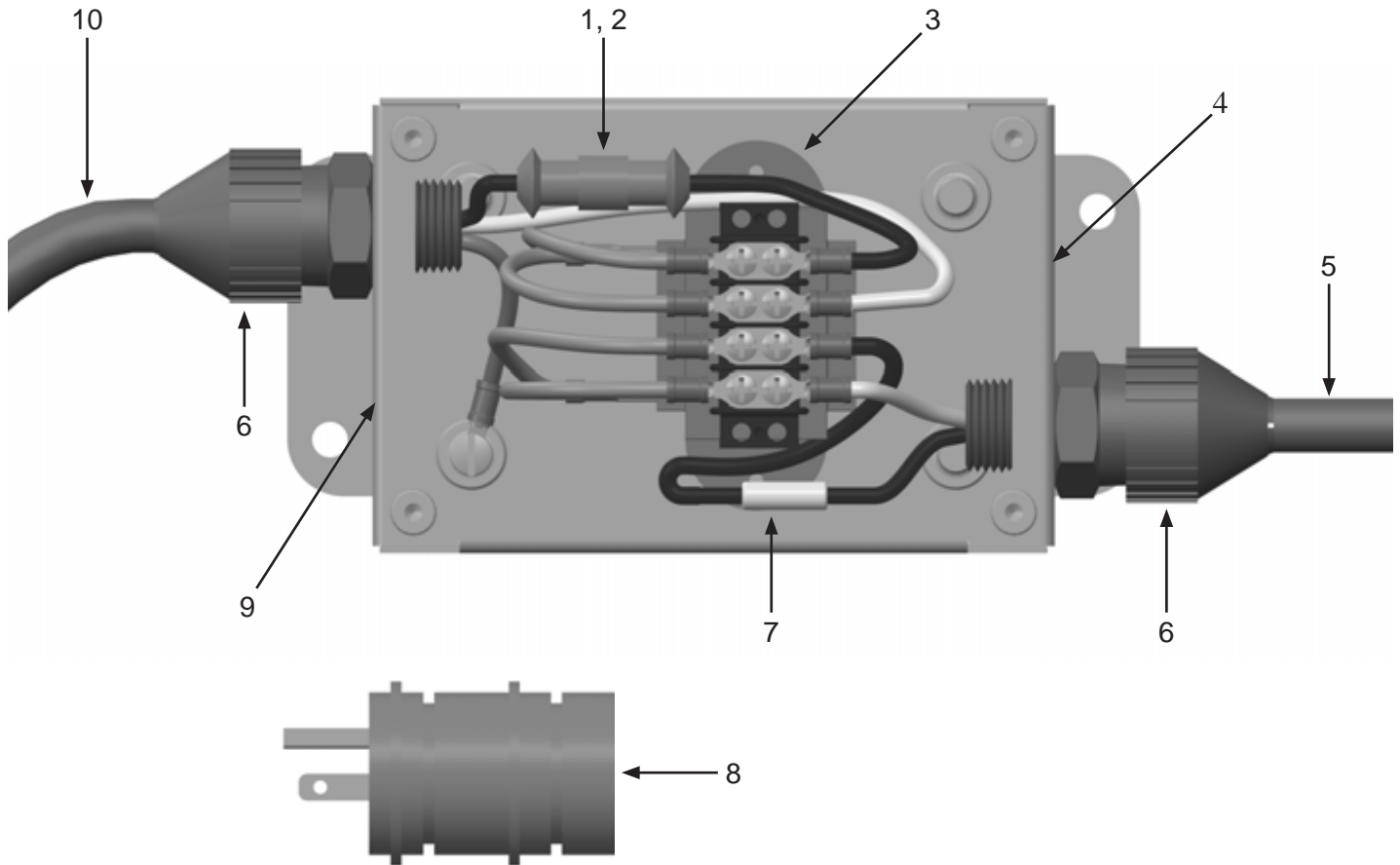
# PART NUMBERS AND SCHEMATICS

Figure 14: 120-Volt AC Blastmaster® 130E Remote Control System



## PART NUMBERS AND SCHEMATICS

**Figure 15a: Blastmaster® 120-Volt AC to 12-Volt AC Power Converter For Single-Outlet Configurations**



| Item # | Part # | Description |
|--------|--------|-------------|
|--------|--------|-------------|

**Fig. 15a**

|   |                |  |
|---|----------------|--|
| — | <b>1030020</b> | <b>Blastmaster® 120-Volt AC to 12-Volt AC Power Converter – For Single-Outlet Configurations</b> |
|---|----------------|--|

|   |         |            |
|---|---------|------------|
| 1 | 1030024 | 2 Amp Fuse |
|---|---------|------------|

|   |         |                     |
|---|---------|---------------------|
| 2 | 1030023 | In-Line Fuse Holder |
|---|---------|---------------------|

|   |         |  |
|---|---------|--|
| 3 | 1030022 | Transformer – Blastmaster® 120-Volt AC to 12-Volt AC Power Converter |
|---|---------|--|

|   |         |                                      |
|---|---------|--------------------------------------|
| 4 | 1091067 | Power-Out Decal ( <i>Not Shown</i> ) |
|---|---------|--------------------------------------|

|   |         |   |
|---|---------|---|
| 5 | 1030013 | 14/2 SEOW Electric Cord ( <i>Per Foot</i> ) |
|---|---------|---|

|   |         |                                       |
|---|---------|---------------------------------------|
| 6 | 1030025 | Strain Relief ( <i>Two Required</i> ) |
|---|---------|---------------------------------------|

|   |         |          |
|---|---------|----------|
| 7 | 1030021 | Resistor |
|---|---------|----------|

|   |         |                                  |
|---|---------|----------------------------------|
| 8 | 1030026 | 3-Prong, 120-Volt AC Plug – Male |
|---|---------|----------------------------------|

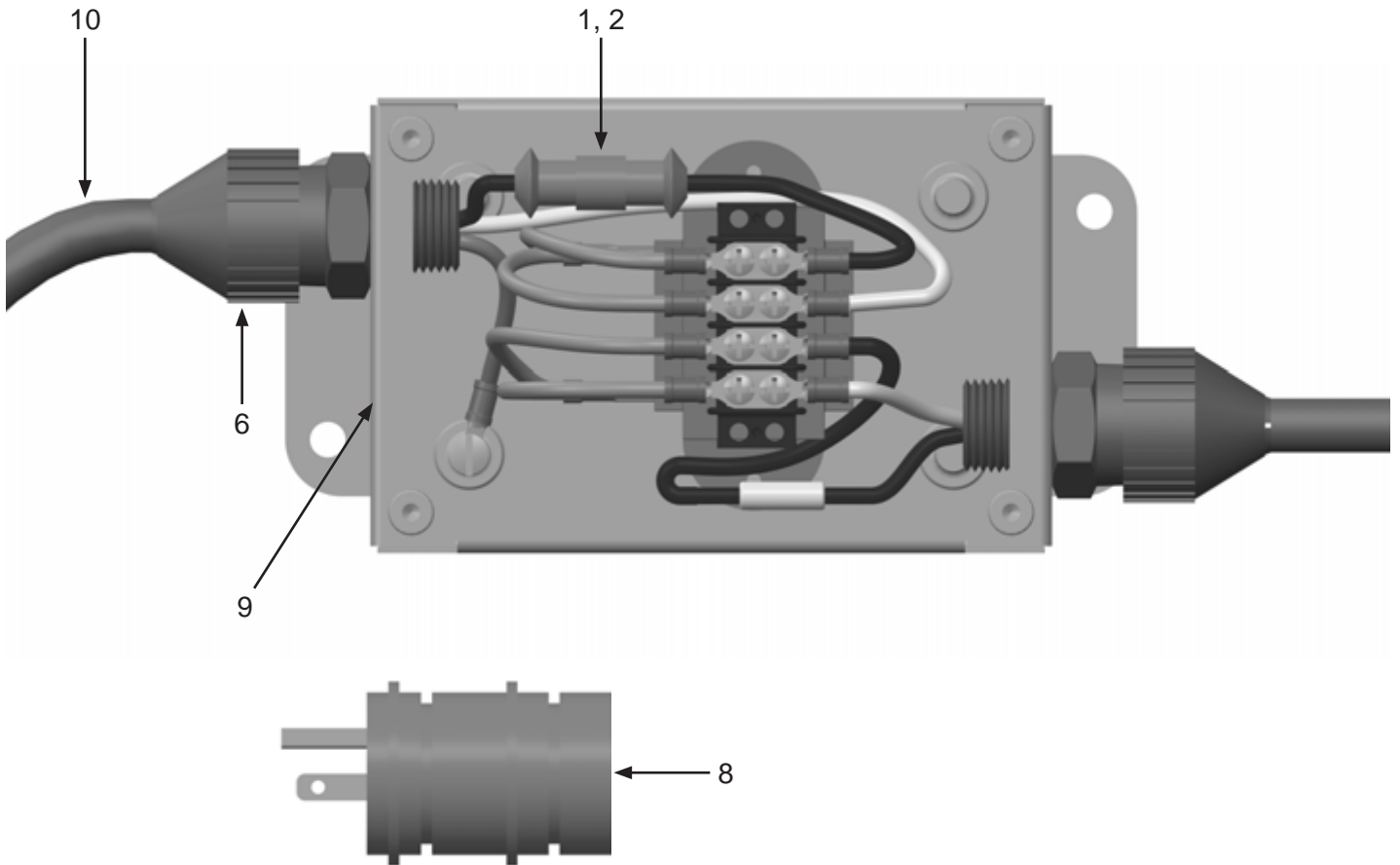
|   |         |                                     |
|---|---------|-------------------------------------|
| 9 | 1092014 | Power-In Decal ( <i>Not Shown</i> ) |
|---|---------|-------------------------------------|

|    |         |   |
|----|---------|---|
| 10 | 1015550 | 14/3 SEOW Electrical Cord ( <i>Per Foot</i> ) |
|----|---------|---|

|   |         |                             |
|---|---------|-----------------------------|
| — | 1091063 | Hazard Identification Decal |
|---|---------|-----------------------------|

## PART NUMBERS AND SCHEMATICS

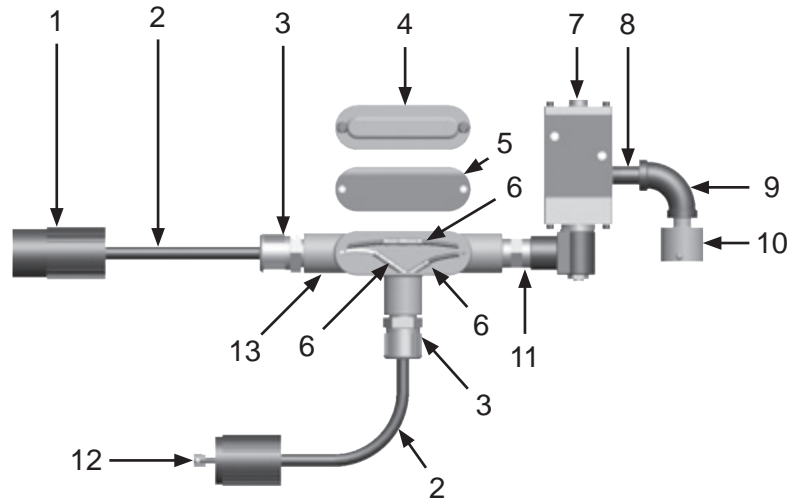
**Figure 15b: Blastmaster® 120-Volt AC to 12-Volt AC Power Converter For Multiple Outlet Configurations**



| Item #          | Part #          | Description  |
|-----------------|-----------------|--|
| <b>Fig. 15b</b> |                 |  |
| —               | <b>10100713</b> | <b>Blastmaster® 120-Volt AC to 12-Volt AC Power Converter – For Multiple Outlet Configurations</b> |
| 1               | 1030123         | 3 Amp Fuse   |
| 2               | 1030023         | In-Line Fuse Holder  |
| 3               | 1030022         | Transformer – Blastmaster® 120-Volt AC to 12-Volt AC Power Converter                               |
| 4               | 1091067         | Power-Out Decal ( <i>Not Shown</i> )   |
| 5               | 1030013         | 14/2 SEOW Power Cord ( <i>Per Foot</i> )   |
| 6               | 1030025         | Strain Relief ( <i>Two Required</i> )  |
| 7               | 1030021         | Resistor   |
| 8               | 1030026         | 3-Prong, 120-Volt AC Plug – Male   |
| 9               | 1092014         | Power-In Decal ( <i>Not Shown</i> )  |
| 10              | 1015550         | 14/3 SEOW Electrical Cord ( <i>Per Foot</i> )  |
| —               | 1091063         | Hazard Identification Decal  |

## PART NUMBERS AND SCHEMATICS

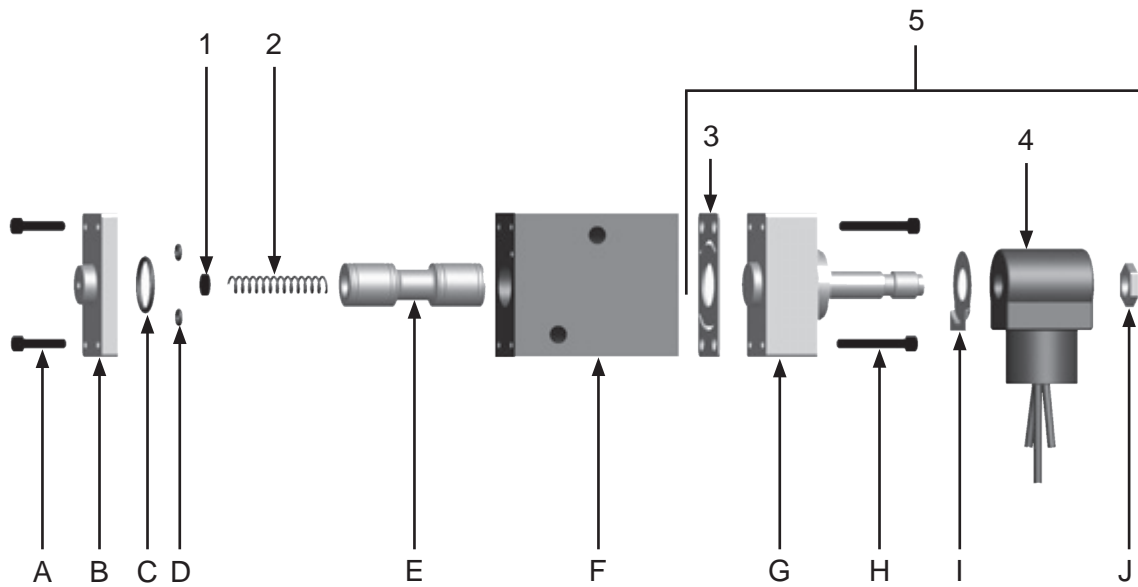
Figure 16: 12-Volt DC 190 Electric Control Assembly



| Item #         | Part #         | Description  |
|----------------|----------------|--|
| <b>Fig. 16</b> |                |  |
| —              | <b>1019051</b> | <b>12-Volt DC 190 Electric Control Assembly – Complete</b> |
| 1              | 1015556        | 3-Prong Twist-Lock Plug – Female                           |
| 2              | 1015540        | 16/2 Power Cord (Per Foot)                                 |
| 3              | 1019021        | Cord Grip ( <i>Two Required</i> )                          |
| 4              | 1019022        | Conduit Box Cover  |
| 5              | 1019023        | Conduit Box Cover Gasket                                   |
| 6              | 1030028        | Butt Splicer ( <i>Four Required</i> )                      |
| 7              | 1019010        | 12-Volt DC Electric Solenoid – Complete                    |
| 8              | 1011217        | 1/4" x 2" Pipe Nipple                                      |
| 9              | 1011832        | 1/4" NPT 90° Pipe Nipple                                   |
| 10             | 10DE025        | Dust Eliminator  |
| 11             | 20100677       | 1/2" x 1/2" NPT Hex Nipple                                 |
| 12             | 1015555        | 3-Prong Twist-Lock Plug – Male                             |
| 13             | 1019020        | 1/2" Tee Conduit Box                                       |

## PART NUMBERS AND SCHEMATICS

Figure 17: 12-Volt DC 190 Electric Solenoid



| Item # | Part # | Description |
|--------|--------|-------------|
|--------|--------|-------------|

Fig. 17

|   |                |  |
|---|----------------|--|
| — | <b>1019010</b> | <b>12-Volt DC 190 Electric Solenoid — Normally-closed — Complete</b> |
|---|----------------|--|

|   |         |             |
|---|---------|-------------|
| 1 | 1019029 | Felt Filter |
|---|---------|-------------|

|   |         |        |
|---|---------|--------|
| 2 | 1019032 | Spring |
|---|---------|--------|

|   |         |        |
|---|---------|--------|
| 3 | 1019033 | Gasket |
|---|---------|--------|

|   |         |                 |
|---|---------|-----------------|
| 4 | 1019039 | 12-Volt DC Coil |
|---|---------|-----------------|

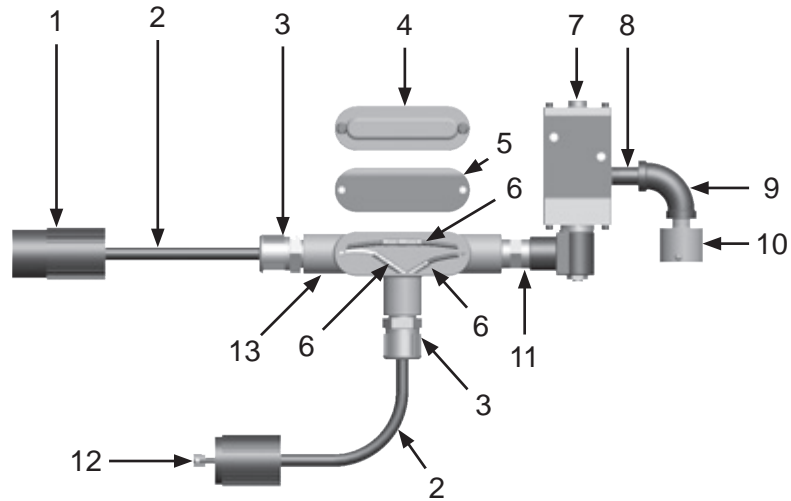
|   |         |  |
|---|---------|--|
| 5 | 1019034 | 12-Volt DC Operator Assembly<br>(Includes Items: #3, #4, G, H, I, and J) |
|---|---------|--|

|   |         |   |
|---|---------|---|
| — | 1019030 | Electric Solenoid Repair Kit<br>(Includes Items: #1, #2, #3, C, D, and E) |
|---|---------|---|

\* Items A–J are not available individually

## PART NUMBERS AND SCHEMATICS

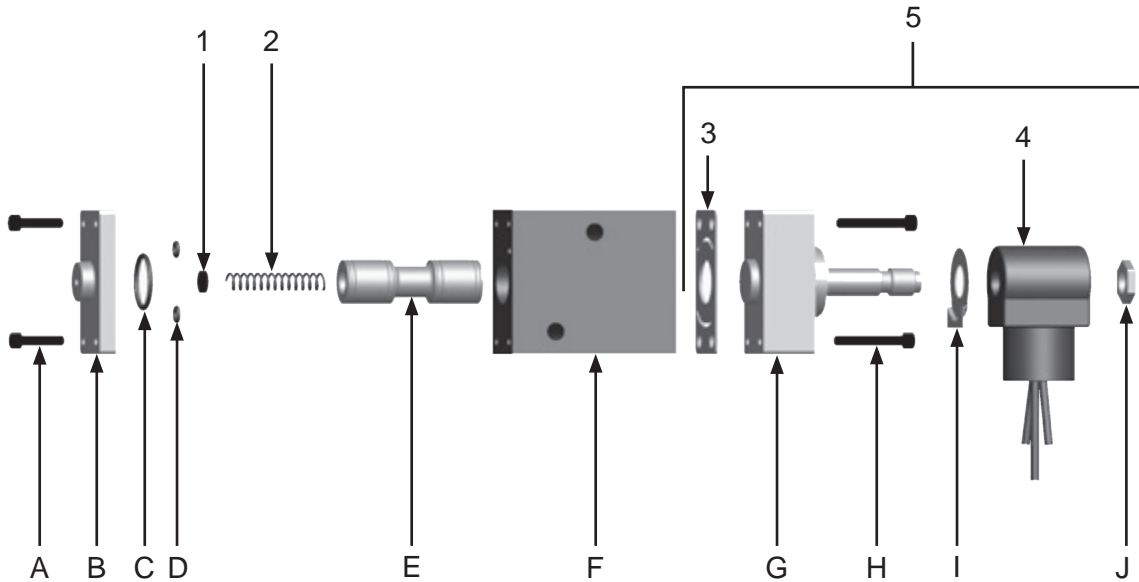
Figure 18: 12-Volt AC 190 Electric Control Assembly



| Item #         | Part #         | Description  |
|----------------|----------------|--|
| <b>Fig. 18</b> |                |  |
| —              | <b>1019052</b> | <b>12-Volt AC 190 Electric Control Assembly – Complete</b> |
| 1              | 1015556        | 3-Prong Twist-Lock Plug – Female                           |
| 2              | 1015540        | 16/2 Power Cord (Per Foot)                                 |
| 3              | 1019021        | Cord Grip ( <i>Two Required</i> )                          |
| 4              | 1019022        | Conduit Box Cover  |
| 5              | 1019023        | Conduit Box Cover Gasket                                   |
| 6              | 1030028        | Butt Splicer ( <i>Four Required</i> )                      |
| 7              | 1019011        | 12-Volt AC Electric Solenoid – Complete                    |
| 8              | 1011217        | 1/4" x 2" Pipe Nipple                                      |
| 9              | 1011832        | 1/4" NPT 90° Pipe Nipple                                   |
| 10             | 10DE025        | Dust Eliminator  |
| 11             | 20100677       | 1/2" x 1/2" NPT Hex Nipple                                 |
| 12             | 1015555        | 3-Prong Twist-Lock Plug – Male                             |
| 13             | 1019020        | 1/2" Tee Conduit Box                                       |

## PART NUMBERS AND SCHEMATICS

Figure 19: 12-Volt AC 190 Electric Solenoid

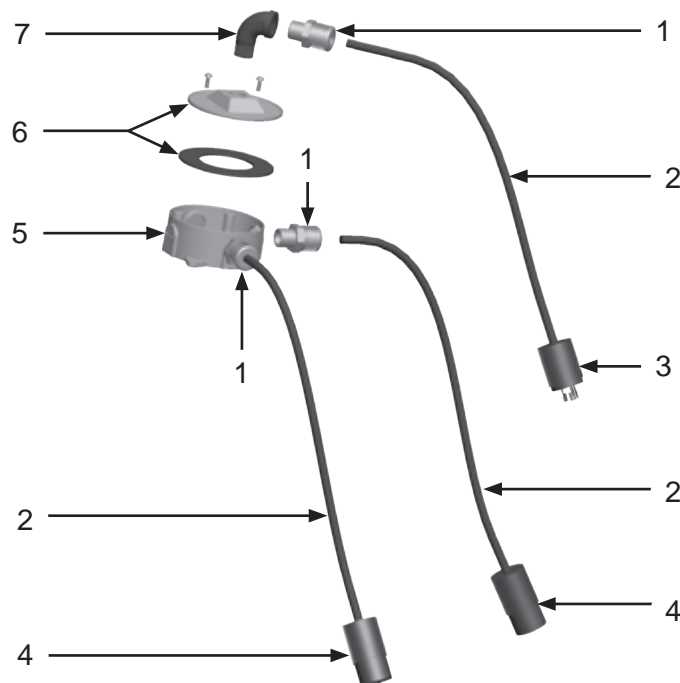
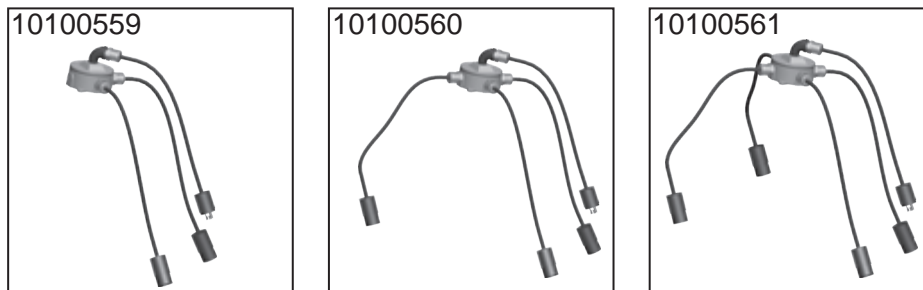


| Item #                                     | Part #         | Description  |
|--|----------------|--|
| Fig. 19                                    |                |  |
| —  | <b>1019011</b> | <b>12-Volt AC 190 Electric Solenoid – Complete</b>                                   |
| 1  | 1019029        | Felt Filter  |
| 2  | 1019032        | Spring   |
| 3  | 1019033        | Gasket   |
| 4  | 1019040        | 12-Volt AC Coil  |
| 5  | 1019035        | 12-Volt AC Electric Operator Assembly<br>(Includes Items: #3, #4, G, H, I, and J)    |
| —  | 1019030        | 12-Volt AC Electric Solenoid Repair Kit<br>(Includes Items: #1, #2, #3, C, D, and E) |
| * Items A–J are not available individually |                |  |

# PART NUMBERS AND SCHEMATICS

## Power Distribution Boxes

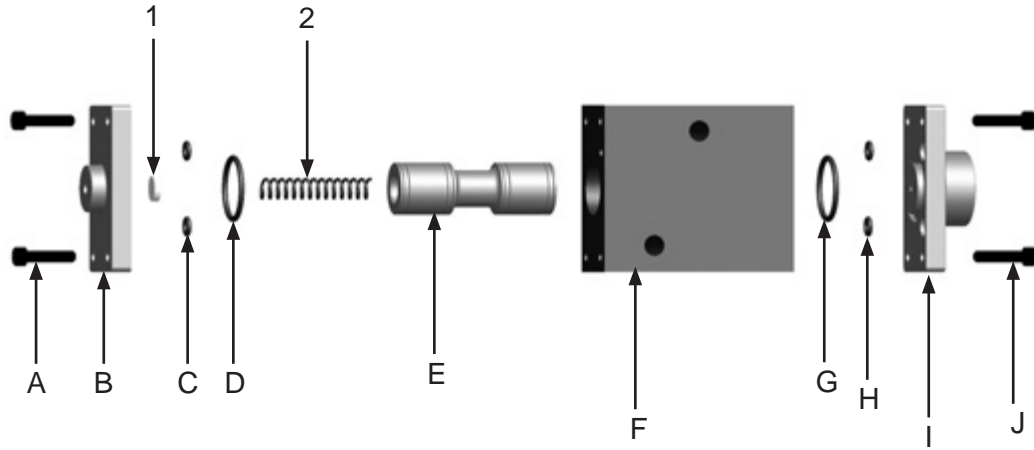
| Item #         | Part #   | Description  |
|----------------|----------|--|
| <b>Fig. 20</b> |          |  |
| —              | 10100559 | 2-Outlet Power Distribution Box                          |
| —              | 10100560 | 3-Outlet Power Distribution Box                          |
| —              | 10100561 | 4-Outlet Power Distribution Box                          |
| 1              | 1019021  | Cord Grip (One Required per Outlet)                      |
| 2              | 1015540  | 16/2 Electric Cord (Sold per Foot)                       |
| 3              | 1015555  | 3-Prong Male Twist-Lock Plug                             |
| 4              | 1015556  | 3-Prong Female Twist-Lock Plug (One Required per Outlet) |
| 5              | 10100495 | 5-Outlet Conduit Box                                     |
| 6              | 10100496 | Conduit Box Cover<br>(Includes: Gasket and Screws)       |
| 7              | 1011819  | 1/2" Street Elbow  |
| —              | 1030028  | Butt Splicer (Not Shown)                                 |
| —              | 10100562 | Inline Fuse Block (Not Shown)                            |
| —              | 10100563 | 5-Amp Inline Fuse (Not Shown)                            |





## PART NUMBERS AND SCHEMATICS

**Figure 21: 190 Pneumatic Solenoid**



| Item # | Part # | Description |
|--------|--------|-------------|
|--------|--------|-------------|

Fig. 21

|   |                |  |
|---|----------------|--|
| — | <b>1019000</b> | <b>190 Pneumatic Solenoid Normally—Closed — Complete</b> |
|---|----------------|--|

|   |         |             |
|---|---------|-------------|
| 1 | 1019029 | Felt Filter |
|---|---------|-------------|

|   |         |        |
|---|---------|--------|
| 2 | 1019032 | Spring |
|---|---------|--------|

|   |         |   |
|---|---------|---|
| 3 | 1019027 | Pneumatic Solenoid Operator Assembly<br><i>(Includes Items: G, H, I, and J)</i> |
|---|---------|---|

|   |         |   |
|---|---------|---|
| 4 | 1019028 | Pneumatic Solenoid Repair Kit<br><i>(Includes Items: #1, #2, C, D, E, G, and H)</i> |
|---|---------|---|

*\* Items A–J are not available individually*

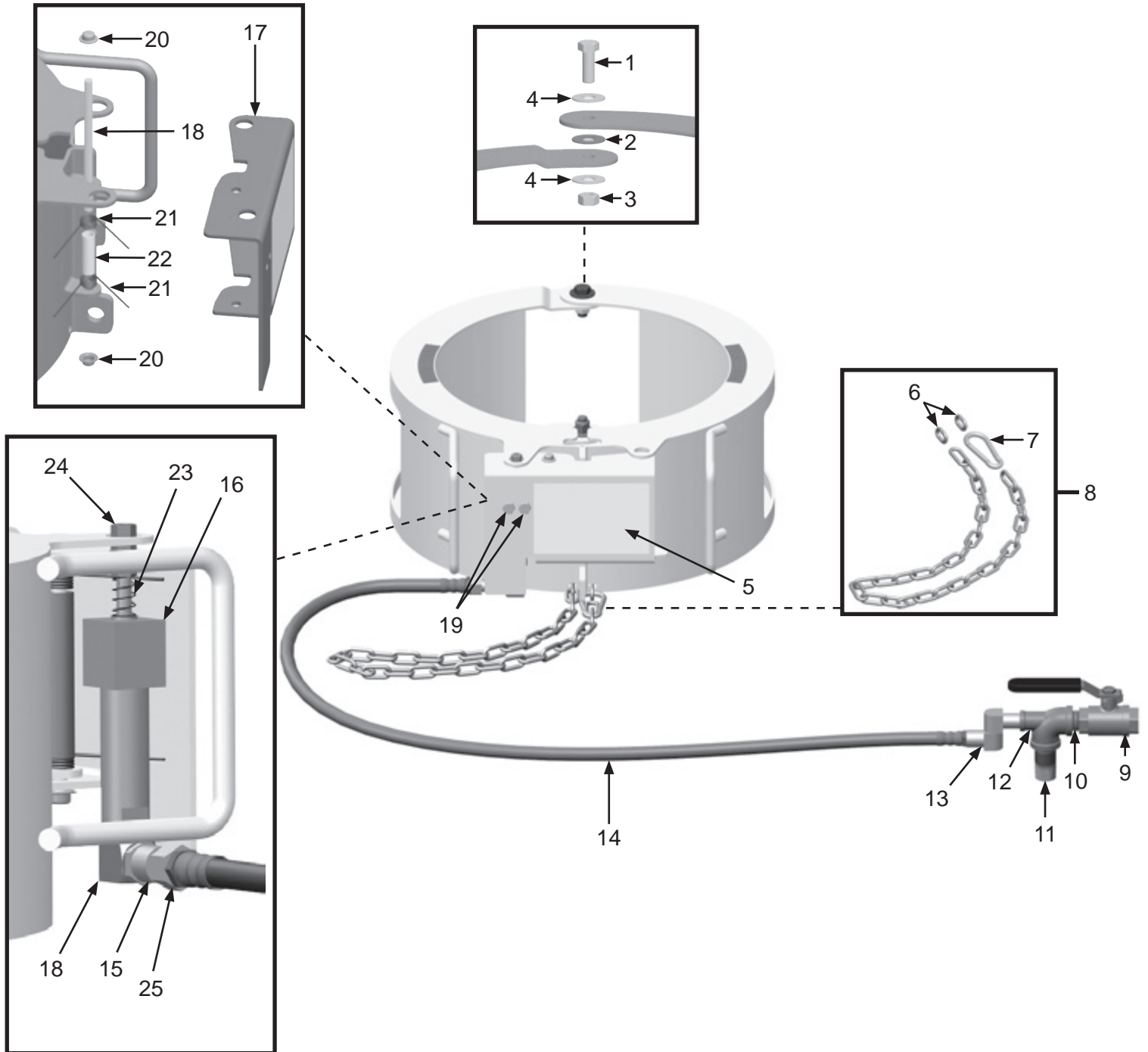
## PART NUMBERS AND SCHEMATICS

### Blastmaster® Camlock Closure Lockout Device

| Item#          | Part#           | Description   |
|----------------|-----------------|---|
| <b>Fig. 22</b> |                 |   |
| —              | <b>10102326</b> | <b>Blastmaster® Camlock Closure Lockout Device – Complete</b>                   |
| 1              | 1011747         | 3/8-16 x 1" Bolt <i>(Two Required)</i>  |
| 2              | 1012064         | 3/8" Nylon Washer <i>(Two Required)</i>   |
| 3              | 20100138        | 3/8-16 Lock Nut <i>(Two Required)</i>   |
| 4              | 10102331        | 3/8" Washer <i>(Four Required)</i>  |
| 5              | 1091106         | Hazard Identification Decal   |
| 6              | 10102338        | Split Link <i>(Two Required)</i>  |
| 7              | 10102410        | Carabiner   |
| 8              | 10102419        | Chain Assembly<br><i>Includes Items: #6 (Quantity of Two), #7, and Chain</i>    |
| 9              | 10L363          | 1/2" NPT Brass Full Port Ball Valve   |
| 10             | 10L803035       | 1/2" NPT Close Nipple   |
| 11             | 10L803038       | 1/2" NPT x 2" Pipe Nipple   |
| 12             | 10102337        | 1/2" NPT 90° Elbow with 1/4" NPT Side-out                                       |
| 13             | 10102576        | 1/4" Swivel Connector   |
| 14             | 10102336        | 1/4" I.D. Air Hose Assembly   |
| 15             | 10102575        | 1/4" (M) x 1/4" (F) Swivel Hose End   |
| 16             | 10102333        | Bimba Cylinder For Hatch Lock   |
| 17             | 10102320        | Latch Handle<br><i>Includes Item #5</i>   |
| 18             | 10106786        | 1/8" (M) X 1/4" (F) Street Elbow  |
| 19             | 10102391        | 1/4-20 x 1/2" Bolt <i>(Two Required)</i>  |
| 20             | 10102325        | 1/4" Cap Nut <i>(Two Required)</i>  |
| 21             | 10102324        | Torsion Spring <i>(Two Required)</i>  |
| 22             | 10103294        | 2-3/4" x 3/8" I.D. PEX Spacer   |
| 23             | 10102411        | Spring  |
| 24             | 10102387        | 1/4-28 Coupling Nut - Zinc  |
| 25             | 1017023         | Male Hose Barb  |
| —              | 106M095         | Part Numbers & Schematics Guide – Blastmaster® Pneumatic Closure Lockout Device |
| —              | 1090095         | Operators Manual – Blastmaster® Pneumatic Closure Lockout Device                |

# PART NUMBERS AND SCHEMATICS

Figure 22: Blastmaster® Camlock Closure Lockout Device



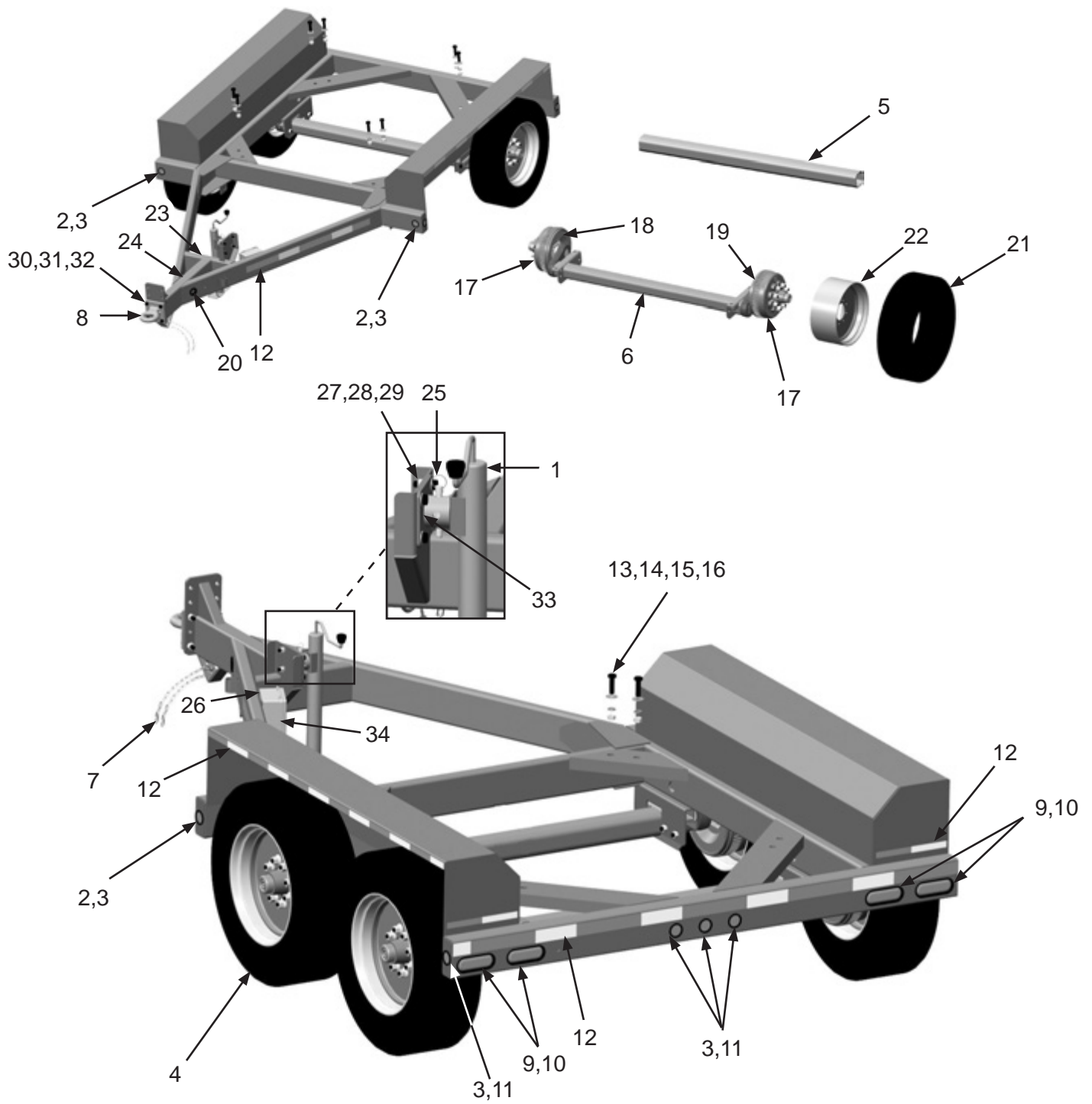
## PART NUMBERS AND SCHEMATICS

### Highway Trailer

| Item #         | Part #          | Description  |
|----------------|-----------------|--|
| <b>Fig. 23</b> |                 |  |
| —              | <b>10104122</b> | <b>Highway Trailer</b>   |
| 1              | 10104141        | 7,000 LB, Square, Top Wind Jack  |
|                | 10100482        | 5,000 LB, Round, Top Wind Jack   |
| 2              | 10104087        | 2" Round LED Amber Clearance Light <i>(Four Required)</i>  |
| 3              | 10104088        | 2" Round Rubber Grommet <i>(Nine Required)</i>   |
| 4              | 10104143        | 215/75R17.5 16-Ply Tire with 17.5" 8-Hole Mod Rim <i>(Four Required)</i>                         |
| 5              | 10104140        | Axle Beam/Tube For Highway Or Yard, No Hubs or Springs <i>(Two Required)</i>                     |
| 6              | 10104138        | 8,000 # Axle With Electric Brakes, With Hubs And Springs 77.5" HF x 60" OB <i>(Two Required)</i> |
| 7              | 10104769        | 3/8" x 41" Safety Chain with Hook  |
| 8              | 10104079        | Pintle Hitch with Flat Plate   |
| 9              | 10104085        | Oval Rubber Grommet <i>(Four Required)</i>   |
| 10             | 10104084        | Oval LED Red Tail Light <i>(Four Required)</i>   |
| 11             | 10104086        | 2" Round LED Red Clearance Light <i>(Five Required)</i>  |
| 12             | 10103879        | 2" x 6" x 6" Red/White Conspicuity Tape  |
| 13             | 10100701        | 3/4-10 x 2-1/2" Bolt <i>(Two Required per Leg)</i>   |
| 14             | 10100704        | 3/4" Flat Washer <i>(Four Required per Leg)</i>  |
| 15             | 10100596        | 3/4" Lock Washer <i>(Two Required per Leg)</i>   |
| 16             | 10100595        | 3/4" Nut <i>(Two Required per Leg)</i>   |
| 17             | 10105734        | Axle Hub Only - No Bearings or Seal <i>(Four Required)</i>                                       |
| 18             | 10105738        | Left-Hand Electric Brake Assembly <i>(Two Required)</i>  |
| 19             | 10105739        | Right-Hand Electric Brake Assembly <i>(Two Required)</i>   |
| 20             | 10105825        | Electrical Break Away Grommet  |
| 21             | 10105735        | Hercules Lt215/75R17.5 16-Ply Tire Only <i>(Four Required)</i>                                   |
| 22             | 10105736        | 17.5" 8-Hole Rim - No Tire <i>(Four Required)</i>  |
| 23             | 1091053         | Lug Nut Torque Value Warning Decal   |
| 24             | 1091145         | Hazard Identification Decal <i>(Highway Trailer)</i>   |
| 25             | 10104709        | 1/2 x 3-1/2" Pin   |
| 26             | 10104081        | Breakaway Kit  |
| 27             | 10105874        | 1/2-13 x 1-1/2" Gr 5 Bolt <i>(Four Required)</i>   |
| 28             | 20100124        | 1/2-13 Nylon Lock Nut <i>(Four Required)</i>   |
| 29             | 10100674        | 1/2" Flat Washer <i>(Eight Required)</i>   |
| 30             | 10105746        | 5/8 x 2-1/2" Gr 8 Bolt <i>(Four Required)</i>  |
| 31             | 10105747        | 5/8 Reverse Lock Nut <i>(Four Required)</i>  |
| 32             | 10103398        | 5/8" Flat Washer <i>(Four Required)</i>  |
| 33             | 10105876        | Jack Plate with Four Holes   |
| 34             | 10105826        | Redline 12V - 5AH Battery Sealed   |
| —              | 10104142        | Wire Harness - Complete <i>(Front, Middle &amp; Rear)</i>  |
| —              | 10105783        | Breakaway Switch with LED  |
| —              | 10105784        | Replacement Pin and Cable for 10105783   |

# PART NUMBERS AND SCHEMATICS

Figure 23: Highway Trailer



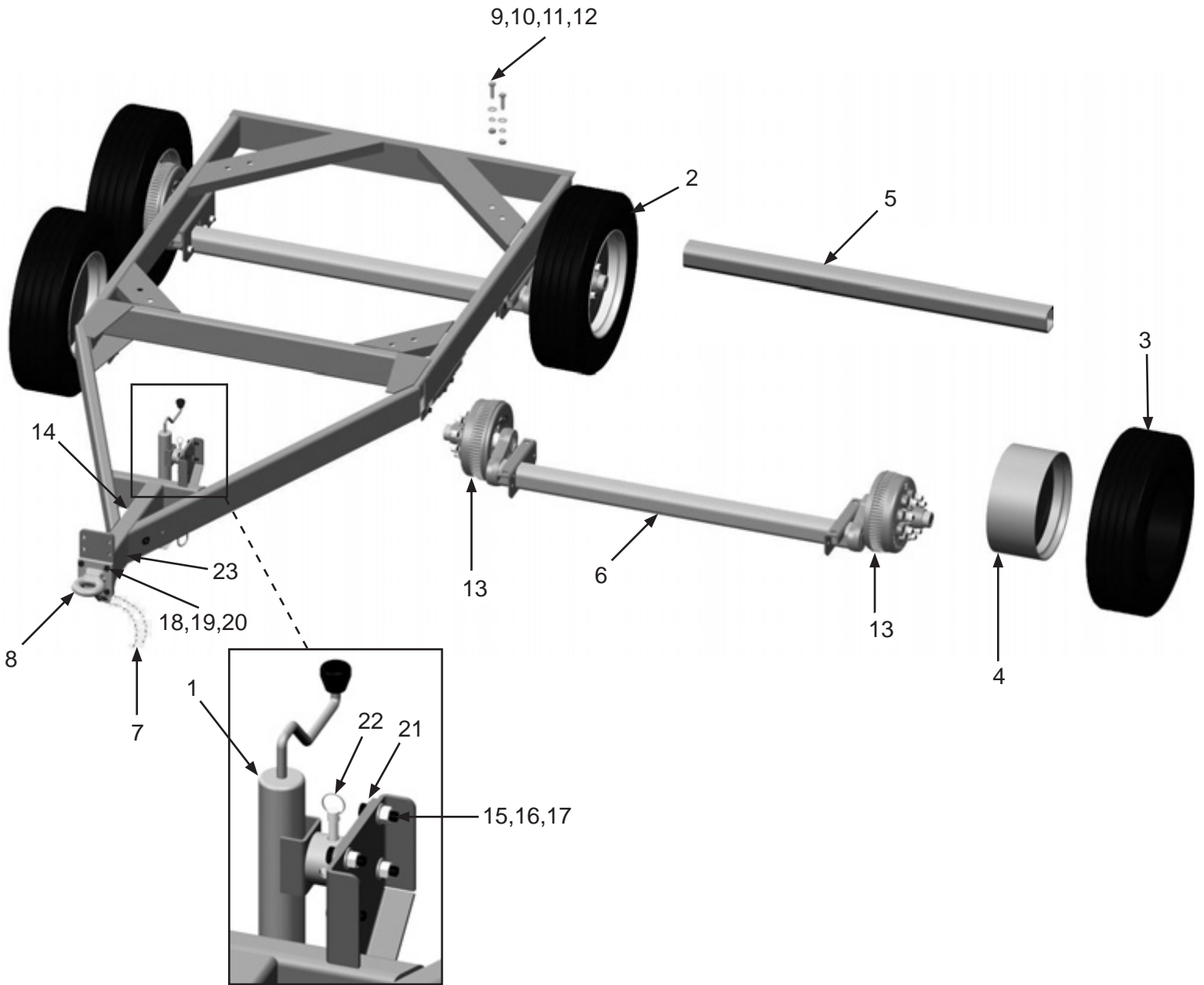
## PART NUMBERS AND SCHEMATICS

### Yard Trailer

| Item #         | Part #          | Description  |
|----------------|-----------------|--|
| <b>Fig. 24</b> |                 |  |
| —              | <b>10104121</b> | <b>Yard Trailer</b>  |
| 1              | 10104141        | 7,000 LB, Square, Top Wind Jack  |
|                | 10100482        | 5,000 LB, Round, Top Wind Jack   |
| 2              | 10104143        | 215/75R17.5 16-Ply Tire with 17.5" 8-Hole Mod Rim <i>(Four Required)</i>   |
| 3              | 10105735        | Hercules Lt215/75R17.5 16-Ply Tire Only <i>(Four Required)</i>   |
| 4              | 10105736        | 17.5" 8-Hole Rim - No Tire <i>(Four Required)</i>  |
| 5              | 10104140        | Axle Beam/Tube For Highway or Yard, No Hubs or Springs <i>(Two Required)</i>                                       |
| 6              | 10104138        | 8,000 # Torflex Axle, Complete With Hubs And Springs<br>77.5" HF x 60" OB <i>(For Yard Config.) (Two Required)</i> |
| 7              | 10104769        | 3/8" x 41" Safety Chain with Hook  |
| 8              | 10104079        | Pintle Hitch with Flat Plate   |
| 9              | 10100701        | 3/4-10 x 2-1/2" Bolt <i>(Two Required per Leg)</i>   |
| 10             | 10100704        | 3/4" Flat Washer <i>(Four Required per Leg)</i>  |
| 11             | 10100596        | 3/4" Lock Washer <i>(Two Required per Leg)</i>   |
| 12             | 10100595        | 3/4" Nut <i>(Two Required per Leg)</i>   |
| 13             | 10105734        | Axle Hub Only – No Bearings or Seal <i>(Four Required)</i>   |
| 14             | 1091146         | Hazard Identification Decal <i>(Yard Trailer)</i>  |
| 15             | 10105874        | 1/2-13 x 1-1/2" Gr 5 Bolt <i>(Four Required)</i>   |
| 16             | 20100124        | 1/2-13 Nylon Lock Nut <i>(Four Required)</i>   |
| 17             | 10100674        | 1/2" Flat Washer <i>(Eight Required)</i>   |
| 18             | 10105746        | 5/8 x 2-1/2" Gr 8 Bolt <i>(Four Required)</i>  |
| 19             | 10105747        | 5/8 Reverse Lock Nut <i>(Four Required)</i>  |
| 20             | 10103398        | 5/8" Flat Washer <i>(Four Required)</i>  |
| 21             | 10105876        | Jack Plate with Four Holes   |
| 22             | 10104709        | 1/2 x 3-1/2" Pin   |
| 23             | 1091053         | Lug Nut Torque Value Warning Decal   |

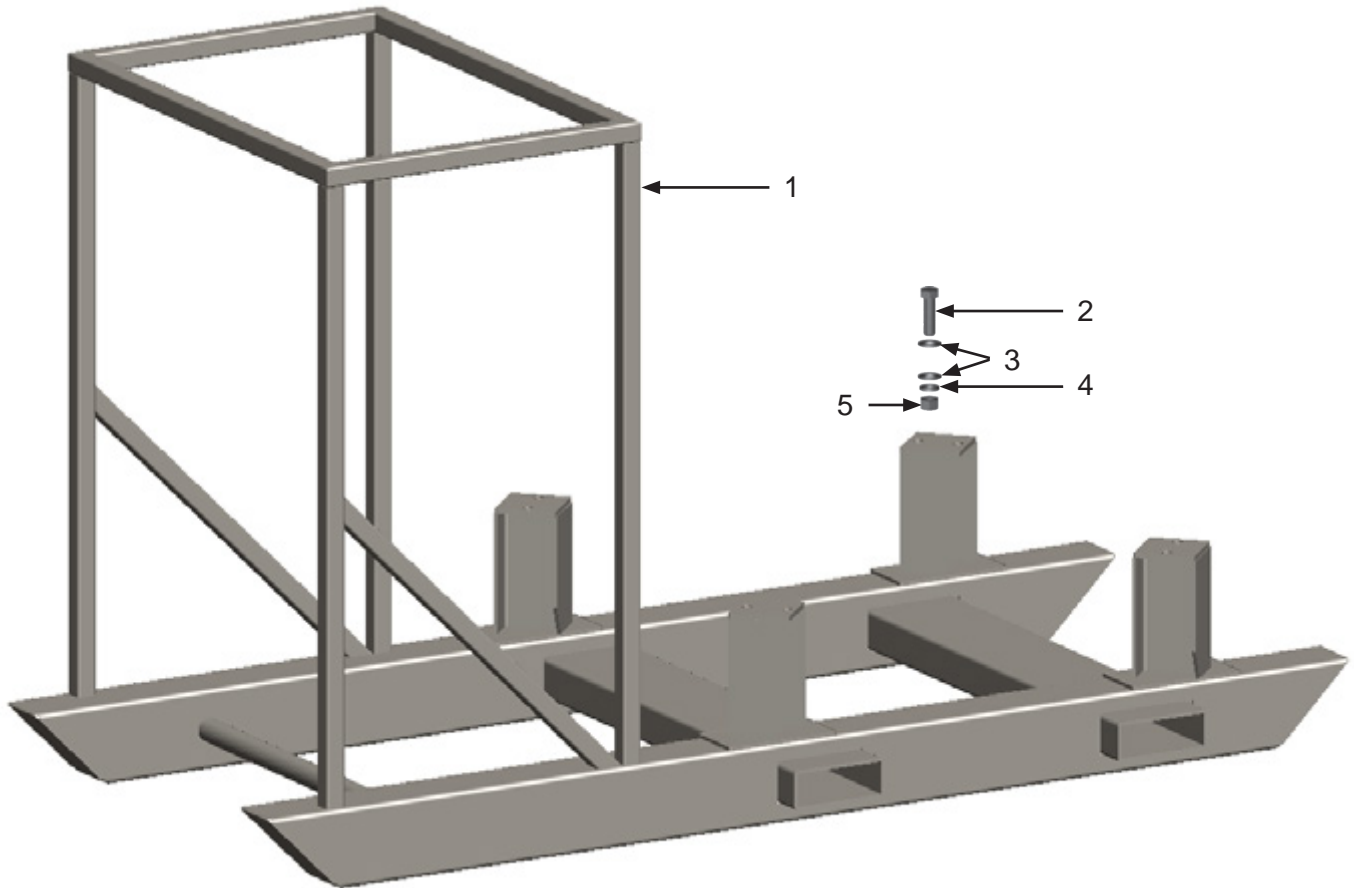
# PART NUMBERS AND SCHEMATICS

Figure 24: Yard Trailer



## PART NUMBERS AND SCHEMATICS

Figure 25: Fork-Pocket Skid Weldment Off Shore



| Item # | Part # | Description |
|--------|--------|-------------|
|--------|--------|-------------|

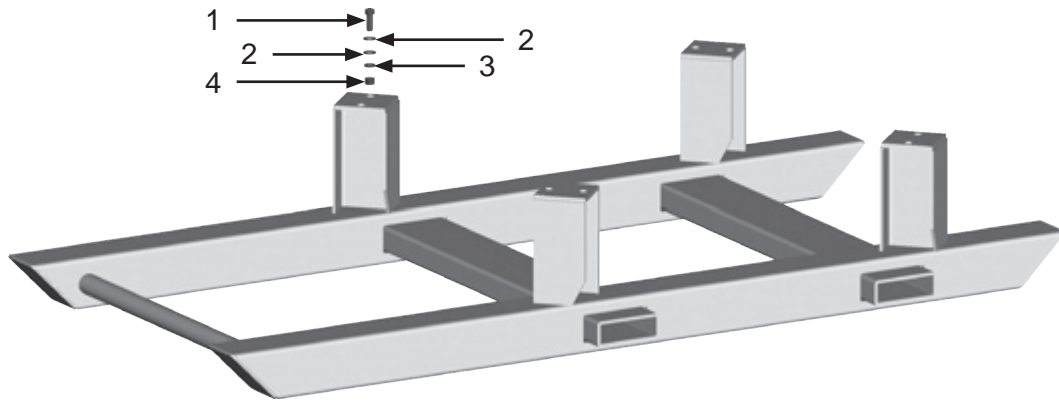
Fig. 25

|   |          |  |
|---|----------|--|
| 1 | 10101828 | Fork-Pocket Skid Weldment Off Shore            |
| 2 | 10100701 | 3/4-10 x 2-1/2" Bolt ( <i>Eight Required</i> ) |
| 3 | 10100704 | 3/4" Flat Washer ( <i>16 Required</i> )        |
| 4 | 10100596 | 3/4" Lock Washer ( <i>Eight Required</i> )     |
| 5 | 10100595 | 3/4" Nut ( <i>Eight Required</i> )             |



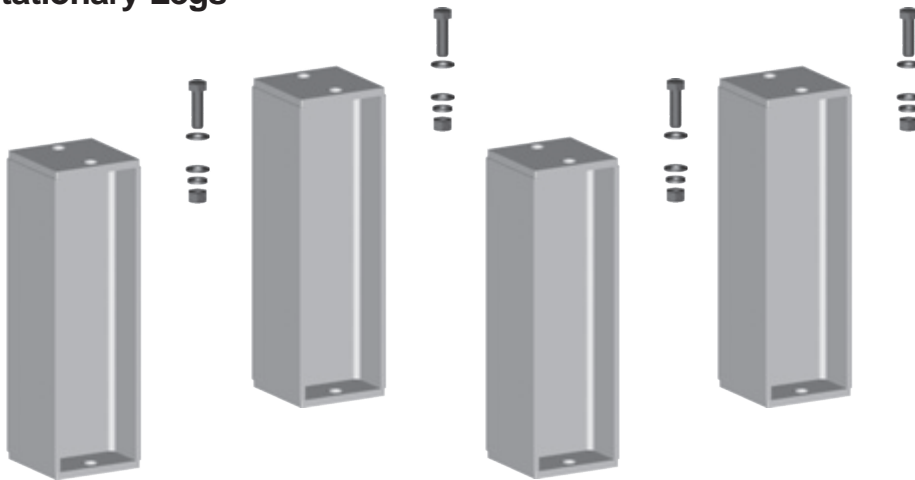
## PART NUMBERS AND SCHEMATICS

Figure 26: Fork-Pocket Skid



| Item #         | Part #   | Description                                    |
|----------------|----------|--|
| <b>Fig. 26</b> |          |  |
| —              | 10100852 | Fork-Pocket Skid                               |
| 1              | 10100701 | 3/4-10 x 2-1/2" Bolt ( <i>Eight Required</i> ) |
| 2              | 10100704 | 3/4" Flat Washer ( <i>16 Required</i> )        |
| 3              | 10100596 | 3/4" Lock Washer ( <i>Eight Required</i> )     |
| 4              | 10100595 | 3/4" Nut ( <i>Eight Required</i> )             |

Figure 27: Stationary Legs



| Item #         | Part #         | Description  |
|----------------|----------------|--|
| <b>Fig. 27</b> |                |  |
| —              | <b>1081660</b> | <b>Stationary Legs and Mounting Kit – Complete Set of Four</b><br><i>Includes item #s: 1 (Quantity of Four), 2 (Quantity of Eight), 3 (Quantity of 16), 4 (Quantity of Eight), 5 (Quantity of Eight)</i> |
| 1              | 10000514       | Stationary Leg ( <i>Four Required</i> )  |
| 2              | 10100701       | 3/4-10 x 2-1/2" Bolt ( <i>Two Required per Leg</i> )   |
| 3              | 10100704       | 3/4" Flat Washer ( <i>Four Required per Leg</i> )  |
| 4              | 10100596       | 3/4" Lock Washer ( <i>Two Required per Leg</i> )   |
| 5              | 10100595       | 3/4" Nut ( <i>Two Required per Leg</i> )   |

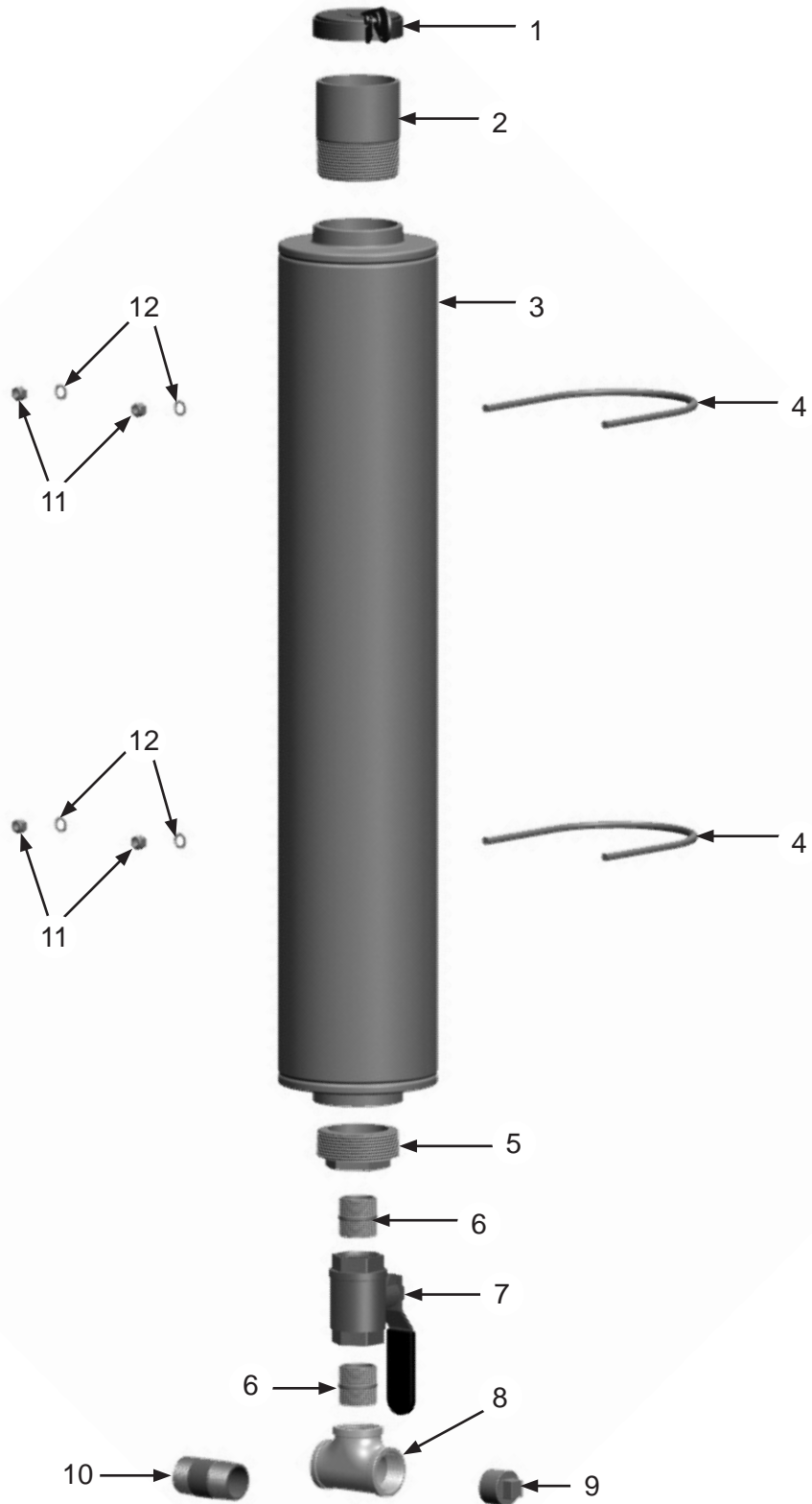
## PART NUMBERS AND SCHEMATICS

### Blastmaster® Large Exhaust Muffler

| Item #         | Part #   | Description  |
|----------------|----------|--|
| <b>Fig. 28</b> |          |  |
| 1              | 10103583 | 3-1/2" Rain Cap - Painted Gray                             |
| 2              | 10105208 | 3"NPT x 4" Toe Nipple - Galvanized                         |
| 3              | 10103575 | Absorptive Silencer U5-3 Universal                         |
| 4              | 1070967  | U-BOLT 3/8-16 x 6-3/4" R x 8-3/8" ( <i>Two Required</i> )  |
| 5              | 10105045 | 3" x 1-1/4" Hex Bushing Galvanized                         |
| 6              | 10101750 | 1-1/4" NPT Galvanized Close Nipple ( <i>Two Required</i> ) |
| 7              | 1011602  | 1-1/4" Full Port Ball Valve                                |
| 8              | 1011803  | 1-1/4" NPT Galvanized Pipe Tee                             |
| 9              | 1011902  | 1-1/4" NPT Galvanized Pipe Plug                            |
| 10             | 10107274 | 1-1/4" x 4" Nipple - Galvanized SCH 80                     |
| 11             | 20100138 | 3/8"-16 Hex Lock Nut Zinc                                  |
| 12             | 1014241  | 3/8" Id x 3/4" Od Washer                                   |

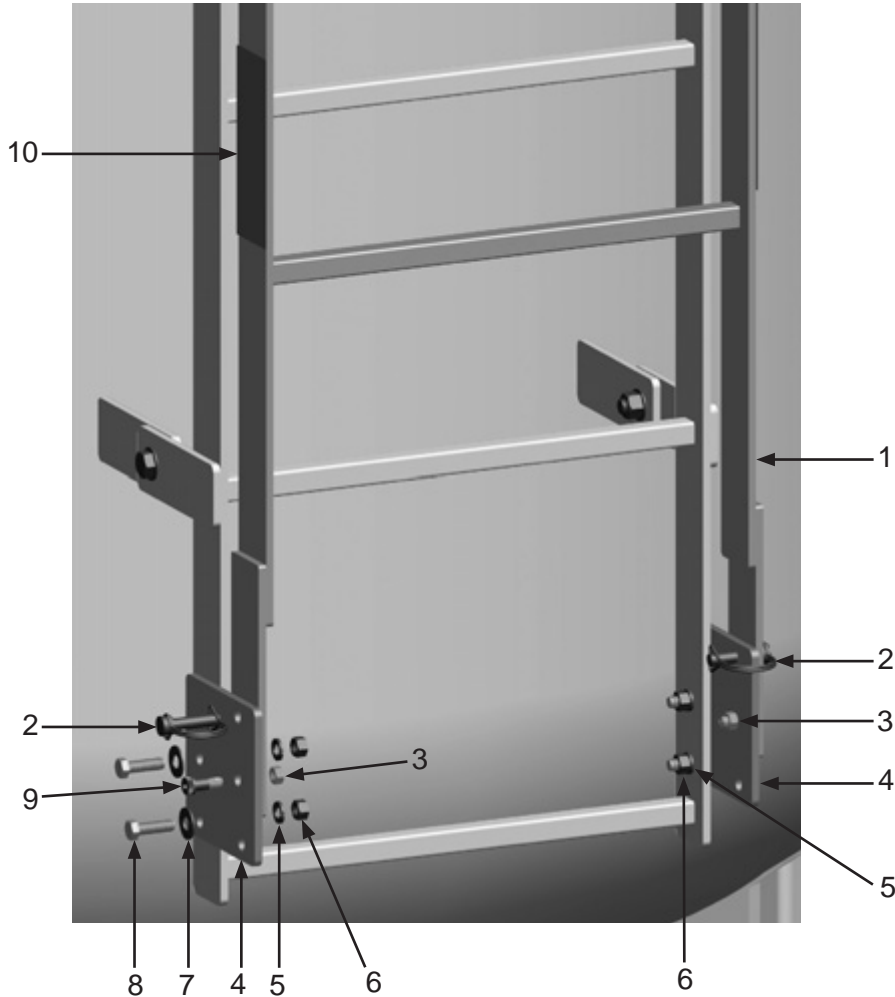
# PART NUMBERS AND SCHEMATICS

Figure 28: Blastmaster® Large Exhaust Muffler



## OPTIONAL ACCESSORIES

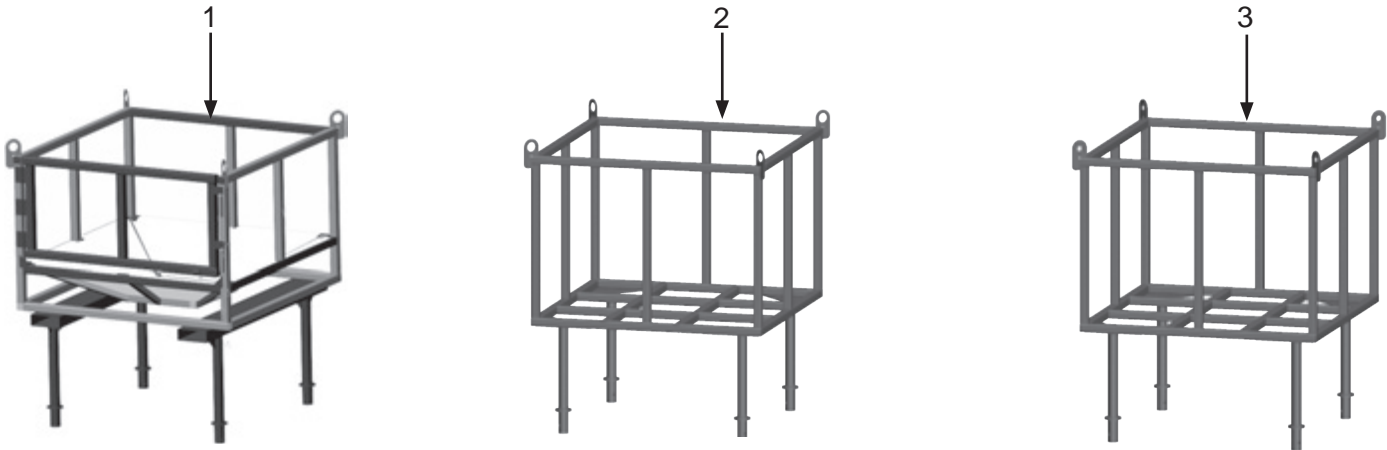
**Figure 29: Hinged Ladder Extension (Optional)**



| Item #         | Part #          | Description   |
|----------------|-----------------|---|
| <b>Fig. 29</b> |                 |   |
| —              | <b>10103727</b> | <b>Hinged Ladder Extension – Complete</b> (Optional)<br><i>Includes Two Ladder Extension Kits</i> |
| 1              | 10103915        | Ladder Extension Body (Two Required)<br><i>Includes Item #10</i>                                  |
| 2              | 10103728        | 3/8" D-Locking Pin (Four Required)  |
| 3              | 10103730        | 5/16-18 Hex Nut (Four Required)   |
| 4              | 10103509        | Ladder Extension Bracket (Four Required)  |
| 5              | 10101936        | 3/8" Lock Washer (Eight Required)   |
| 6              | 10101938        | 3/8-16 Hex Nut (Eight Required)   |
| 7              | 10101942        | 3/8" Flat Washer (Eight Required)   |
| 8              | 10101059        | 3/8-16 x 1-1/4" Bolt (Eight Required)   |
| 9              | 10103729        | 3/8" Shoulder Bolt (Four Required)  |
| 10             | 10103881        | 2" Red Conspicuity Tape (Sold per inch. 12 Inches required per Ladder)                            |

## OPTIONAL ACCESSORIES

**Figure 30: Blastmaster® Bulk Bag Racks (Optional)**

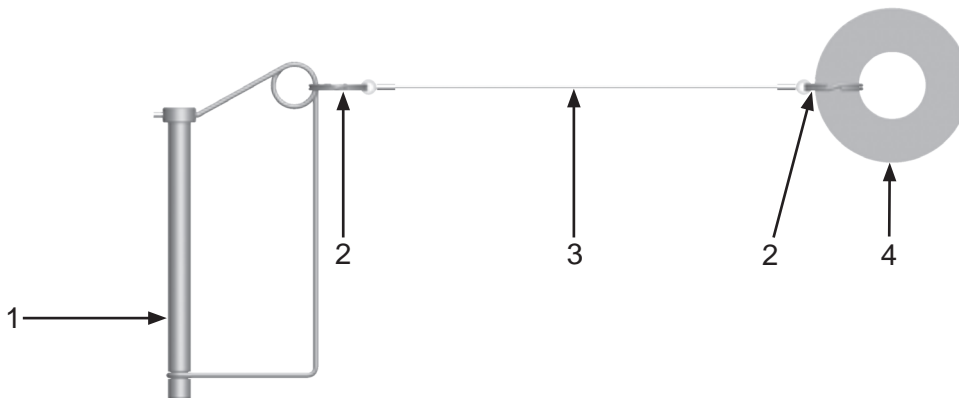


| Item # | Part # | Description |
|--------|--------|-------------|
|--------|--------|-------------|

**Fig. 30**

|   |          |   |
|---|----------|---|
| 1 | 10104768 | Blastmaster® Heavy-Duty Bulk Bag Rack with Swing Gate, Tapered Support Panels<br><i>Includes Locking Pin Assembly</i> |
| 2 | 10102133 | Bulk Bag Rack with Grid Support, 2.25" I.D. Lifting Eye   |
| 3 | 10103271 | Bulk Bag Rack with Grid Support, .704" I.D. Lifting Eye   |
| — | 10107105 | 20' Rope ( <i>Not Shown</i> )   |

**Figure 31: Blastmaster® Bulk Bag Rack Locking Pin**



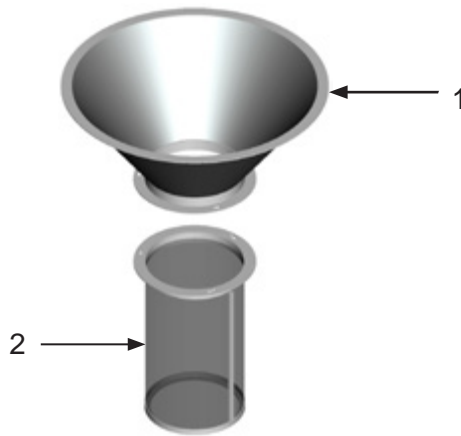
| Item # | Part # | Description |
|--------|--------|-------------|
|--------|--------|-------------|

**Fig. 31**

|   |                 |  |
|---|-----------------|--|
| — | <b>10103386</b> | <b>Locking Pin Assembly – Complete</b> |
| 1 | 10103387        | 3/8" x 4" Locking Pin                  |
| 2 | 10103388        | Split Ring ( <i>Two Required</i> )     |
| 3 | 10103390        | 7" Lanyard with Eyelets                |
| 4 | 10103389        | 2-1/4" O.D. x 1-1/4" I.D. Flat Washer  |

## OPTIONAL ACCESSORIES

Figure 32: Abrasive Screen and Funnel (Optional)



| Item # | Part # | Description |
|--------|--------|-------------|
|--------|--------|-------------|

Fig. 32

|   |          |   |
|---|----------|---|
| — | 10101705 | Abrasive Screen and Funnel for 10" Diameter Camlock Closure |
| 1 | 10101817 | Funnel  |
| 2 | 10101704 | Abrasive Screen for 10" Diameter Camlock Closure            |

# LITERATURE REFERENCES

## Remote Control Switches

106M068 Part Numbers and Schematics Guide – Blastmaster® 152P Remote Control Switch

1090068 Operator's Manual – Blastmaster® 152P Remote Control Switch

106M063 Part Numbers and Schematics Guide – Blastmaster® 151E Remote Control Switch

1090063 Operator's Manual – Blastmaster® 151E Remote Control Switch

## Abrasive Blasting Pot

106M060 Part Numbers and Schematics Guide – Blastmaster® 160 cu. ft. Abrasive Blasting Pots

1090060 Operator's Manual – Blastmaster® 160 cu. ft. Abrasive Blasting Pots

109S060 Service Manual – Blastmaster® 160 cu. ft. Abrasive Blasting Pots

## CONTACT CENTER

- 3425 East Locust Street  
Davenport, IA 52803

ph: 800.BLAST.IT (800.252.7848)

ph: 563.324.2519

fax: 563.324.6258

## REGIONAL BRANCH OFFICES

- **Iowa**  
Davenport
- **Louisiana**  
Gonzales  
Lafayette
- **Ohio**  
Youngstown
- **Texas**  
Beaumont  
Corpus Christi  
Deer Park



ABRASIVES

BLASTING

COATING

DUST COLLECTION

RENTAL & SERVICE

SAFETY

VACUUMS

## 40+ NATIONWIDE SHIPPING LOCATIONS



★ Marco Regional Branch Offices  
and Shipping Locations

● Direct Shipping Locations

## CONTACT MARCO

800.BLAST.IT  
(800.252.7848)  
563.324.2519  
FAX: 563.324.6258

WWW.MARCO.US  
SALES@MARCO.US