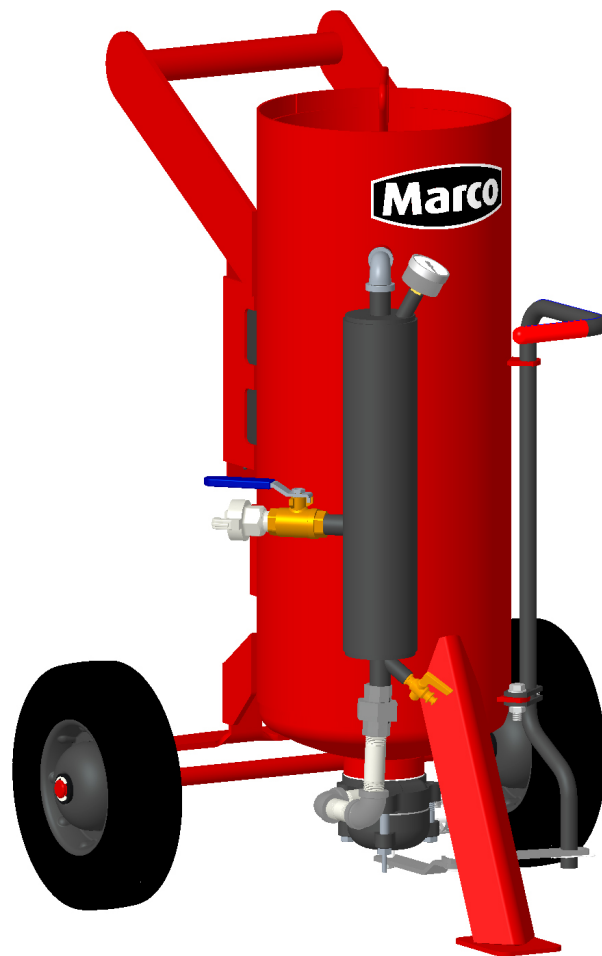




MARCO® 1.5 CU. FT. L-SERIES ABRASIVE BLASTING POT



PART NUMBERS AND SCHEMATICS GUIDE

Company Profile

Allredi was formed in the early 2020, when two of the largest distributors in the blasting, coating, safety, and environmental industry, APE Companies and Marco Group International, joined forces. While the qualities both companies are known for have not changed, a lot about our business is new. New abilities. New agilities. New ways to help you win. This calls for a new name, Allredi.

This name exemplifies what we have become. It is completely oriented to the needs of our customers. To your needs. It says that when you call us for anything – products, service, expert advice, anything – you can consider it done. Or even better, Allredi done.

We are your right-now supplier. From skills to SKUs, we deliver the goods fast. So you can be more agile every minute, every day. This is who we are. This is what our new name means. Go ahead and expect excellence, because we're bringing it.

Our Mission and Vision

To be the industry's preferred partner in surface preparation solutions through unrivaled technical expertise, customer experience, product availability, and tailored service offerings.

The Allredi Difference

- **Industry Experience** – With Allredi on your team, you have access to expertise which can only come from decades of industry leadership. We have organized our engineering department, production specialists, customer operations, and safety support into a "Center of Competence." As an Allredi customer, you have access to hundreds of years of cumulative experience related to your operations.
- **Manufacturing Excellence** – Allredi is a U.S. based manufacturer of equipment for the Surface Preparation and Protective Coatings industries. Allredi's engineers benchmark the industry to ensure that we design and manufacture superior products that set the "Gold Standard" for performance, safety, and quality.
- **Legendary Customer Service** – Allredi's legendary customer service team is staffed by friendly, highly-trained individuals who are focused on providing the highest level of product support, order accuracy, and customer satisfaction.
- **Product Availability** – We stock over 10,000 SKU's and have over 45 shipping locations to serve North American and International markets for all major brands of blasting, coating, environmental, and safety equipment. Allredi is your right-now supplier, so you can keep your projects moving. From our foundation of strong relationships, we have built a nationwide network that puts vast inventory and ready service close to our customers. We provide advanced expertise, and we deliver the goods fast – so you can easily access the products and services you need to me more agile every minute, every day.
- **Technology Leadership** – Our website provides: Operator's Manuals, Part Numbers and Schematics Guides, SDS information, and key product features and specifications, providing access to information 24/7.

TABLE OF CONTENTS

Company Profile	1
Part Numbers	3
Part Numbers and Schematics	5
Marco® 1.5 Cu. Ft. L-Series Abrasive Blasting Pot	5
Marco® 2-Hole Junior Abrasive Mixing Valve – Complete .	9
Optional Accessories	11
Lid With Screen	11
Type I Ceramic Nozzles	11
Blast Hose and Accessories	12
Hose End Assemblies	13
Maintenance Notes	14

PART NUMBERS

MARCO® 1.5 CU. FT. L-SERIES ABRASIVE BLASTING POT

Part Numbers	Abrasive Metering Valve	Remote Control Switch	Ceramic Nozzles	1/2" I.D. Abrasive Blasting Hose	Moisture Separator
1001155	2-Hole Junior	—	(2) 10CN251, (2) 10CN21251	25 Ft.	10L100129
1001156	2-Hole Junior	10L66EVD	(2) 10CN251, (2) 10CN21251	25 Ft.	10L100129



PART NUMBERS

Marco® 1.5 Cu. Ft. L-Series Abrasive Blasting Pot – 1001155



Marco® 1.5 Cu. Ft. L-Series Abrasive Blasting Pot – 1001156



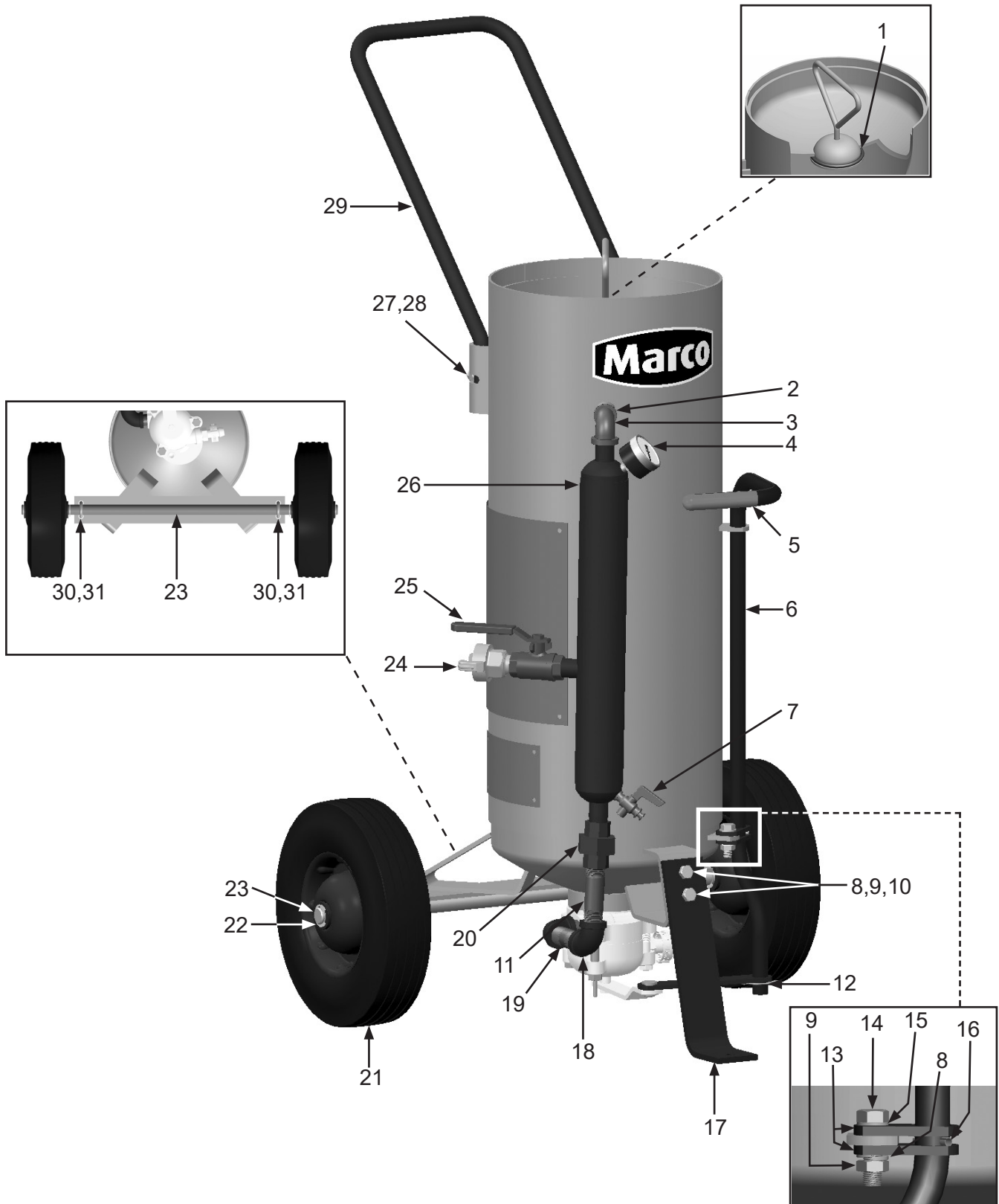
PART NUMBERS AND SCHEMATICS

Marco® 1.5 Cu. Ft. L-Series Abrasive Blasting Pot - Units built before April 2021

Item #	Part #	Description
Fig. 1		
1	10L650R	Filler Plug O-Ring
2	1011209	3/8" NPT Close Nipple
3	10L806058	1/2" NPT x 3/8" NPT 90° Reducing Elbow
4	10L800719	Pressure Gauge
5	10L103LG	Control Lever Grip
6	10L100268	Control Lever <i>(Includes Item #'s: 5 and 16)</i>
7	10L348	1/8" Petcock
8	10L805015	3/8" Lock Washer <i>(Three Required)</i>
9	10L804303	3/8-24 Hex Nut <i>(Three Required)</i>
10	10L805317	3/8-24 x 1" Bolt <i>(Two Required)</i>
11	10L803042	1/2" NPT x 3" Nipple
12	10L103H	Hair Spring Clip
13	10L100058	Control Lever Bracket <i>(Two Required)</i>
14	10L805318	3/8-24 x 1-1/4" Bolt
15	1014241	3/8" Flat Washer
16	10L800085	Roll Pin, 3/16" x 1"
17	10101868	Spring Foot
18	10L806004	1/2" NPT 90° Elbow <i>(Two Required)</i>
19	10L803038	1/2" NPT x 2" Nipple
20	10L806176	1/2" NPT Union
21	1006067	Wheel and Tire Assembly <i>(Two Required)</i>
22	10101811	E-Clip <i>(Four Required)</i>
23	10101934	Axle
24	10ME122	1/2" NPT Male 2-Lug Coupling
25	10L363	1/2" NPT Full Port Brass Ball Valve
26	10L100129	Moisture Separator <i>(Includes Item #'s: 4 and 7)</i>
27	10L805312	5/16-24 x 3/4" Bolt <i>(Two Required)</i>
28	10L805003	5/16" Flat Washer <i>(Two Required)</i>
29	10L347	Handle
30	10101813	1/4-20 U-Bolt with Nuts <i>(Two Required)</i>
31	1012153	1/4" Lock Washer <i>(Four Required)</i>
—	10L66EVD	Blastmaster® 153 Hose-End Shutoff
—	10L66B	1/2" NPT Nozzle Holder Base
—	106M062	Part Numbers and Schematics Guide – Marco® 1.5 Cu. Ft. L-Series Abrasive Blasting Pot
—	1090062	Operator's Manual – Marco® 1.5 Cu. Ft. L-Series Abrasive Blasting Pot

PART NUMBERS AND SCHEMATICS

Figure 1: Marco® 1.5 Cu. Ft. L-Series Abrasive Blasting Pot- Units built before April 2021



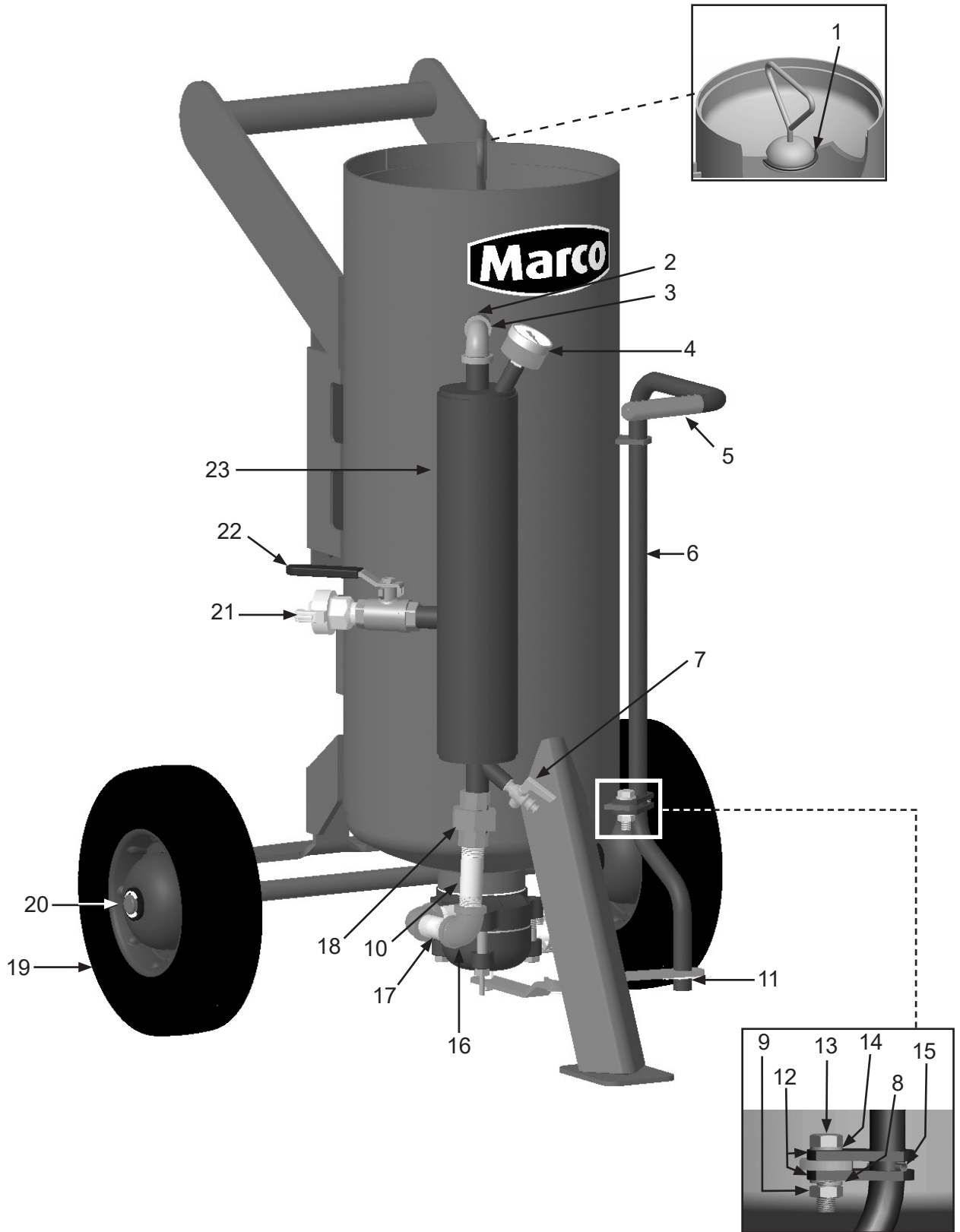
PART NUMBERS AND SCHEMATICS

Marco® 1.5 Cu. Ft. L-Series Abrasive Blasting Pot - Units built after April 2021

Item #	Part #	Description
Fig. 1		
1	10L650R	Filler Plug O-Ring
2	1011209	3/8" NPT Close Nipple
3	10L806058	1/2" NPT x 3/8" NPT 90° Reducing Elbow
4	10L800719	Pressure Gauge
5	10L103LG	Control Lever Grip
6	10L100268	Control Lever <i>(Includes Item #'s: 5 and 1)</i>
7	10L348	1/8" Petcock
8	10L805015	3/8" Lock Washer
9	10L804303	3/8-24 Hex Nut
10	10L803042	1/2" NPT x 3" Nipple
11	10L103H	Hair Spring Clip
12	10L100058	Control Lever Bracket <i>(Two Required)</i>
13	10L805318	3/8-24 x 1-1/4" Bolt
14	1014241	3/8" Flat Washer
15	10L800085	Roll Pin, 3/16" x 1"
16	10L806004	1/2" NPT 90° Elbow <i>(Two Required)</i>
17	10L803038	1/2" NPT x 2" Nipple <i>(Two Required)</i>
18	10L806176	1/2" NPT Union
19	1006067	Wheel and Tire Assembly <i>(Two Required)</i>
20	10101811	E-Clip <i>(Four Required)</i>
21	10ME122	1/2" NPT Male 2-Lug Coupling
22	10L363	1/2" NPT Full Port Brass Ball Valve
23	10L100129	Moisture Separator <i>(Includes Item #'s: 4 and 7)</i>
—	10L66EVD	Blastmaster® 153 Hose-End Shutoff
—	10L66B	1/2" NPT Nozzle Holder Base
—	106M062	Part Numbers and Schematics Guide – Marco® 1.5 Cu. Ft. L-Series Abrasive Blasting Pot
—	1090062	Operator's Manual – Marco® 1.5 Cu. Ft. L-Series Abrasive Blasting Pot

PART NUMBERS AND SCHEMATICS

Figure 1: Marco® 1.5 Cu. Ft. L-Series Abrasive Blasting Pot - *Units built after April 2021*



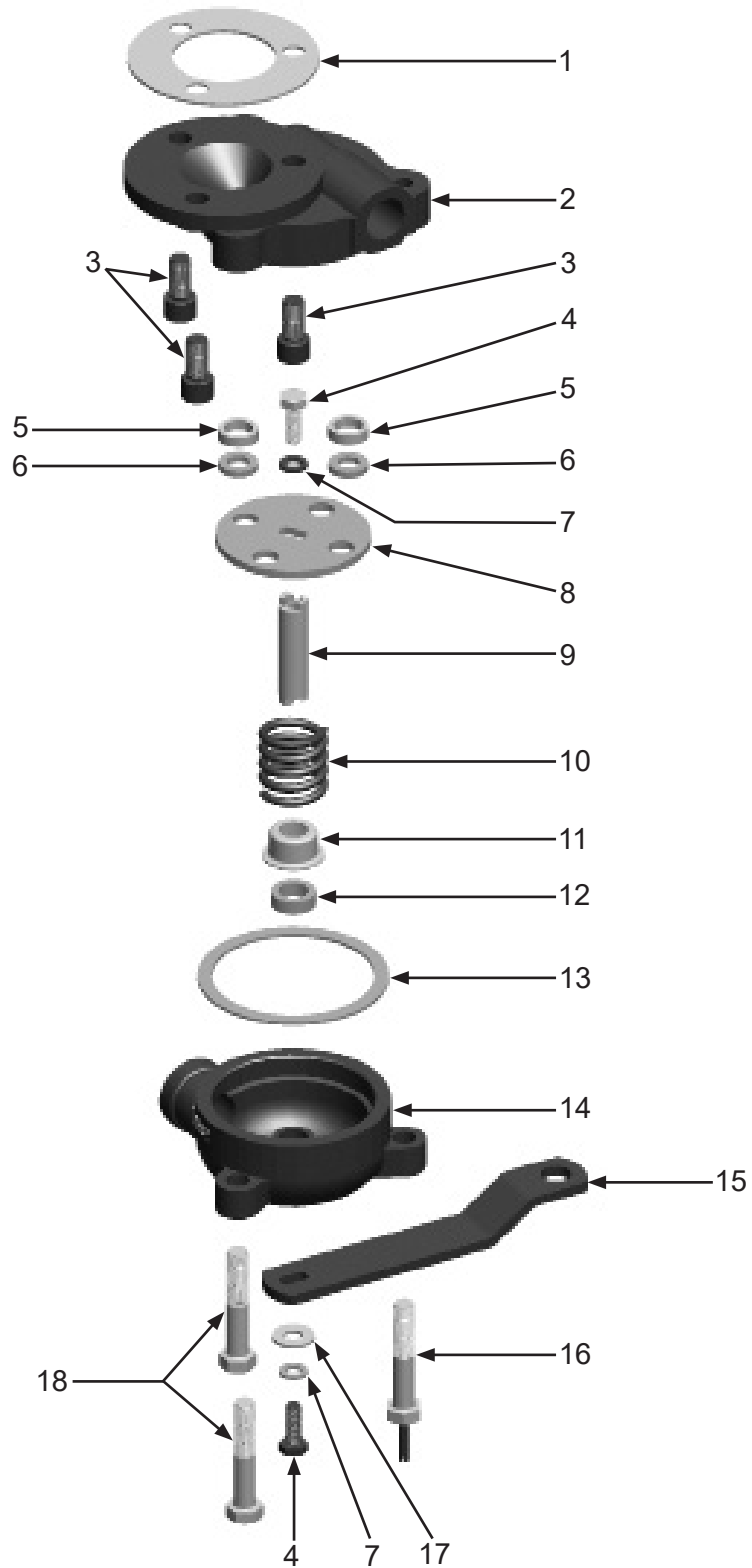
PART NUMBERS AND SCHEMATICS

Marco® 2-Hole Junior Abrasive Mixing Valve – Complete

Item #	Part #	Description
Fig. 2		
—	10L100197	Marco® 2-Hole Junior Abrasive Mixing Valve – Complete
1	10L301BG	Valve Body Gasket
2	10L100009	Valve Body <i>(Includes Item #3 (Quantity of Three))</i>
3	10L805531	Socket Head Cap Screw <i>(Three Required)</i>
4	10L805302	Spindle Bolt <i>(Two Required)</i>
5	10LC25	Valve Cushion <i>(Two Required)</i>
6	10L100019	Valve Washer <i>(Two Required)</i>
7	1012153	1/4" Lock Washer <i>(Two Required)</i>
8	10L100079	Valve Plate
9	10L100083	Spindle
10	10L344	Valve Spring
11	10LC31	Spindle Packing
12	10LC32	Packing
13	10LC16	Cover Gasket
14	10L100082	Valve Cover - 1/2" NPT
15	10LC4X	Valve Control Arm
16	10L303CS	Stop Pin Bolt
17	1014017	1/4" Flat Washer
18	10L805319	Cover Bolt
—	10L336A	Marco® 2-Hole Junior Abrasive Mixing Valve Service Kit <i>Includes Item #'s: 1, 4 (Quantity of Two), 5 (Quantity of Two), 6 (Quantity of Two), 7 (Quantity of Two), 8, 9, 10, 11, 12, 13, 17</i>
—	1091045	Hazard Identification Tag
—	106M431	Part Numbers and Schematics Guide – Marco® 2-Hole Junior Abrasive Mixing Valve
—	1090030	Operator's Manual – Marco® 2-Hole Junior Abrasive Mixing Valve

PART NUMBERS AND SCHEMATICS

Figure 2: Marco® 2-Hole Junior Abrasive Mixing Valve – Complete



OPTIONAL ACCESSORIES

Figure 3: Lid With Screen



Item #	Part #	Description
Fig. 3		
1	10101730	10" Lid
2	1001510	10" Funnel with Screen
—	10L161S	Screen for 10" Funnel

Figure 4: Type I Ceramic Nozzles



TYPE I CERAMIC NOZZLES					
Part Numbers	Size	Orifice Size	Nozzle Entry	Overall Length	Abrasive Mesh Size
10CN051	1	3/32"	5/8"	3-3/4"	100 Mesh or Finer
10CN251	2	1/8"	5/8"	3-3/4"	60 Mesh or Finer
10CN21251	2-1/2	5/32"	5/8"	3-3/4"	50 Mesh or Finer
10CN351	3	3/16"	5/8"	3-3/4"	50 Mesh or Finer
10CN451	4	1/4"	5/8"	3-3/4"	40 Mesh or Finer
10CN551	5	5/16"	5/8"	3-3/4"	20 Mesh or Finer
10CN651	6	3/8"	5/8"	3-3/4"	12 Mesh or Finer

OPTIONAL ACCESSORIES

Figure 5: Blast Hose and Accessories

1/2" I.D. ABRASIVE BLASTING HOSE						
Part Numbers	O.D.	Fabric Reinforcement	Working Pressure	Liner Thickness	Hose Cover Color	Length (Ft.)
		2-Ply		1/4" Heavy-Duty	Black	
10BH012B	1-1/16"	X	150 PSI	X	X	50
10BH012E	1-1/8"	X	150 PSI	X	X	50
10BH0122CR	1-3/16"	X	150 PSI	X	X	Per Foot
10BH012C	1-3/16"	X	150 PSI	X	X	50
10BH0124C	1-3/16"	X	150 PSI	X	X	400

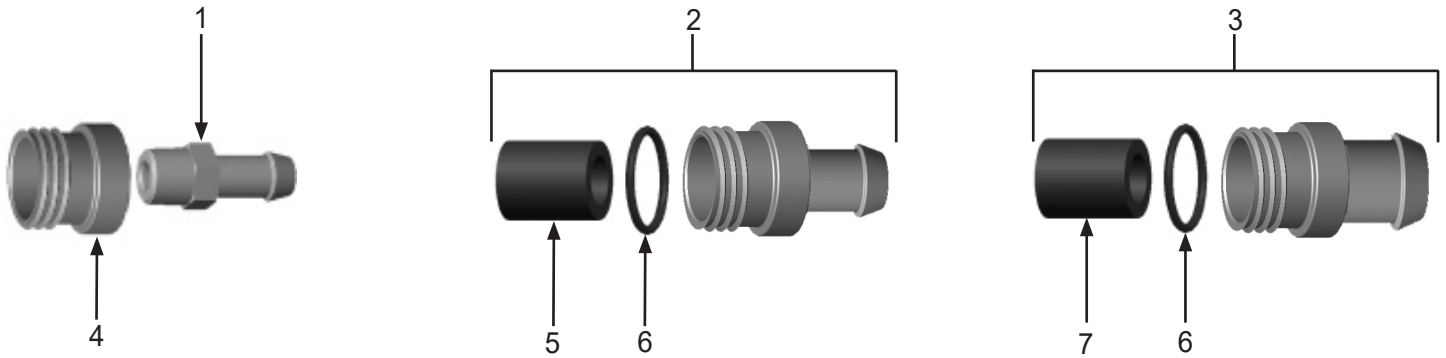
1/2" I.D. ABRASIVE BLASTING HOSE WITH COUPLINGS INSTALLED													
Part Numbers	I.D.	1-3/16" O.D.	Fabric Reinforcement	Working Pressure	Liner Thickness	Hose Cover Color	Length (Ft.)	Coupling(s)					
			2-Ply		1/4"	Black		Aluminum	Brass	Iron	Nylon	Steel	
10L850119	1/2"	X	X	150 PSI	X	X	10 Ft.						X
10L850125	1/2"	X	X	150 PSI	X	X	50 Ft.						X
10L850120	1/2"	X	X	150 PSI	X	X	25 Ft.						X
1081226	1/2"	X	X	150 PSI	X	X	25 Ft.	X					

COUPLINGS FOR 1/2" I.D. ABRASIVE BLASTING HOSE						
Part Numbers	Hose O.D.	Material	Lugs	GASKET OPTIONS		
				Rubber	Urethane	Gasket I.D.
10QAL050	1-1/16"	Aluminum	2	10SBG	10USBG	1-1/4"
10EM505222	1-1/8"	Steel	2	10SBG	10USBG	1-1/4"
10QAL12	1-3/16"	Aluminum	2	10SBG	10USBG	1-1/4"

NOZZLE HOLDERS FOR 1/2" I.D. ABRASIVE BLASTING HOSE				
Part Numbers	Hose O.D.	Material	Thread Style	Nozzle Washer
10NHA050	1-1/16"	Aluminum	3/4"	10NW1
10EM505232	1-1/8"	Steel	1" Male	—
10NHA12	1-3/16"	Aluminum	3/4"	10NW1

OPTIONAL ACCESSORIES

Figure 6: Hose End Assemblies



Item #	Part #	Description
--------	--------	-------------

Fig. 6

1	10L174	Hose End for 1/2" I.D. Abrasive Blasting Hose
2	10L366HE	Hose End for 3/4" I.D. Abrasive Blasting Hose (Includes Item #'s: 5 and 6)
3	10L466HE	Hose End for 1" I.D. Abrasive Blasting Hose (Includes Item #'s: 6 and 7)
4	10L66B	Nozzle Holder Base
5	10L800236	Rubber Liner for 3/4" I.D. Abrasive Blasting Hose
6	10L66RR	O-Ring
7	10L800237	Rubber Liner for 1" I.D. Abrasive Blasting Hose



ALLREDI THERE

Serving these industries: Bridge, Pipeline, Tank & Tower, Concrete Services, Rail, Shipyard & Marine, Pools & Fountains and Foundry

UNITED STATES

Pasadena, TX (*Headquarters*)
844.361.7038

Beaumont, TX
409.722.1284

Bristol, PA
215.826.8080

Corpus Christi, TX
361.887.2038

Davenport, IA
563.324.2519

Deer Park, TX
(*Service & Rental Location*)
281.930.0905

Duluth, GA
800.535.4564

Gonzales, LA
225.647.7575

Harvey, LA
504.367.8090

Houma, LA
985.580.4273

Jacksonville, FL
904.262.2120

Lafayette, LA
337.267.1440

Theodore, AL
251.338.7525

Youngstown, OH
330.448.6267

CANADA

Calgary, Alberta
403.279.1924

Coquitlam, BC
604.464.6979

Edmonton, Alberta
780.468.2588 (Manus)
780.425.5510 (Mod-U-Blast)

Hamilton, Ontario
905.527.6000 / 888.794.5665

Mississauga, Ontario
905.890.5837

Winnipeg, Manitoba
204.256.3324

800-252-7848 / WWW.ALLREDI-US.COM

Allredi™ and Marco® are registered trademarks of Allredi, LLC.
All other brand names or marks are used for identification purposes and are trademarks of their respective owners.

ALLREDI™
Literature #106M062_8/29/2022